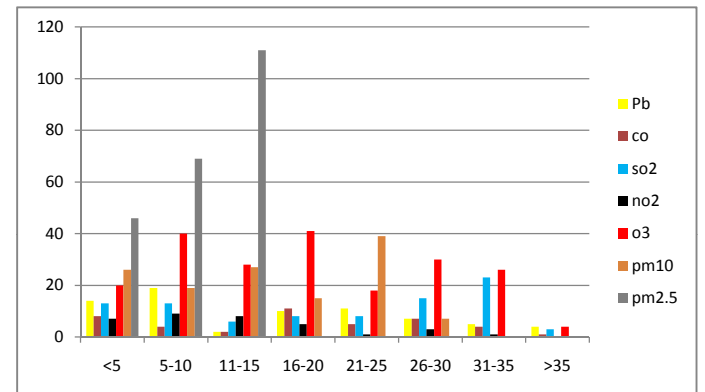


IL	Parameter De	State Cod	County Cd	Site ID	POC	Local Site	User Latitude	User Longitude	Date Sampling	Last Sampling	Length of Activity (years)
12128	Lead (Tsp) St	17	031	0001	1	VILLAGE	NULL	NULL	01-Jun-1981	28-Sep-2009	28
12128	Lead (Tsp) St	17	031	0022	2	WASHING	NULL	NULL	01-Apr-1979	28-Sep-2009	30
12128	Lead (Tsp) St	17	031	0026	1	CERMAK	NULL	NULL	01-Jan-1982	28-Sep-2009	28
12128	Lead (Tsp) St	17	031	0052	1	MAYFAIR	NULL	NULL	01-May-1982	28-Sep-2009	27
12128	Lead (Tsp) St	17	031	3103	1	IEPA TRA	NULL	NULL	01-Jan-1998	30-Jun-2009	11
12128	Lead (Tsp) St	17	031	3301	1	GRAVES	NULL	NULL	01-Feb-1979	28-Sep-2009	31
12128	Lead (Tsp) St	17	031	4201	1	NORTHB	NULL	NULL	01-Jan-2002	30-Jun-2009	7
12128	Lead (Tsp) St	17	031	4201	1	NORTHB	NULL	NULL	01-Jan-2000	30-Jun-2009	9
12128	Lead (Tsp) St	17	031	4201	1	NORTHB	NULL	NULL	01-Jan-2006	30-Jun-2009	3
12128	Lead (Tsp) St	17	031	6003	1	COOK CC	NULL	NULL	02-Dec-1984	28-Sep-2009	25
12128	Lead (Tsp) St	17	117	0002	2	IEPA TRA	NULL	NULL	01-Jan-1984	30-Jun-2009	25
12128	Lead (Tsp) St	17	119	0010	1	AIR PROT	NULL	NULL	01-Jan-1979	30-Jun-2009	30
12128	Lead (Tsp) St	17	119	3007	2	WATER F	NULL	NULL	01-Jan-1984	30-Jun-2009	25
12128	Lead (Tsp) St	17	143	0037	1	CITY OFF	NULL	NULL	01-Jan-1987	30-Jun-2009	22
12128	Lead (Tsp) St	17	163	0010	2	IEPA-RAF	NULL	NULL	01-Jan-1984	30-Jun-2009	25
12128	Lead (Tsp) St	18	035	0008	1		#####	-85.421	1-Nov-1991	31-Aug-2009	18
12128	Lead (Tsp) St	18	035	0009	2		#####	-85.416	1-Nov-1991	31-Aug-2009	18
12128	Lead (Tsp) St	18	089	0023	1		#####	-87.440	1-Jan-1997	31-Aug-2009	12
12128	Lead (Tsp) St	18	089	2008	2		#####	-87.494	1-Jul-1974	31-Aug-2009	35
12128	Lead (Tsp) St	18	097	0063	2		#####	-86.297	1-Jan-1984	31-Aug-2009	25
12128	Lead (Tsp) St	18	097	0076	1		#####	-86.290	6-May-1991	31-Aug-2009	18
12128	Lead (Tsp) St	18	097	0078	1		#####	-86.114	7-Mar-1999	31-Aug-2009	10
12128	Lead (Tsp) St	18	163	0006	1		#####	-87.567	1-Jan-1970	31-Aug-2009	39
12128	Lead (Tsp) St	26	163	0033	1	PROPER	42.3067	-83.1489	01-Jun-1990	29-Aug-2009	19
12128	Lead (Tsp) St	26	163	0033	1	PROPER	42.3067	-83.1489	03-Jan-2003	29-Aug-2009	7
12128	Lead (Tsp) St	26	163	0033	9	PROPER	42.3067	-83.1489	03-Jan-2003	29-Aug-2009	7
12128	Lead (Tsp) St	27	163	0009	1	MPC 435	44.8462	-92.9956	01-Dec-2005	29-Aug-2009	4
12128	Lead (Tsp) St	27	163	0009	1	MPC 435	44.8462	-92.9956	01-Jan-1993	29-Aug-2009	17
12128	Lead (Tsp) St	27	037	0020	1	FHR 420	44.7632	-93.0326	22-Jun-1972	29-Aug-2009	37
12128	Lead (Tsp) St	27	037	0020	1	FHR 420	44.7632	-93.0326	27-Jan-2003	29-Aug-2009	7
12128	Lead (Tsp) St	27	037	0423	1	FHR 423	44.7755	-93.063	21-Jan-2003	29-Aug-2009	7
12128	Lead (Tsp) St	27	037	0442	1	FHR 442	44.7386	-93.005	07-Aug-2003	29-Aug-2009	6
12128	Lead (Tsp) St	27	037	0443	1	FHR 443	44.7457	-93.0554	01-Jan-2008	29-Aug-2009	2
12128	Lead (Tsp) St	27	163	0446	1	Point Rd.	45.028	-92.7742	17-May-2007	29-Aug-2009	2
12128	Lead (Tsp) St	27	037	0465	1	Gopher R	44.8343	-93.1162	01-Jan-2006	29-Aug-2009	4
12128	Lead (Tsp) St	27	037	0465	2	Gopher R	44.8343	-93.1162	08-Oct-2007	29-Aug-2009	2
12128	Lead (Tsp) St	27	037	0465	2	Gopher R	44.8343	-93.1162	01-Jan-2006	29-Aug-2009	4
12128	Lead (Tsp) St	27	123	0866	1	Red Rock	44.8993	-93.0171	08-Oct-2007	29-Aug-2009	2
12128	Lead (Tsp) St	27	123	0871	1	HARDING	44.9594	-93.0359	01-Jan-2009	29-Aug-2009	1
12128	Lead (Tsp) St	27	053	0963	1	HC Ander	44.9537	-93.2582	08-May-2002	29-Aug-2009	7
12128	Lead (Tsp) St	27	053	0966	1	City of La	44.9794	-93.2661	07-Oct-2002	29-Aug-2009	7
12128	Lead (Tsp) St	27	123	1003	1	Vandalia	44.9613	-93.1902	02-Jan-2002	29-Aug-2009	8
12128	Lead (Tsp) St	27	123	1003	1	Vandalia	44.9613	-93.1902	01-Jan-1972	29-Aug-2009	38
12128	Lead (Tsp) St	27	053	1007	1	Humboldt	45.0397	-93.2987	15-Mar-2002	29-Aug-2009	7
12128	Lead (Tsp) St	27	053	1007	1	Humboldt	45.0397	-93.2987	01-Jan-1972	29-Aug-2009	38
12128	Lead (Tsp) St	27	053	2006	1	St. Louis	44.9481	-93.3432	01-Jan-1982	29-Aug-2009	28
12128	Lead (Tsp) St	27	053	2006	1	St. Louis	44.9481	-93.3432	31-Mar-2008	29-Aug-2009	1
12128	Lead (Tsp) St	27	137	7001	1	Virginia	47.5234	-92.5363	02-Jan-2002	29-Aug-2009	8
12128	Lead (Tsp) St	27	137	7555	1	Waseca F	46.7294	-92.16	02-Jan-2002	29-Aug-2009	8
12128	Lead (Tsp) St	27	137	7555	2	Waseca F	46.7294	-92.16	22-Apr-2005	29-Aug-2009	4
12128	Lead (Tsp) St	39	017	0015	2	OHIO BEL	39.4899	-84.3641	01-Jan-2004	01-Aug-2009	6
12128	Lead (Tsp) St	39	029	0019	1	COLUMB	40.6311	-80.5469	01-Apr-2000	01-Aug-2009	9
12128	Lead (Tsp) St	39	029	0019	1	COLUMB	40.6311	-80.5469	27-Oct-1992	01-Aug-2009	17
12128	Lead (Tsp) St	39	029	0020	1	EAST LIV	40.6397	-80.5239	01-Mar-2000	01-Aug-2009	9
12128	Lead (Tsp) St	39	029	0020	1	EAST LIV	40.6397	-80.5239	02-Sep-1992	01-Aug-2009	17

	lead	co	so2	no2	o3	pm10	pm2.5	
<5	5	14	8	13	7	20	26	46
5-10	10	19	4	13	9	40	19	69
11-15	15	2	2	6	8	28	27	111
16-20	20	11	11	8	5	41	15	0
21-25	25	11	5	8	1	18	39	0
26-30	30	7	7	15	3	30	7	0
31-35	35	5	4	23	1	26	0	0
>35	4	1	3	0	4	0	0	0
	72	42	89	34	207	133	226	
	39	30	63	18	147	88	111	
% > 10yrs	54%	71%	71%	53%	71%	66%	49%	



12128	Lead (Tsp) St	39	029	0022	1	La Croft E	40.635	-80.5467	01-Jan-2003	01-Aug-2009	7
12128	Lead (Tsp) St	39	035	0038	1	ST. THEC	41.4769	-81.6819	01-Jul-1992	01-Sep-2009	17
12128	Lead (Tsp) St	39	035	0042	1	F.S. NO. 4	41.4822	-81.7089	01-Feb-1979	01-Sep-2009	31
12128	Lead (Tsp) St	39	035	0049	1	FERRO C	41.4467	-81.6511	06-Oct-1987	01-Sep-2009	22
12128	Lead (Tsp) St	39	035	0050	1	FERRO C	41.4425	-81.6492	06-Oct-1987	01-Sep-2009	22
12128	Lead (Tsp) St	39	035	0061	2	OLD ASP	41.4751	-81.676	01-Aug-1994	01-Sep-2009	15
12128	Lead (Tsp) St	39	049	0025	1	WOODRC	39.9281	-82.9811	06-Jun-1993	01-Sep-2009	16
12128	Lead (Tsp) St	39	051	0001	1	NULL	41.5753	-83.9964	01-Jan-1986	01-Sep-2009	24
12128	Lead (Tsp) St	39	091	0003	1	NULL	40.3431	-83.755	01-Jul-1985	01-Sep-2009	24
12128	Lead (Tsp) St	39	091	0006	1	NULL	40.3411	-83.7578	02-Jan-1986	01-Oct-2009	24
12128	Lead (Tsp) St	39	091	0006	1	NULL	40.3411	-83.7578	01-Jul-1985	01-Oct-2009	24
12128	Lead (Tsp) St	39	091	0007	1	NULL	40.3447	-83.7544	08-Jan-1986	01-Oct-2009	24
12128	Lead (Tsp) St	39	091	0007	1	NULL	40.3447	-83.7544	01-Jul-1985	01-Oct-2009	24
12128	Lead (Tsp) St	39	091	0008	1	NULL	40.3437	-83.7598	01-Nov-2006	01-Oct-2009	3
12128	Lead (Tsp) St	39	143	0019	1	NULL	41.3056	-82.9796	01-Jan-2009	01-Sep-2009	1
12128	Lead (Tsp) St	39	167	0008	1	LOCATED	39.4336	-81.5025	01-Nov-2000	01-Sep-2009	9
12128	Lead (Tsp) St	39	167	0010	1	The Ohio	39.4137	-81.4706	01-Nov-2008	01-Aug-2009	1
42101	Carbon Mono	17	031	0063	1	CTA BUIL	NULL	NULL	25-Aug-1988	31-Oct-2009	21
42101	Carbon Mono	17	031	3103	1	IEPA TRA	NULL	NULL	01-Jan-1998	31-Oct-2009	12
42101	Carbon Mono	17	031	4002	1	COOK CC	NULL	NULL	01-Jan-1983	31-Oct-2009	27
42101	Carbon Mono	17	031	4201	1	NORTHBI	NULL	NULL	18-Apr-2007	29-Oct-2009	3
42101	Carbon Mono	17	031	6004	1	COM ED	NULL	NULL	01-Sep-1987	31-Oct-2009	22
42101	Carbon Mono	17	143	0036	1	COMMER	NULL	NULL	06-Nov-1986	31-Oct-2009	23
42101	Carbon Mono	17	163	0010	1	IEPA-RAF	NULL	NULL	01-Jan-1975	31-Oct-2009	35
42101	Carbon Mono	17	167	0008	1	FEDERAL	NULL	NULL	24-Feb-1979	31-Oct-2009	31
42101	Carbon Mono	17	201	0011	1	CITY HAL	NULL	NULL	01-Jan-1981	31-Oct-2009	29
42101	Carbon Mono	18	003	0011	1	SW CORN	NULL	NULL	01-Mar-1994	31-Oct-2009	16
42101	Carbon Mono	18	063	0002	1	Pittsboro	NULL	NULL	01-Apr-1998	31-Mar-2009	11
42101	Carbon Mono	18	063	0002	1	Pittsboro	NULL	NULL	02-Nov-2003	31-Mar-2009	5
42101	Carbon Mono	18	089	0015	1	NULL	41.6286	-87.4614	01-Mar-1984	31-Oct-2009	26
42101	Carbon Mono	18	097	0072	1	NULL	39.7681	-86.16	01-Feb-1990	31-Oct-2009	20
42101	Carbon Mono	18	097	0073	1	NULL	39.7895	-86.0608	02-Apr-1990	31-Oct-2009	20
42101	Carbon Mono	18	163	0019	1	EVANSVI	38.0065	-87.5741	01-Oct-2003	10-Sep-2009	6
42101	Carbon Mono	18	163	0022	1	NULL	37.9776	-87.5968	28-Sep-2009	31-Oct-2009	0
42101	Carbon Mono	26	081	0020	1	NULL	42.9842	-85.6714	01-Apr-2008	30-Sep-2009	1
42101	Carbon Mono	26	081	0020	1	NULL	42.9842	-85.6714	24-Apr-1980	30-Sep-2009	29
42101	Carbon Mono	26	163	0001	1	NULL	42.2286	-83.2083	01-Apr-2008	30-Sep-2009	1
42101	Carbon Mono	26	163	0001	1	NULL	42.2286	-83.2083	06-Apr-1972	30-Sep-2009	37
42101	Carbon Mono	27	137	0018	1	Torrey Bu	46.7836	-92.1025	01-Jan-1976	31-Aug-2009	34
42101	Carbon Mono	27	037	0020	1	FHR 420	44.7632	-93.0326	27-Aug-1992	31-Aug-2009	17
42101	Carbon Mono	27	123	0050	1	Lexington	44.9558	-93.1459	01-Jan-1987	31-Aug-2009	23
42101	Carbon Mono	27	037	0423	1	FHR 423	44.7755	-93.063	29-Apr-1993	31-Aug-2009	16
42101	Carbon Mono	27	053	0954	1	Arts Cente	44.981	-93.2737	12-Jul-1989	31-Aug-2009	20
42101	Carbon Mono	27	145	3048	1	St. Cloud	45.5612	-94.1553	23-Sep-1992	31-Aug-2009	17
42101	Carbon Mono	39	009	0004	1	NULL	39.308	-82.1182	01-Jan-2009	30-Sep-2009	1
42101	Carbon Mono	39	035	0051	1	GALLERI	41.5044	-81.6903	01-Oct-1991	30-Sep-2009	18
42101	Carbon Mono	39	035	0053	1	STAR BA	41.4417	-81.7039	01-Jun-1992	30-Sep-2009	17
42101	Carbon Mono	39	035	0070	1	CORLETT	41.4569	-81.5922	01-May-2004	30-Sep-2009	5
42101	Carbon Mono	39	035	0070	1	CORLETT	41.4569	-81.5922	12-Aug-2009	30-Sep-2009	0
42101	Carbon Mono	39	049	0005	1	MORSE F	40.06	-82.9769	01-Feb-1979	30-Sep-2009	31
42101	Carbon Mono	39	061	0021	1	FEDERAL	39.1019	-84.5097	01-Feb-1981	30-Sep-2009	29
42101	Carbon Mono	39	085	0006	1	NULL	41.6667	-81.3392	26-Aug-1992	30-Sep-2009	17
42101	Carbon Mono	39	103	0004	1	NULL	41.0604	-81.9239	01-Sep-2009	30-Sep-2009	0
42101	Carbon Mono	39	113	0028	1	NULL	39.7872	-84.2261	01-Jan-1981	30-Nov-2009	29
42101	Carbon Mono	39	113	0034	1	NULL	39.7578	-84.1917	09-Nov-2004	30-Nov-2009	5
42101	Carbon Mono	39	151	0020	1	CANTON	40.8006	-81.3733	27-Jan-1993	30-Sep-2009	17
42101	Carbon Mono	39	153	0020	1	NULL	41.1061	-81.5039	08-Jan-1980	30-Sep-2009	30
42101	Carbon Mono	39	153	0022	1	1ST FLOC	41.0803	-81.5164	15-Oct-1993	30-Sep-2009	16
42101	Carbon Mono	55	027	0007	1	MAYVILL	43.435	-88.5278	01-Apr-2007	31-Jul-2009	2

42401	Sulfur Dioxide	17	031	0050	1	SE POLI	NULL	NULL	05-Mar-1981	31-Oct-2009	29
42401	Sulfur Dioxide	17	031	0063	1	CTA BUIL	NULL	NULL	15-Feb-1995	31-Oct-2009	15
42401	Sulfur Dioxide	17	031	0076	1	COM ED	NULL	NULL	01-Jan-2004	31-Oct-2009	6
42401	Sulfur Dioxide	17	031	1601	1	COOK CC	NULL	NULL	01-Jan-1982	31-Oct-2009	28
42401	Sulfur Dioxide	17	031	4002	1	COOK CC	NULL	NULL	01-Jan-1983	31-Oct-2009	27
42401	Sulfur Dioxide	17	031	4201	1	NORTHB	NULL	NULL	01-Jan-2004	09-Aug-2009	6
42401	Sulfur Dioxide	17	031	4201	2	NORTHB	NULL	NULL	01-Jan-2004	31-Oct-2009	6
42401	Sulfur Dioxide	17	099	0007	1	IEPA TRA	NULL	NULL	01-Jan-2006	31-Oct-2009	4
42401	Sulfur Dioxide	17	115	0013	1	IEPA TRA	NULL	NULL	01-Jan-1983	31-Oct-2009	27
42401	Sulfur Dioxide	17	117	0002	1	IEPA TRA	NULL	NULL	01-Jul-1981	31-Oct-2009	28
42401	Sulfur Dioxide	17	119	1010	1	SOUTH R	NULL	NULL	03-Jan-1986	31-Oct-2009	24
42401	Sulfur Dioxide	17	119	3007	3	WATER F	NULL	NULL	01-Jan-1975	31-Oct-2009	35
42401	Sulfur Dioxide	17	143	0024	2	FIRESTA	NULL	NULL	09-Jun-1978	31-Oct-2009	31
42401	Sulfur Dioxide	17	157	0001	1	IEPA TRA	NULL	NULL	25-Aug-1988	31-Oct-2009	21
42401	Sulfur Dioxide	17	163	0010	3	IEPA-RAF	NULL	NULL	01-Jan-1979	31-Oct-2009	31
42401	Sulfur Dioxide	17	167	0006	1	SEWAGE	NULL	NULL	24-Jan-1978	31-Oct-2009	32
42401	Sulfur Dioxide	17	179	0004	2	FIRESTA	NULL	NULL	26-May-1978	31-Oct-2009	31
42401	Sulfur Dioxide	17	185	0001	1	NULL	38.3972	-87.7736	01-Jan-1979	30-Jun-2009	30
42401	Sulfur Dioxide	17	185	1001	1	NULL	38.3694	-87.8344	01-Jan-1979	30-Jun-2009	30
42401	Sulfur Dioxide	17	197	0013	1	WATER F	NULL	NULL	01-Jan-1987	31-Oct-2009	23
42401	Sulfur Dioxide	18	027	0002	1	NULL	38.5728	-87.2147	01-Jan-1978	30-Jun-2009	31
42401	Sulfur Dioxide	18	043	0004	1	NULL	NULL	NULL	01-Jan-1982	30-Jun-2009	27
42401	Sulfur Dioxide	18	043	0007	1	LOCATED	NULL	NULL	01-Jul-1993	30-Jun-2009	16
42401	Sulfur Dioxide	18	043	1004	1	NULL	38.3081	-85.8342	01-Nov-1976	30-Sep-2009	33
42401	Sulfur Dioxide	18	045	0001	1	NULL	39.9642	-87.4214	01-Jan-1980	30-Jun-2009	29
42401	Sulfur Dioxide	18	051	0001	2	NULL	38.3614	-87.7486	01-Jan-1979	30-Jun-2009	30
42401	Sulfur Dioxide	18	051	0002	1	NULL	38.3928	-87.7483	01-Jan-1981	30-Jun-2009	28
42401	Sulfur Dioxide	18	063	0002	1	Pittsboro	NULL	NULL	02-Nov-2003	31-Mar-2009	5
42401	Sulfur Dioxide	18	063	0002	1	Pittsboro	NULL	NULL	01-Apr-1998	31-Mar-2009	11
42401	Sulfur Dioxide	18	073	0002	1	NULL	41.1879	-87.0536	01-Dec-1975	30-Jun-2009	34
42401	Sulfur Dioxide	18	089	0022	1	LOCATED	41.6067	-87.3047	12-Jun-1997	30-Sep-2009	12
42401	Sulfur Dioxide	18	089	2008	1	HAMMON	41.6394	-87.4936	01-Aug-1975	30-Sep-2009	34
42401	Sulfur Dioxide	18	091	0005	1	NULL	41.717	-86.9077	01-Apr-1976	30-Jun-2009	33
42401	Sulfur Dioxide	18	097	0057	1	NULL	39.749	-86.1863	04-Mar-1982	30-Sep-2009	28
42401	Sulfur Dioxide	18	097	0073	1	NULL	39.7895	-86.0608	02-Apr-1990	30-Sep-2009	19
42401	Sulfur Dioxide	18	109	1001	1	NULL	39.515	-86.3917	01-Jun-2004	30-Jun-2009	5
42401	Sulfur Dioxide	18	109	1001	1	NULL	39.515	-86.3917	01-Jan-1978	30-Jun-2009	31
42401	Sulfur Dioxide	18	125	0005	1	PETERSE	NULL	NULL	20-Nov-1995	30-Jun-2009	14
42401	Sulfur Dioxide	18	127	0011	1	NULL	41.6341	-87.1015	01-Jun-1976	30-Jun-2009	33
42401	Sulfur Dioxide	18	163	0012	1	NULL	38.0217	-87.5694	01-Oct-1982	30-Jun-2009	27
42401	Sulfur Dioxide	18	163	0021	1	NULL	38.0132	-87.5779	08-Jul-2009	30-Sep-2009	0
42401	Sulfur Dioxide	18	163	1002	1	NULL	37.9025	-87.6714	01-Jan-1979	30-Jun-2009	30
42401	Sulfur Dioxide	18	167	0018	2	TERRE H	39.4861	-87.4014	01-Jul-1983	30-Sep-2009	26
42401	Sulfur Dioxide	18	167	1014	1	NULL	39.5147	-87.4078	01-Oct-1982	30-Jun-2009	27
42401	Sulfur Dioxide	18	173	0002	1	NULL	37.9375	-87.3142	01-Jul-1977	30-Jun-2009	32
42401	Sulfur Dioxide	18	177	0006	1	NULL	39.8122	-84.89	01-Jan-1976	30-Sep-2009	34
42401	Sulfur Dioxide	26	081	0020	2	NULL	42.9842	-85.6714	01-Apr-2008	30-Sep-2009	1
42401	Sulfur Dioxide	26	163	0001	1	NULL	42.2286	-83.2083	01-Jan-1971	30-Sep-2009	39
42401	Sulfur Dioxide	26	163	0001	1	NULL	42.2286	-83.2083	01-Apr-2008	30-Sep-2009	1
42401	Sulfur Dioxide	26	163	0015	1	NULL	42.3028	-83.1067	01-Jan-1971	30-Sep-2009	39
42401	Sulfur Dioxide	27	037	0020	1	FHR 420	44.7632	-93.0326	14-Dec-1972	31-Aug-2009	37
42401	Sulfur Dioxide	27	037	0423	1	FHR 423	44.7755	-93.063	01-Jan-1991	31-Aug-2009	19
42401	Sulfur Dioxide	27	163	0436	1	MPC 436	44.8474	-92.9954	27-Feb-1989	31-Aug-2009	21
42401	Sulfur Dioxide	27	037	0442	1	FHR 442	44.7386	-93.005	30-May-2000	31-Aug-2009	9
42401	Sulfur Dioxide	27	037	0443	1	FHR 443	44.7457	-93.0554	01-Jan-2008	31-Aug-2009	2
42401	Sulfur Dioxide	27	053	0954	1	Arts Cente	44.981	-93.2737	26-Sep-1989	31-Aug-2009	20
42401	Sulfur Dioxide	39	001	0001	1	NULL	38.795	-83.5353	01-Nov-1989	30-Sep-2009	20
42401	Sulfur Dioxide	39	003	0002	1	NULL	40.7722	-84.0519	01-Jan-1984	09-Jun-2009	25
42401	Sulfur Dioxide	39	003	0009	1	NULL	40.7712	-84.0528	10-Jun-2009	30-Sep-2009	0

42401	Sulfur Dioxide	39	007	1001	1	NULL	41.9594	-80.5725	11-Jun-1977	30-Sep-2009	32
42401	Sulfur Dioxide	39	009	0004	1	NULL	39.308	-82.1182	01-Mar-2004	30-Sep-2009	6
42401	Sulfur Dioxide	39	013	3002	2	NULL	39.9681	-80.7475	16-Nov-1999	30-Sep-2009	10
42401	Sulfur Dioxide	39	017	1004	1	NULL	39.53	-84.3925	01-Jan-1976	30-Sep-2009	34
42401	Sulfur Dioxide	39	023	0003	1	NULL	39.8556	-83.9975	14-Aug-1985	30-Nov-2009	24
42401	Sulfur Dioxide	39	029	0022	1	La Croft E	40.635	-80.5467	17-Jan-2001	30-Sep-2009	9
42401	Sulfur Dioxide	39	035	0038	2	ST. THEC	41.4769	-81.6819	01-Jan-1976	30-Sep-2009	34
42401	Sulfur Dioxide	39	035	0045	1	F.S. NO.	41.4717	-81.6572	01-Jan-1985	30-Sep-2009	25
42401	Sulfur Dioxide	39	035	0060	1	GT CRAIG	41.494	-81.6785	08-Jan-1993	30-Sep-2009	17
42401	Sulfur Dioxide	39	035	0060	1	GT CRAIG	41.494	-81.6785	01-Aug-2009	30-Sep-2009	0
42401	Sulfur Dioxide	39	035	0065	1	LOCATED	41.4464	-81.6619	03-Jul-1997	30-Sep-2009	12
42401	Sulfur Dioxide	39	049	0034	1	STATE FA	40.0025	-82.9944	13-Jul-1992	30-Jun-2009	17
42401	Sulfur Dioxide	39	081	0017	1	NULL	40.3661	-80.615	01-Nov-2003	30-Sep-2009	6
42401	Sulfur Dioxide	39	085	0003	1	NULL	41.6731	-81.4225	01-Jan-1985	30-Sep-2009	25
42401	Sulfur Dioxide	39	085	0007	1	NULL	41.7268	-81.2422	01-Jan-2009	30-Sep-2009	1
42401	Sulfur Dioxide	39	087	0006	2	NULL	38.5203	-82.6667	01-Oct-1997	30-Sep-2009	12
42401	Sulfur Dioxide	39	099	0013	1	SW CORN	41.0961	-80.6586	01-Jan-2000	30-Sep-2009	10
42401	Sulfur Dioxide	39	103	0004	1	NULL	41.0604	-81.9239	01-Sep-2009	30-Sep-2009	0
42401	Sulfur Dioxide	39	105	1001	1	NULL	39.0378	-82.0456	26-Apr-1976	30-Sep-2009	33
42401	Sulfur Dioxide	39	115	0004	1	NULL	39.6342	-81.67	12-Jan-2006	30-Sep-2009	4
42401	Sulfur Dioxide	39	145	0013	1	NULL	38.7542	-82.9175	01-Aug-1988	30-Sep-2009	21
42401	Sulfur Dioxide	39	145	0020	1	NULL	38.609	-82.8229	20-Nov-2004	30-Sep-2009	5
42401	Sulfur Dioxide	39	145	0022	1	NULL	38.588	-82.835	20-Nov-2004	30-Sep-2009	5
42401	Sulfur Dioxide	39	153	0017	1	NULL	41.0633	-81.4686	01-Oct-1978	30-Sep-2009	31
42401	Sulfur Dioxide	39	153	0022	1	1ST FLOC	41.0803	-81.5164	15-Oct-1993	30-Sep-2009	16
42401	Sulfur Dioxide	39	157	0006	1	NULL	40.5114	-81.6391	01-Aug-2003	30-Sep-2009	6
42401	Sulfur Dioxide	55	009	0005	1	NULL	44.507	-87.993	24-Jul-1980	31-Jul-2009	29
42401	Sulfur Dioxide	55	027	0007	1	MAYVILL	43.435	-88.5278	01-Apr-2007	31-Jul-2009	2
42401	Sulfur Dioxide	55	041	0007	1	NULL	45.565	-88.8086	07-Jan-2004	31-Jul-2009	6
42401	Sulfur Dioxide	55	085	0996	1	NULL	45.6453	-89.4125	14-Apr-1981	31-Jul-2009	28
42602	Nitrogen Diox	17	031	0063	1	CTA BUIL	NULL	NULL	30-Jun-1988	31-Oct-2009	21
42602	Nitrogen Diox	17	031	0072	1	JARDINE	NULL	NULL	05-May-1995	30-Sep-2009	14
42602	Nitrogen Diox	17	031	0076	1	COM ED	NULL	NULL	01-Jan-2002	31-Oct-2009	8
42602	Nitrogen Diox	17	031	3103	1	IEPA TRA	NULL	NULL	01-Jan-1998	31-Oct-2009	12
42602	Nitrogen Diox	17	031	4002	1	COOK CC	NULL	NULL	01-Jan-1983	31-Oct-2009	27
42602	Nitrogen Diox	17	031	4201	2	NORTHB	NULL	NULL	01-Jun-2000	09-Aug-2009	9
42602	Nitrogen Diox	17	031	4201	1	NORTHB	NULL	NULL	15-May-1997	31-Oct-2009	12
42602	Nitrogen Diox	17	163	0010	2	IEPA-RAF	NULL	NULL	01-Jan-1981	31-Oct-2009	29
42602	Nitrogen Diox	18	063	0002	1	Pittsboro	NULL	NULL	01-Apr-1998	31-Mar-2009	11
42602	Nitrogen Diox	18	063	0002	1	Pittsboro	NULL	NULL	02-Nov-2003	31-Mar-2009	5
42602	Nitrogen Diox	18	089	0022	1	LOCATED	41.6067	-87.3047	27-Jun-1995	30-Sep-2009	14
42602	Nitrogen Diox	18	097	0073	1	NULL	39.7895	-86.0608	02-Apr-1990	31-Oct-2009	20
42602	Nitrogen Diox	18	141	0015	1	SOUTH B	41.6967	-86.2147	01-Jun-2006	30-Sep-2009	3
42602	Nitrogen Diox	18	163	0012	1	NULL	38.0217	-87.5694	01-Mar-1991	30-Jun-2009	18
42602	Nitrogen Diox	18	163	0021	1	NULL	38.0132	-87.5779	08-Jul-2009	31-Oct-2009	0
42602	Nitrogen Diox	26	163	0019	2	NULL	42.4308	-83.0003	01-Dec-1990	30-Sep-2009	19
42602	Nitrogen Diox	27	037	0020	1	FHR 420	44.7632	-93.0326	08-Dec-1974	31-Aug-2009	35
42602	Nitrogen Diox	27	037	0423	1	FHR 423	44.7755	-93.063	29-Apr-1993	31-Aug-2009	16
42602	Nitrogen Diox	27	003	1002	1	Anoka Air	45.1377	-93.2077	01-Jan-2003	31-Aug-2009	7
42602	Nitrogen Diox	27	003	1002	1	Anoka Air	45.1377	-93.2077	01-Jan-1980	31-Aug-2009	30
42602	Nitrogen Diox	27	017	7416	1	Cloquet	46.7053	-92.5238	01-Apr-2009	31-Aug-2009	0
42602	Nitrogen Diox	27	017	7416	1	Cloquet	46.7053	-92.5238	01-Aug-2002	31-Aug-2009	7
42602	Nitrogen Diox	39	009	0004	1	NULL	39.308	-82.1182	01-Mar-2004	30-Sep-2009	6
42602	Nitrogen Diox	39	035	0060	1	GT CRAIG	41.494	-81.6785	01-Aug-2009	30-Sep-2009	0
42602	Nitrogen Diox	39	035	0060	1	GT CRAIG	41.494	-81.6785	10-Jan-1993	30-Sep-2009	17
42602	Nitrogen Diox	39	061	0040	1	HC-DOES	39.1286	-84.5042	01-Apr-1999	30-Sep-2009	10
42602	Nitrogen Diox	39	103	0004	1	NULL	41.0604	-81.9239	01-Sep-2009	30-Sep-2009	0
42602	Nitrogen Diox	55	071	0007	1	MANITOV	44.1386	-87.6161	28-Apr-1995	31-Jul-2009	14
42602	Nitrogen Diox	55	071	0007	1	MANITOV	44.1386	-87.6161	01-Jun-2004	31-Jul-2009	5

42602	Nitrogen Diox	55	071	0007	1	MANITOV	44.1386	-87.6161	30-May-2008	31-Jul-2009	1
42602	Nitrogen Diox	55	071	0007	1	MANITOV	44.1386	-87.6161	30-May-2009	31-Jul-2009	0
42602	Nitrogen Diox	55	079	0026	1	DNR SER	43.0611	-87.9125	24-Jun-1999	31-Jul-2009	10
42602	Nitrogen Diox	55	079	0026	1	DNR SER	43.0611	-87.9125	23-May-2003	31-Jul-2009	6
42602	Nitrogen Diox	55	079	0026	1	DNR SER	43.0611	-87.9125	01-Jul-2001	31-Jul-2009	8
44201	Ozone	17	001	0007	1	JOHN WC	NULL	NULL	15-Mar-2007	31-Oct-2009	3
44201	Ozone	17	019	0004	1	BOOKER	NULL	NULL	01-Jan-1979	31-Oct-2009	31
44201	Ozone	17	023	0001	1	VIGO CO	39.2109	-87.6684	01-Apr-2001	31-Oct-2009	9
44201	Ozone	17	031	0001	1	VILLAGE	NULL	NULL	01-Jun-1988	31-Oct-2009	21
44201	Ozone	17	031	0032	1	SOUTH V	NULL	NULL	01-Apr-1987	31-Oct-2009	23
44201	Ozone	17	031	0042	2	SEARS T	NULL	NULL	01-Jan-1989	23-Oct-2009	21
44201	Ozone	17	031	0064	1	UNIVERS	NULL	NULL	01-Jul-1989	31-Oct-2009	20
44201	Ozone	17	031	0072	1	JARDINE	NULL	NULL	14-Apr-1995	31-Oct-2009	15
44201	Ozone	17	031	0076	1	COM ED	NULL	NULL	01-Jan-2004	31-Oct-2009	6
44201	Ozone	17	031	1003	2	TAFT HS	NULL	NULL	01-Jan-1979	31-Oct-2009	31
44201	Ozone	17	031	1601	1	COOK CC	NULL	NULL	01-Jan-1983	31-Oct-2009	27
44201	Ozone	17	031	4002	1	COOK CC	NULL	NULL	01-Jan-1983	31-Oct-2009	27
44201	Ozone	17	031	4007	1	REGIONA	NULL	NULL	01-Jan-2002	31-Oct-2009	8
44201	Ozone	17	031	4201	2	NORTHB	NULL	NULL	01-Jun-2000	09-Aug-2009	9
44201	Ozone	17	031	4201	1	NORTHB	NULL	NULL	20-Mar-1997	31-Oct-2009	13
44201	Ozone	17	031	7002	1	WATER F	NULL	NULL	01-Aug-1977	31-Oct-2009	32
44201	Ozone	17	043	6001	1	MORTON	NULL	NULL	01-Jan-1984	31-Oct-2009	26
44201	Ozone	17	049	1001	2	CENTRAL	NULL	NULL	01-Jan-1982	31-Oct-2009	28
44201	Ozone	17	065	0002	1	TEN MILE	NULL	NULL	01-Apr-2005	31-Oct-2009	5
44201	Ozone	17	083	1001	1	ILLINI JR	NULL	NULL	05-Apr-1988	31-Oct-2009	22
44201	Ozone	17	089	0005	1	LARSEN	NULL	NULL	01-Dec-1980	31-Oct-2009	29
44201	Ozone	17	097	1002	1	NORTH F	NULL	NULL	01-Jul-1976	31-Oct-2009	33
44201	Ozone	17	097	1007	1	CAMP LO	NULL	NULL	14-Apr-1994	31-Oct-2009	16
44201	Ozone	17	111	0001	1	CARY GR	NULL	NULL	25-Jun-1980	31-Oct-2009	29
44201	Ozone	17	113	2003	1	ISU HARF	NULL	NULL	01-Mar-2001	31-Oct-2009	9
44201	Ozone	17	115	0013	1	IEPA TRA	NULL	NULL	01-Jan-1983	31-Oct-2009	27
44201	Ozone	17	117	0002	1	IEPA TRA	NULL	NULL	01-Jul-1981	31-Oct-2009	28
44201	Ozone	17	119	0008	1	CLARA B	NULL	NULL	01-Jan-1984	31-Oct-2009	26
44201	Ozone	17	119	1009	1	SOUTHW	NULL	NULL	01-Jan-1983	31-Oct-2009	27
44201	Ozone	17	119	3007	1	WATER F	NULL	NULL	01-Jan-1975	31-Oct-2009	35
44201	Ozone	17	143	0024	1	FIRESTA	NULL	NULL	01-Jan-1974	31-Oct-2009	36
44201	Ozone	17	143	1001	1	PEORIA F	NULL	NULL	01-May-1979	31-Oct-2009	31
44201	Ozone	17	157	0001	1	IEPA TRA	NULL	NULL	30-Mar-1990	31-Oct-2009	20
44201	Ozone	17	161	3002	1	ROCK ISL	NULL	NULL	08-Feb-2001	31-Oct-2009	9
44201	Ozone	17	163	0010	2	IEPA-RAF	NULL	NULL	01-Jan-1979	31-Oct-2009	31
44201	Ozone	17	167	0010	1	IDPH WA	NULL	NULL	22-Jul-1980	31-Oct-2009	29
44201	Ozone	17	197	1011	1	COM ED	NULL	NULL	01-Apr-1995	31-Oct-2009	15
44201	Ozone	17	201	2001	1	MAPLE E	NULL	NULL	01-Jul-1979	30-Oct-2009	30
44201	Ozone	18	003	0002	1	NULL	41.2217	-85.0172	01-Apr-1986	30-Sep-2009	23
44201	Ozone	18	003	0004	1	NULL	41.0947	-85.1019	01-Jul-1979	30-Sep-2009	30
44201	Ozone	18	011	0001	1	ELEMEN	39.9975	-86.3952	01-Apr-2000	30-Sep-2009	9
44201	Ozone	18	015	0002	1	LOCATE	40.5406	-86.5531	01-Apr-2001	30-Sep-2009	8
44201	Ozone	18	019	0008	1	NULL	38.3938	-85.6642	01-May-2007	31-Oct-2009	3
44201	Ozone	18	035	0010	1	LOCATE	40.3	-85.2456	01-Apr-2001	30-Sep-2009	8
44201	Ozone	18	039	0007	1	NULL	41.7181	-85.8306	01-Apr-2002	30-Sep-2009	7
44201	Ozone	18	043	1004	1	NULL	38.3081	-85.8342	01-Jan-1977	31-Oct-2009	33
44201	Ozone	18	055	0001	1	LOCATE	38.9856	-86.9901	03-Apr-2000	30-Sep-2009	9
44201	Ozone	18	057	0005	1	NULL	40.0652	-86.0081	19-Apr-2007	30-Sep-2009	2
44201	Ozone	18	059	0003	1	NULL	39.935	-85.8405	01-Jun-1987	30-Sep-2009	22
44201	Ozone	18	063	0004	1	AVON SC	39.759	-86.3971	01-Apr-2000	30-Sep-2009	9
44201	Ozone	18	069	0002	1	WEST EN	40.9606	-85.38	14-Apr-2000	30-Sep-2009	9
44201	Ozone	18	071	0001	1	LOCATE	38.9208	-86.0805	04-Apr-2000	30-Sep-2009	9
44201	Ozone	18	081	0002	1	ELEMEN	39.4172	-86.1524	01-Apr-1997	30-Sep-2009	12
44201	Ozone	18	089	0022	1	LOCATE	41.6067	-87.3047	22-Jun-1995	30-Sep-2009	14

44201	Ozone	18	089	0030	1	NULL	41.6814	-87.4947	01-Apr-2004	30-Sep-2009	5
44201	Ozone	18	089	2008	1	HAMMON	41.6394	-87.4936	01-Jan-1976	30-Sep-2009	34
44201	Ozone	18	091	0005	1	NULL	41.717	-86.9077	24-May-1990	30-Sep-2009	19
44201	Ozone	18	091	0010	1	LAPORTE	41.6292	-86.6847	07-May-1997	30-Sep-2009	12
44201	Ozone	18	095	0010	1	SCHOOL	40.0025	-85.6569	05-Apr-1993	30-Sep-2009	16
44201	Ozone	18	097	0050	1	NULL	39.859	-86.0213	01-Dec-1979	30-Sep-2009	30
44201	Ozone	18	097	0057	1	NULL	39.749	-86.1863	01-Mar-1982	30-Sep-2009	28
44201	Ozone	18	097	0073	1	NULL	39.7895	-86.0608	02-Apr-1990	30-Sep-2009	19
44201	Ozone	18	097	0078	1	IN PARKI	39.8111	-86.1145	01-Apr-2009	31-Oct-2009	1
44201	Ozone	18	109	0005	1	AT HIGH	39.5756	-86.4779	01-Apr-1997	30-Sep-2009	12
44201	Ozone	18	123	0009	1	NULL	38.1131	-86.6036	01-Apr-2004	30-Sep-2009	5
44201	Ozone	18	127	0024	1	NULL	41.6175	-87.1992	01-Nov-1983	30-Sep-2009	26
44201	Ozone	18	127	0026	1	VALPARA	41.5103	-87.0386	01-Apr-1998	30-Sep-2009	11
44201	Ozone	18	129	0003	1	ST. PHILI	38.0053	-87.7183	01-Jul-1996	30-Sep-2009	13
44201	Ozone	18	141	0010	1	NULL	41.5517	-86.3706	24-Apr-1991	30-Sep-2009	18
44201	Ozone	18	141	0015	1	SOUTH B	41.6967	-86.2147	01-Jun-2006	30-Sep-2009	3
44201	Ozone	18	141	1007	1	NULL	41.7426	-86.1106	01-Jun-1979	30-Sep-2009	30
44201	Ozone	18	145	0001	1	TRITON H	39.6113	-85.8736	01-Apr-2000	30-Sep-2009	9
44201	Ozone	18	163	0012	1	NULL	38.0217	-87.5694	01-Oct-1982	08-Jul-2009	27
44201	Ozone	18	163	0013	1	NULL	38.1139	-87.5369	01-May-1980	30-Sep-2009	29
44201	Ozone	18	163	0021	1	NULL	38.0132	-87.5779	08-Jul-2009	30-Sep-2009	0
44201	Ozone	18	167	0018	1	TERRE H	39.4861	-87.4014	01-Jul-1983	30-Sep-2009	26
44201	Ozone	18	167	0024	1	SITE LOC	39.5606	-87.3131	01-Apr-2001	30-Sep-2009	8
44201	Ozone	18	173	0008	1	NULL	38.0519	-87.2783	16-Apr-1991	30-Sep-2009	18
44201	Ozone	18	173	0009	1	NULL	38.1944	-87.3414	02-May-1991	30-Sep-2009	18
44201	Ozone	18	173	0011	1	NULL	37.9545	-87.3219	20-Apr-2005	30-Sep-2009	4
44201	Ozone	26	005	0003	1	NULL	42.7678	-86.1486	25-Aug-1992	30-Sep-2009	17
44201	Ozone	26	019	0003	1	NULL	44.6169	-86.1094	28-Jul-1992	30-Sep-2009	17
44201	Ozone	26	021	0014	1	NULL	42.1978	-86.3097	03-Aug-1992	30-Sep-2009	17
44201	Ozone	26	027	0003	2	NULL	41.8956	-86.0017	16-May-1991	30-Sep-2009	18
44201	Ozone	26	027	0003	2	NULL	41.8956	-86.0017	01-Apr-2005	30-Sep-2009	4
44201	Ozone	26	037	0001	2	ROSE LA	42.7983	-84.3939	07-Jun-1979	30-Sep-2009	30
44201	Ozone	26	049	0021	1	NULL	43.0472	-83.6703	16-Jun-1992	30-Sep-2009	17
44201	Ozone	26	049	2001	1	NULL	43.1683	-83.4617	13-May-1980	30-Sep-2009	29
44201	Ozone	26	063	0007	1	RURAL T	43.8364	-82.6431	01-Apr-1994	30-Sep-2009	15
44201	Ozone	26	065	0012	2	NULL	42.7386	-84.5347	05-Sep-1980	30-Sep-2009	29
44201	Ozone	26	077	0008	1	KALAMAZ	42.2781	-85.5419	01-Apr-1997	30-Sep-2009	12
44201	Ozone	26	081	0020	1	NULL	42.9842	-85.6714	24-Apr-1980	30-Sep-2009	29
44201	Ozone	26	081	0022	1	APPROXI	43.1767	-85.4167	01-Apr-1999	30-Sep-2009	10
44201	Ozone	26	091	0007	1	6792 RAI	41.9956	-83.9467	06-Jul-1993	30-Sep-2009	16
44201	Ozone	26	099	0009	1	NULL	42.7314	-82.7936	14-Jul-1980	30-Sep-2009	29
44201	Ozone	26	099	1003	1	NULL	42.5133	-83.0061	01-Jan-1977	30-Sep-2009	33
44201	Ozone	26	101	0922	1	NULL	44.307	-86.2427	01-Apr-2006	30-Sep-2009	3
44201	Ozone	26	105	0007	1	LOCATEE	43.9533	-86.2944	01-Apr-1998	30-Sep-2009	11
44201	Ozone	26	113	0001	1	LOCATEE	44.3106	-84.8919	01-Apr-1998	30-Sep-2009	11
44201	Ozone	26	121	0039	1	NULL	43.2781	-86.3111	01-May-1991	30-Sep-2009	18
44201	Ozone	26	125	0001	2	NULL	42.4631	-83.1833	09-Jan-1981	30-Sep-2009	29
44201	Ozone	26	139	0005	1	NULL	42.8944	-85.8528	01-Apr-1989	30-Sep-2009	20
44201	Ozone	26	147	0005	1	NULL	42.9533	-82.4564	28-Feb-1981	30-Sep-2009	29
44201	Ozone	26	153	0001	1	NULL	46.2889	-85.9503	15-Jan-2001	30-Sep-2009	9
44201	Ozone	26	153	0001	1	NULL	46.2889	-85.9503	15-Jan-2002	30-Sep-2009	8
44201	Ozone	26	161	0008	1	TOWNER	42.2406	-83.5997	01-Apr-2000	30-Sep-2009	9
44201	Ozone	26	163	0001	2	NULL	42.2286	-83.2083	01-Jan-1980	30-Sep-2009	30
44201	Ozone	26	163	0019	2	NULL	42.4308	-83.0003	11-Apr-1977	30-Sep-2009	32
44201	Ozone	27	075	0005	1	Fernberg	47.9486	-91.4956	01-Jan-1977	31-Aug-2009	33
44201	Ozone	27	137	0034	1	VOYAGEI	48.4128	-92.8292	01-Jul-1996	30-Sep-2009	13
44201	Ozone	27	139	0505	1	Shakopee	44.7914	-93.5125	14-Jun-2002	31-Aug-2009	7
44201	Ozone	27	003	1001	1	Cedar Cre	45.4018	-93.2031	01-May-1979	31-Aug-2009	30
44201	Ozone	27	003	1002	1	Anoka Air	45.1377	-93.2077	01-May-1979	31-Aug-2009	30

44201	Ozone	27	005	2013	1	Detroit La	46.8518	-95.8463	01-Apr-2005	31-Aug-2009	4
44201	Ozone	27	095	3051	1	Mille Lacs	46.2053	-93.7595	22-Apr-1999	31-Aug-2009	10
44201	Ozone	27	145	3052	1	Talahi Sci	45.5498	-94.1335	14-Apr-2003	31-Aug-2009	6
44201	Ozone	27	171	3201	1	St. Michael	45.2092	-93.6692	14-Apr-2003	31-Aug-2009	6
44201	Ozone	27	035	3204	1	Brainerd A	46.3967	-94.1303	01-Apr-2005	31-Aug-2009	4
44201	Ozone	27	083	4210	1	Marshall A	44.4438	-95.8179	05-May-2005	31-Aug-2009	4
44201	Ozone	27	109	5008	1	Ben Frank	43.9969	-92.4504	25-Mar-2003	31-Aug-2009	6
44201	Ozone	27	049	5302	1	Stanton A	44.4738	-93.0126	12-May-2003	31-Aug-2009	6
44201	Ozone	27	163	6015	1	Washingtc	45.1173	-92.8553	04-Sep-1997	31-Aug-2009	12
44201	Ozone	27	017	7416	1	Cloquet	46.7053	-92.5238	01-Jun-2001	31-Jul-2009	8
44201	Ozone	27	137	7550	1	WDSE	46.8183	-92.0894	31-Jul-2003	31-Aug-2009	6
44201	Ozone	39	003	0002	1	NULL	40.7722	-84.0519	01-Jan-1982	09-Jun-2009	27
44201	Ozone	39	003	0009	1	NULL	40.7712	-84.0528	10-Jun-2009	30-Sep-2009	0
44201	Ozone	39	007	1001	1	NULL	41.9594	-80.5725	01-Aug-1976	30-Sep-2009	33
44201	Ozone	39	009	0004	1	NULL	39.308	-82.1182	01-Mar-2004	30-Sep-2009	6
44201	Ozone	39	017	0004	1	HAMILTO	39.3833	-84.5442	01-May-1982	31-Oct-2009	28
44201	Ozone	39	017	1004	3	NULL	39.53	-84.3925	06-Jan-1975	31-Oct-2009	35
44201	Ozone	39	023	0001	1	NULL	40.0008	-83.8044	14-Jun-1977	31-Oct-2009	32
44201	Ozone	39	023	0003	1	NULL	39.8556	-83.9975	14-Aug-1985	31-Oct-2009	24
44201	Ozone	39	025	0022	1	CLERMO	39.0823	-84.1442	01-Apr-2001	31-Oct-2009	9
44201	Ozone	39	027	1002	1	MONITOF	39.43	-83.7886	01-Apr-1993	31-Oct-2009	17
44201	Ozone	39	035	0034	1	6TH DIST	41.555	-81.575	01-Dec-1972	30-Sep-2009	37
44201	Ozone	39	035	0064	1	BEREA B	41.3617	-81.8647	01-Apr-1994	30-Sep-2009	15
44201	Ozone	39	035	5002	1	MAYFIEL	41.5367	-81.4592	12-Apr-1985	30-Sep-2009	24
44201	Ozone	39	041	0002	1	OZONE M	40.3566	-83.064	01-Apr-1997	30-Sep-2009	12
44201	Ozone	39	049	0029	1	NEW ALA	40.0867	-82.8156	01-Apr-2001	30-Sep-2009	8
44201	Ozone	39	049	0037	1	FRANKLI	39.9651	-82.9553	01-Apr-2001	30-Sep-2009	8
44201	Ozone	39	049	0081	1	MAPLE C	40.0878	-82.9597	01-Jul-1972	30-Sep-2009	37
44201	Ozone	39	055	0004	1	SISTERS	41.515	-81.2494	01-Apr-1997	30-Sep-2009	12
44201	Ozone	39	057	0006	1	GREEME	39.6656	-83.9433	01-Apr-1997	31-Oct-2009	13
44201	Ozone	39	061	0006	1	HAMILTO	39.2785	-84.366	01-Jun-1975	31-Oct-2009	34
44201	Ozone	39	061	0010	1	COLERA	39.2149	-84.6907	01-Apr-1978	31-Oct-2009	32
44201	Ozone	39	061	0040	1	HC-DOES	39.1286	-84.5042	01-Apr-1999	31-Oct-2009	11
44201	Ozone	39	081	0017	1	NULL	40.3661	-80.615	01-Apr-2004	30-Sep-2009	5
44201	Ozone	39	083	0002	1	CENTERE	40.3097	-82.6919	01-Aug-1988	30-Sep-2009	21
44201	Ozone	39	085	0003	1	NULL	41.6731	-81.4225	11-Jun-1985	30-Sep-2009	24
44201	Ozone	39	085	0007	1	NULL	41.7268	-81.2422	01-Apr-2009	30-Sep-2009	0
44201	Ozone	39	087	0006	1	NULL	38.5203	-82.6667	01-Jul-1990	30-Sep-2009	19
44201	Ozone	39	087	0011	1	RURAL R	38.6292	-82.4575	01-Apr-1995	30-Sep-2009	14
44201	Ozone	39	089	0005	1	HEATH H	40.0262	-82.4333	01-Apr-1991	30-Sep-2009	18
44201	Ozone	39	093	0018	1	NULL	41.4209	-82.0957	01-Apr-2005	30-Sep-2009	4
44201	Ozone	39	095	0024	1	THIS SITE	41.6442	-83.5467	01-Apr-1998	30-Sep-2009	11
44201	Ozone	39	095	0027	1	NEW OZC	41.4947	-83.7186	17-Jun-1999	30-Sep-2009	10
44201	Ozone	39	095	0034	1	NULL	41.6756	-83.3069	01-Apr-1991	30-Sep-2009	18
44201	Ozone	39	097	0007	1	MADISON	39.7886	-83.4758	01-Apr-1993	30-Sep-2009	16
44201	Ozone	39	099	0013	1	SW CORN	41.0961	-80.6586	01-Apr-2000	30-Sep-2009	9
44201	Ozone	39	103	0003	1	NULL	41.1028	-81.9117	01-Apr-1993	30-Sep-2009	16
44201	Ozone	39	103	0004	1	NULL	41.0604	-81.9239	01-Sep-2009	30-Sep-2009	0
44201	Ozone	39	109	0005	1	NULL	40.0847	-84.1147	13-Apr-1993	31-Oct-2009	17
44201	Ozone	39	113	0037	1	Eastwood	39.785	-84.1345	01-May-2008	31-Oct-2009	2
44201	Ozone	39	133	1001	1	NULL	41.1825	-81.3303	20-Jun-1978	30-Sep-2009	31
44201	Ozone	39	135	1001	1	NULL	39.8356	-84.7208	01-Jan-1976	31-Oct-2009	34
44201	Ozone	39	151	0016	1	MALONE	40.8278	-81.3786	01-May-1981	30-Sep-2009	28
44201	Ozone	39	151	0023	1	NULL	40.6717	-81.6409	09-Apr-2009	30-Sep-2009	0
44201	Ozone	39	151	4005	1	ALLIANC	40.9308	-81.1236	30-May-1991	30-Sep-2009	18
44201	Ozone	39	153	0020	1	NULL	41.1061	-81.5039	02-May-1980	30-Sep-2009	29
44201	Ozone	39	155	0009	1	NULL	41.4539	-80.5917	01-Apr-1992	30-Sep-2009	17
44201	Ozone	39	155	0011	1	NULL	41.2401	-80.6631	01-Apr-2002	30-Sep-2009	7
44201	Ozone	39	165	0007	1	NULL	39.4278	-84.2022	14-May-2003	31-Oct-2009	6

44201	Ozone	39	167	0004	1	NULL	39.4317	-81.4603	18-Jul-1990	30-Sep-2009	19
44201	Ozone	39	173	0003	1	ON THE F	41.3781	-83.6117	01-Apr-1997	30-Sep-2009	12
44201	Ozone	55	003	0010	1	BAD RIVE	46.6146	-90.6987	30-Jul-2004	31-Jul-2009	5
44201	Ozone	55	009	0026	1	UW GREE	44.53	-87.9089	18-Apr-1994	31-Jul-2009	15
44201	Ozone	55	021	0015	1	IN COLU	43.3144	-89.1089	10-Aug-1988	31-Jul-2009	21
44201	Ozone	55	025	0041	1	TRAILER	43.1008	-89.3572	15-Apr-1992	31-Jul-2009	17
44201	Ozone	55	027	0007	1	MAYVILL	43.435	-88.5278	03-Jun-1994	31-Jul-2009	15
44201	Ozone	55	029	0004	1	NULL	45.2378	-86.9936	15-Apr-1989	31-Jul-2009	20
44201	Ozone	55	037	0001	1	NULL	45.7956	-88.4006	25-May-1987	31-Jul-2009	22
44201	Ozone	55	039	0006	1	UTM POI	43.6878	-88.4219	22-Apr-1994	31-Jul-2009	15
44201	Ozone	55	041	0007	1	NULL	45.565	-88.8086	07-Jan-2004	31-Jul-2009	6
44201	Ozone	55	055	0002	1	NULL	43.0014	-88.8122	15-Apr-1988	31-Jul-2009	21
44201	Ozone	55	059	0019	1	CHIWAUP	42.5047	-87.8093	15-Apr-1988	31-Jul-2009	21
44201	Ozone	55	061	0002	1	JUMBOS	44.4428	-87.5061	15-Apr-1994	31-Jul-2009	15
44201	Ozone	55	063	0012	1	NULL	43.778	-91.225	27-Feb-2008	31-Jul-2009	1
44201	Ozone	55	071	0007	1	MANITOV	44.1386	-87.6161	15-Apr-1994	31-Jul-2009	15
44201	Ozone	55	073	0012	1	IN SHEL	44.7072	-89.7697	25-Sep-1991	31-Jul-2009	18
44201	Ozone	55	079	0010	1	HEALTH	43.0167	-87.9333	24-Jun-2003	31-Jul-2009	6
44201	Ozone	55	079	0026	1	DNR SER	43.0611	-87.9125	01-Jun-1999	31-Jul-2009	10
44201	Ozone	55	079	0041	1	AT PROB	43.0753	-87.8844	01-Jul-1973	31-Jul-2009	36
44201	Ozone	55	079	0085	1	NULL	43.1811	-87.9006	01-May-1984	31-Jul-2009	25
44201	Ozone	55	085	0004	1	ONE HAL	45.6781	-89.6322	16-Jun-1994	31-Jul-2009	15
44201	Ozone	55	087	0009	1	MOBILE	44.3069	-88.3956	15-Apr-1995	31-Jul-2009	14
44201	Ozone	55	089	0008	1	NULL	43.3431	-87.9208	05-Jun-1991	31-Jul-2009	18
44201	Ozone	55	089	0009	1	COORDIN	43.4981	-87.81	08-Jun-1994	31-Jul-2009	15
44201	Ozone	55	101	0017	1	RACINE	42.7139	-87.7986	26-Aug-1977	31-Jul-2009	32
44201	Ozone	55	105	0024	1	SOUTH C	42.5089	-89.0567	15-Apr-1994	31-Jul-2009	15
44201	Ozone	55	109	1002	1	SHELTER	45.1244	-92.6625	18-Apr-1984	31-Jul-2009	25
44201	Ozone	55	111	0007	1	DEVILS L	43.4356	-89.6803	11-May-1995	31-Jul-2009	14
44201	Ozone	55	117	0006	1	IN NATU	43.6669	-87.7164	26-Jun-1997	31-Jul-2009	12
44201	Ozone	55	123	0008	1	ON HILL	43.7022	-90.5683	19-Mar-1990	31-Jul-2009	19
44201	Ozone	55	125	0001	1	TROUT L	46.0481	-89.6536	16-Dec-1992	31-Jul-2009	17
44201	Ozone	55	127	0005	1	NULL	42.58	-88.4992	10-Jul-1987	31-Jul-2009	22
44201	Ozone	55	131	0009	1	REPLACE	43.3272	-88.2203	06-Jun-1991	31-Jul-2009	18
44201	Ozone	55	133	0027	1	CLEVELA	43.0203	-88.215	27-Apr-2004	31-Jul-2009	5
81102	Pm10 Total 0	17	031	0001	2	VILLAGE	NULL	NULL	01-Jan-1996	28-Sep-2009	14
81102	Pm10 Total 0	17	031	0022	4	WASHING	NULL	NULL	01-Jan-2001	31-Oct-2009	9
81102	Pm10 Total 0	17	031	0022	3	WASHING	NULL	NULL	01-Jan-2001	31-Oct-2009	9
81102	Pm10 Total 0	17	031	0060	1	CARVER	NULL	NULL	01-Jan-1988	28-Sep-2009	22
81102	Pm10 Total 0	17	031	1016	3	VILLAGE	NULL	NULL	01-Jan-1995	31-Oct-2009	15
81102	Pm10 Total 0	17	031	1016	4	VILLAGE	NULL	NULL	01-Jan-1995	31-Oct-2009	15
81102	Pm10 Total 0	17	031	1901	1	BUILDING	NULL	NULL	01-Jan-1996	28-Sep-2009	14
81102	Pm10 Total 0	17	031	2001	1	EISENH	NULL	NULL	01-Jan-1986	28-Sep-2009	24
81102	Pm10 Total 0	17	031	3301	1	GRAVES	NULL	NULL	01-Jan-1989	28-Sep-2009	21
81102	Pm10 Total 0	17	031	4201	1	NORTHB	NULL	NULL	01-Jan-2006	28-Sep-2009	4
81102	Pm10 Total 0	17	077	0004	1	MAINTEN	NULL	NULL	01-Jan-1995	28-Sep-2009	15
81102	Pm10 Total 0	17	099	0007	3	IEPA TRA	NULL	NULL	01-Jan-1995	31-Oct-2009	15
81102	Pm10 Total 0	17	099	0007	4	IEPA TRA	NULL	NULL	01-Jan-1995	31-Oct-2009	15
81102	Pm10 Total 0	17	117	0002	1	IEPA TRA	NULL	NULL	14-Aug-1989	28-Sep-2009	20
81102	Pm10 Total 0	17	119	0010	1	AIR PRO	NULL	NULL	01-Jan-1984	28-Sep-2009	26
81102	Pm10 Total 0	17	119	1007	4	FIRESTA	NULL	NULL	01-Jan-2007	28-Sep-2009	3
81102	Pm10 Total 0	17	119	1007	1	FIRESTA	NULL	NULL	01-Jan-1984	13-Oct-2009	26
81102	Pm10 Total 0	17	119	1007	1	FIRESTA	NULL	NULL	01-Jan-2007	13-Oct-2009	3
81102	Pm10 Total 0	17	119	3007	1	WATER F	NULL	NULL	01-Jan-1984	28-Sep-2009	26
81102	Pm10 Total 0	17	143	0037	1	CITY OFF	NULL	NULL	01-Jan-1987	28-Sep-2009	23
81102	Pm10 Total 0	17	163	0010	1	IEPA-RAF	NULL	NULL	01-Jan-1984	28-Sep-2009	26
81102	Pm10 Total 0	17	197	1002	1	PERSHIN	NULL	NULL	01-Jan-1984	28-Sep-2009	26
81102	Pm10 Total 0	18	019	0006	1	NULL	38.2777	-85.7402	26-Jun-2003	28-Oct-2009	6
81102	Pm10 Total 0	18	037	2001	2	Jasper PC	38.3914	-86.9292	06-Jul-1987	28-Oct-2009	22

81102	Pm10 Total 0	18	063	0002	1	Pittsboro	NULL	NULL	01-Apr-1998	26-Mar-2009	11
81102	Pm10 Total 0	18	063	0002	1	Pittsboro	NULL	NULL	05-Nov-2003	26-Mar-2009	5
81102	Pm10 Total 0	18	089	0006	2	Franklin S	41.6361	-87.4408	01-Oct-1987	28-Oct-2009	22
81102	Pm10 Total 0	18	089	0006	3	Franklin S	41.6361	-87.4408	03-Oct-1999	28-Oct-2009	10
81102	Pm10 Total 0	18	089	0022	2	LOCATEL	41.6067	-87.3047	01-Mar-1997	31-Aug-2009	13
81102	Pm10 Total 0	18	089	0023	1	SITE MOV	NULL	NULL	01-Jan-1997	28-Oct-2009	13
81102	Pm10 Total 0	18	089	0031	2	GARY WA	41.5985	-87.343	01-Jul-2005	28-Oct-2009	4
81102	Pm10 Total 0	18	089	0031	1	GARY WA	41.5985	-87.343	01-Jul-2005	28-Oct-2009	4
81102	Pm10 Total 0	18	089	2010	2	NULL	41.6783	-87.5083	01-Oct-1987	28-Oct-2009	22
81102	Pm10 Total 0	18	097	0043	1	NULL	39.745	-86.1665	29-Oct-1986	28-Oct-2009	23
81102	Pm10 Total 0	18	097	0066	1	NULL	39.7604	-86.1088	01-Mar-1987	12-Feb-2009	22
81102	Pm10 Total 0	18	097	0071	2	NULL	39.7479	-86.1758	05-Jan-1998	28-Oct-2009	12
81102	Pm10 Total 0	18	097	0071	1	NULL	39.7479	-86.1758	03-Mar-1987	28-Oct-2009	23
81102	Pm10 Total 0	18	097	0073	1	NULL	39.7895	-86.0608	05-Apr-1990	28-Oct-2009	20
81102	Pm10 Total 0	18	097	0073	2	NULL	39.7895	-86.0608	03-Oct-1999	28-Oct-2009	10
81102	Pm10 Total 0	18	097	0084	1	NULL	39.7589	-86.1154	15-Feb-2009	28-Oct-2009	1
81102	Pm10 Total 0	18	123	0006	1	TELL CIT	NULL	NULL	01-Feb-1997	19-Apr-2009	12
81102	Pm10 Total 0	18	123	0006	2	TELL CIT	NULL	NULL	03-Oct-1999	19-Apr-2009	10
81102	Pm10 Total 0	18	123	0007	1	WAUPAC	NULL	NULL	01-Feb-1997	19-Apr-2009	12
81102	Pm10 Total 0	18	127	0023	3	NULL	41.6167	-87.1458	01-Oct-1995	31-Aug-2009	14
81102	Pm10 Total 0	18	127	0024	1	NULL	41.6175	-87.1992	01-Jan-1989	28-Oct-2009	21
81102	Pm10 Total 0	18	163	0012	1	NULL	38.0217	-87.5694	01-Jul-2003	30-Jun-2009	6
81102	Pm10 Total 0	18	163	0012	1	NULL	38.0217	-87.5694	01-Apr-1988	30-Jun-2009	21
81102	Pm10 Total 0	18	163	0012	1	NULL	38.0217	-87.5694	11-Jan-1999	30-Jun-2009	10
81102	Pm10 Total 0	18	163	0021	1	NULL	38.0132	-87.5779	08-Jul-2009	28-Oct-2009	0
81102	Pm10 Total 0	18	167	0018	2	TERRE H	39.4861	-87.4014	05-Jul-1999	26-Mar-2009	10
81102	Pm10 Total 0	18	167	0018	1	TERRE H	39.4861	-87.4014	01-Jul-1988	28-Oct-2009	21
81102	Pm10 Total 0	18	183	0001	1	UPWIND	NULL	NULL	29-Oct-2001	30-Jun-2009	8
81102	Pm10 Total 0	18	183	0002	1	NULL	NULL	NULL	29-Oct-2001	30-Jun-2009	8
81102	Pm10 Total 0	18	183	0002	2	NULL	NULL	NULL	29-Oct-2001	30-Jun-2009	8
81102	Pm10 Total 0	26	081	0007	1	NULL	42.9561	-85.6792	03-Feb-1989	29-Aug-2009	21
81102	Pm10 Total 0	26	081	0020	1	NULL	42.9842	-85.6714	20-Mar-1987	29-Aug-2009	22
81102	Pm10 Total 0	26	163	0001	1	NULL	42.2286	-83.2083	12-Sep-1987	29-Aug-2009	22
81102	Pm10 Total 0	26	163	0005	1	NULL	42.2672	-83.1322	02-Mar-1987	29-Aug-2009	22
81102	Pm10 Total 0	26	163	0005	1	NULL	42.2672	-83.1322	25-Jan-2009	29-Aug-2009	1
81102	Pm10 Total 0	26	163	0015	1	NULL	42.3028	-83.1067	27-Mar-1987	29-Aug-2009	22
81102	Pm10 Total 0	26	163	0033	9	PROPER	42.3067	-83.1489	05-Jan-2006	29-Aug-2009	4
81102	Pm10 Total 0	26	163	0033	1	PROPER	42.3067	-83.1489	12-Jun-1990	29-Aug-2009	19
81102	Pm10 Total 0	26	163	0033	3	PROPER	42.3067	-83.1489	01-Apr-2000	30-Sep-2009	9
81102	Pm10 Total 0	27	163	0009	1	MPC 435	44.8462	-92.9956	01-Jan-1993	29-Aug-2009	17
81102	Pm10 Total 0	27	163	0009	1	MPC 435	44.8462	-92.9956	01-Dec-2005	29-Aug-2009	4
81102	Pm10 Total 0	27	137	0032	2	Oneota St	46.7515	-92.1413	05-Mar-1986	29-Aug-2009	23
81102	Pm10 Total 0	27	137	0032	1	Oneota St	46.7515	-92.1413	01-Jan-1985	29-Aug-2009	25
81102	Pm10 Total 0	27	123	0866	1	Red Rock	44.8993	-93.0171	11-Jan-1996	29-Aug-2009	14
81102	Pm10 Total 0	27	123	0866	2	Red Rock	44.8993	-93.0171	12-Jan-1996	29-Aug-2009	14
81102	Pm10 Total 0	27	123	0868	3	Ramsey H	44.9507	-93.0983	10-Dec-2002	31-Aug-2009	7
81102	Pm10 Total 0	27	053	0966	1	City of Lal	44.9794	-93.2661	07-Oct-2002	29-Aug-2009	7
81102	Pm10 Total 0	27	123	1003	1	Vandalia S	44.9613	-93.1902	20-May-1994	29-Aug-2009	15
81102	Pm10 Total 0	27	053	1007	1	Humboldt	45.0397	-93.2987	01-Jan-1985	29-Aug-2009	25
81102	Pm10 Total 0	27	109	5008	3	Ben Frank	43.9969	-92.4504	01-Oct-1997	31-Aug-2009	12
81102	Pm10 Total 0	27	109	5008	3	Ben Frank	43.9969	-92.4504	01-Feb-2008	31-Aug-2009	2
81102	Pm10 Total 0	27	137	7001	1	Virginia	47.5234	-92.5363	22-Nov-1986	29-Aug-2009	23
81102	Pm10 Total 0	39	003	0006	1	NULL	40.7525	-84.0856	01-May-1992	28-Oct-2009	17
81102	Pm10 Total 0	39	003	0007	1	NULL	40.7525	-84.07	01-May-1992	28-Oct-2009	17
81102	Pm10 Total 0	39	003	0008	1	NULL	40.7442	-84.0939	01-May-1992	28-Oct-2009	17
81102	Pm10 Total 0	39	017	0003	1	VERITY H	39.4936	-84.3539	01-Dec-1989	28-Sep-2009	20
81102	Pm10 Total 0	39	017	0015	1	OHIO BEL	39.4899	-84.3641	06-Jan-1991	28-Sep-2009	19
81102	Pm10 Total 0	39	029	0020	1	EAST LIV	40.6397	-80.5239	21-Jun-1997	28-Sep-2009	12
81102	Pm10 Total 0	39	029	0022	1	La Croft E	40.635	-80.5467	31-Jan-2001	28-Sep-2009	9

81102	Pm10 Total 0	39	035	0027	1	P. L. DUN	41.4775	-81.7031	30-Sep-1988	06-Jul-2009	21
81102	Pm10 Total 0	39	035	0038	1	ST. THEC	41.4769	-81.6819	10-Apr-1987	30-Sep-2009	22
81102	Pm10 Total 0	39	035	0045	1	F.S. NO.	41.4717	-81.6572	23-Aug-1985	28-Sep-2009	24
81102	Pm10 Total 0	39	035	0060	1	GT CRAIG	41.494	-81.6785	06-Feb-1993	19-May-2009	16
81102	Pm10 Total 0	39	035	0060	3	GT CRAIG	41.494	-81.6785	14-Aug-2009	30-Sep-2009	0
81102	Pm10 Total 0	39	035	0060	3	GT CRAIG	41.494	-81.6785	01-Apr-1998	30-Sep-2009	11
81102	Pm10 Total 0	39	035	0065	1	LOCATEE	41.4464	-81.6619	15-Jul-1997	28-Sep-2009	12
81102	Pm10 Total 0	39	035	1002	1	BROOKP	41.3956	-81.8181	07-Aug-1988	28-Sep-2009	21
81102	Pm10 Total 0	39	035	1002	1	BROOKP	41.3956	-81.8181	01-Jul-1987	28-Sep-2009	22
81102	Pm10 Total 0	39	049	0024	1	FAIRGRC	39.9983	-82.9931	13-Jun-1986	22-Sep-2009	23
81102	Pm10 Total 0	39	057	0005	1	SITE ATC	39.8081	-83.8869	04-Jan-1997	27-Nov-2009	13
81102	Pm10 Total 0	39	061	0014	1	CARTHAQ	39.1942	-84.4789	06-Aug-1988	28-Sep-2009	21
81102	Pm10 Total 0	39	061	0040	1	HC-DOES	39.1286	-84.5042	06-Apr-1999	28-Sep-2009	10
81102	Pm10 Total 0	39	061	0040	9	HC-DOES	39.1286	-84.5042	01-Feb-2001	30-Sep-2009	9
81102	Pm10 Total 0	39	061	0040	9	HC-DOES	39.1286	-84.5042	01-Sep-2008	30-Sep-2009	1
81102	Pm10 Total 0	39	061	0040	9	HC-DOES	39.1286	-84.5042	11-Jan-2006	30-Sep-2009	4
81102	Pm10 Total 0	39	061	5001	1	LOCKLAN	39.2264	-84.4539	01-Apr-1985	28-Sep-2009	24
81102	Pm10 Total 0	39	063	0002	1	NULL	41.0106	-83.6881	22-Aug-1991	28-Oct-2009	18
81102	Pm10 Total 0	39	063	0003	1	NULL	41.0128	-83.6969	22-Aug-1991	28-Oct-2009	18
81102	Pm10 Total 0	39	063	0004	1	NULL	41.0236	-83.6856	22-Aug-1991	28-Oct-2009	18
81102	Pm10 Total 0	39	081	0001	1	NULL	40.2614	-80.6336	01-Aug-1988	28-Oct-2009	21
81102	Pm10 Total 0	39	081	0017	1	NULL	40.3661	-80.615	01-Nov-2003	28-Oct-2009	6
81102	Pm10 Total 0	39	085	1001	1	NULL	41.755	-81.2731	10-Jan-1989	28-Sep-2009	21
81102	Pm10 Total 0	39	087	0012	1	NULL	38.5081	-82.6593	11-Feb-2008	28-Sep-2009	2
81102	Pm10 Total 0	39	093	3002	1	NULL	41.4631	-82.1144	10-Jan-1991	28-Sep-2009	19
81102	Pm10 Total 0	39	095	1003	2	NULL	41.68	-83.4785	01-Nov-1996	30-Sep-2009	13
81102	Pm10 Total 0	39	099	0005	1	NULL	41.1111	-80.6453	21-Dec-1988	28-Sep-2009	21
81102	Pm10 Total 0	39	099	0006	1	NULL	41.1167	-80.6697	04-Oct-1985	28-Sep-2009	24
81102	Pm10 Total 0	39	113	7001	2	NULL	39.7142	-84.2181	02-Nov-1984	27-Nov-2009	25
81102	Pm10 Total 0	39	113	7001	1	NULL	39.7142	-84.2181	02-Nov-1984	27-Nov-2009	25
81102	Pm10 Total 0	39	145	0013	1	NULL	38.7542	-82.9175	01-Aug-1988	28-Sep-2009	21
81102	Pm10 Total 0	39	145	0019	1	OFFICES	38.735	-82.9989	29-Aug-2001	28-Sep-2009	8
81102	Pm10 Total 0	39	145	0020	1	NULL	38.609	-82.8229	20-Nov-2004	30-Sep-2009	5
81102	Pm10 Total 0	39	145	0021	1	NULL	38.6006	-82.8298	20-Nov-2004	30-Sep-2009	5
81102	Pm10 Total 0	39	145	0022	1	NULL	38.588	-82.835	20-Nov-2004	30-Sep-2009	5
81102	Pm10 Total 0	39	155	0005	1	NULL	41.2308	-80.8019	05-Dec-1988	28-Sep-2009	21
81102	Pm10 Total 0	39	155	0006	1	NULL	41.2019	-80.8106	06-Jun-2009	28-Sep-2009	0
81102	Pm10 Total 0	39	155	0006	1	NULL	41.2019	-80.8106	01-Nov-1990	28-Sep-2009	19
81102	Pm10 Total 0	55	025	0047	1	ON ROOF	43.0733	-89.4358	01-Jan-2008	30-Jul-2009	2
81102	Pm10 Total 0	55	027	0007	3	MAYVILL	43.435	-88.5278	01-Mar-2005	31-May-2009	4
81102	Pm10 Total 0	55	027	0007	2	MAYVILL	43.435	-88.5278	17-Jan-2006	12-Jul-2009	3
81102	Pm10 Total 0	55	027	0007	1	MAYVILL	43.435	-88.5278	28-Jan-2005	30-Jul-2009	5
81102	Pm10 Total 0	55	041	0007	1	NULL	45.565	-88.8086	07-Jun-2002	24-Jul-2009	7
81102	Pm10 Total 0	55	041	0007	1	NULL	45.565	-88.8086	01-Jul-2007	24-Jul-2009	2
81102	Pm10 Total 0	55	079	0010	1	HEALTH C	43.0167	-87.9333	04-Apr-1997	24-Jul-2009	12
81102	Pm10 Total 0	55	079	0010	1	HEALTH C	43.0167	-87.9333	17-Jul-2007	24-Jul-2009	2
81102	Pm10 Total 0	55	079	0059	1	FENCED-	42.955	-87.9342	18-Mar-1988	30-Jul-2009	21
81102	Pm10 Total 0	55	079	0059	2	FENCED-	42.955	-87.9342	12-Nov-2005	30-Jul-2009	4
81102	Pm10 Total 0	55	133	0027	2	CLEVELA	43.0203	-88.215	31-Mar-2004	31-May-2009	5
81102	Pm10 Total 0	55	133	0027	1	CLEVELA	43.0203	-88.215	03-Feb-1989	30-Jul-2009	20
82128	Lead Pm10 S	17	031	4201	6	NORTHB	NULL	NULL	01-Jan-2005	30-Jun-2009	4
82128	Lead Pm10 S	26	163	0033	1	PROPER	42.3067	-83.1489	03-Jan-2003	29-Aug-2009	7
82128	Lead Pm10 S	26	163	0033	9	PROPER	42.3067	-83.1489	03-Jan-2003	29-Aug-2009	7
82128	Lead Pm10 S	55	027	0007	1	MAYVILL	43.435	-88.5278	28-Jan-2005	26-Mar-2009	4
82128	Lead Pm10 S	55	041	0007	1	NULL	45.565	-88.8086	01-Jul-2007	20-Mar-2009	2
82128	Lead Pm10 S	55	079	0010	1	HEALTH C	43.0167	-87.9333	17-Jul-2007	14-Mar-2009	2
88101	Pm2.5 - Local	17	001	0007	1	JOHN WC	NULL	NULL	01-Apr-2007	28-Sep-2009	2
88101	Pm2.5 - Local	17	019	0004	1	BOOKER	NULL	NULL	01-Jan-2000	28-Sep-2009	10
88101	Pm2.5 - Local	17	019	1001	1	ISWS CLI	NULL	NULL	01-Jan-1999	28-Sep-2009	11

88101	Pm2.5 - Local	17	031	0022	1	WASHING	NULL	NULL	01-Jan-1999	28-Sep-2009	11
88101	Pm2.5 - Local	17	031	0050	1	SE POLIC	NULL	NULL	01-Jan-1999	28-Sep-2009	11
88101	Pm2.5 - Local	17	031	0052	1	MAYFAIR	NULL	NULL	01-Jan-1998	30-Sep-2009	12
88101	Pm2.5 - Local	17	031	0057	1	SPRINGF	NULL	NULL	01-Jan-2000	28-Sep-2009	10
88101	Pm2.5 - Local	17	031	0076	1	COM ED	NULL	NULL	01-Jan-2000	28-Sep-2009	10
88101	Pm2.5 - Local	17	031	1016	1	VILLAGE	NULL	NULL	01-Jan-1999	30-Sep-2009	11
88101	Pm2.5 - Local	17	031	2001	1	EISENHOF	NULL	NULL	01-Jan-1999	28-Sep-2009	11
88101	Pm2.5 - Local	17	031	3103	1	IEPA TRAF	NULL	NULL	01-Jan-2004	28-Sep-2009	6
88101	Pm2.5 - Local	17	031	3301	1	GRAVES	NULL	NULL	01-Jan-1999	28-Sep-2009	11
88101	Pm2.5 - Local	17	031	4007	1	REGIONAL	NULL	NULL	01-Jan-2001	28-Sep-2009	9
88101	Pm2.5 - Local	17	031	4201	1	NORTHB	NULL	NULL	01-Jan-1998	28-Sep-2009	12
88101	Pm2.5 - Local	17	031	6005	1	LIBERTY	NULL	NULL	01-Jan-2000	28-Sep-2009	10
88101	Pm2.5 - Local	17	043	4002	1	CITY HAL	NULL	NULL	01-Jan-1999	28-Sep-2009	11
88101	Pm2.5 - Local	17	065	0002	1	TEN MILE	NULL	NULL	01-May-2005	28-Sep-2009	4
88101	Pm2.5 - Local	17	083	1001	1	ILLINI JR	NULL	NULL	01-Jan-2004	28-Sep-2009	6
88101	Pm2.5 - Local	17	089	0003	1	MCKINLEY	NULL	NULL	01-Jan-2000	28-Sep-2009	10
88101	Pm2.5 - Local	17	089	0007	1	KANE CO	NULL	NULL	01-Jan-2005	28-Sep-2009	5
88101	Pm2.5 - Local	17	097	1007	1	CAMP LO	NULL	NULL	01-Jan-2000	28-Sep-2009	10
88101	Pm2.5 - Local	17	099	0007	1	IEPA TRAF	NULL	NULL	01-Jan-2000	28-Sep-2009	10
88101	Pm2.5 - Local	17	111	0001	1	CARY GR	NULL	NULL	01-Jan-2000	28-Sep-2009	10
88101	Pm2.5 - Local	17	113	2003	1	ISU HARF	NULL	NULL	01-Jan-2005	28-Sep-2009	5
88101	Pm2.5 - Local	17	115	0013	1	IEPA TRAF	NULL	NULL	01-Jan-1999	28-Sep-2009	11
88101	Pm2.5 - Local	17	119	0024	1	Gateway	NULL	NULL	01-Jul-2007	28-Sep-2009	2
88101	Pm2.5 - Local	17	119	1007	1	FIRESTA	NULL	NULL	01-Jan-1999	30-Sep-2009	11
88101	Pm2.5 - Local	17	119	2009	1	SIU DENT	NULL	NULL	01-Jan-2000	28-Sep-2009	10
88101	Pm2.5 - Local	17	119	3007	1	WATER F	NULL	NULL	01-Jan-1999	28-Sep-2009	11
88101	Pm2.5 - Local	17	143	0037	1	CITY OFF	NULL	NULL	01-Jan-1999	28-Sep-2009	11
88101	Pm2.5 - Local	17	157	0001	1	IEPA TRAF	NULL	NULL	01-Jan-1999	28-Sep-2009	11
88101	Pm2.5 - Local	17	161	3002	1	ROCK ISL	NULL	NULL	01-Jan-2001	28-Sep-2009	9
88101	Pm2.5 - Local	17	163	0010	1	IEPA-RAF	NULL	NULL	01-Jan-1999	28-Sep-2009	11
88101	Pm2.5 - Local	17	163	4001	1	VILLAGE	NULL	NULL	01-Jan-2000	28-Sep-2009	10
88101	Pm2.5 - Local	17	167	0012	1	AGRICUL	NULL	NULL	01-Jan-1999	28-Sep-2009	11
88101	Pm2.5 - Local	17	197	1002	1	PERSHIN	NULL	NULL	01-Jan-1999	28-Sep-2009	11
88101	Pm2.5 - Local	17	197	1011	1	COM ED	NULL	NULL	01-Jan-1999	28-Sep-2009	11
88101	Pm2.5 - Local	17	201	0013	1	WINNEBA	NULL	NULL	01-Jan-2005	28-Sep-2009	5
88101	Pm2.5 - Local	18	003	0004	1	NULL	41.0947	-85.1019	01-Jan-1999	31-Oct-2009	11
88101	Pm2.5 - Local	18	019	0006	1	NULL	38.2777	-85.7402	26-Jun-2003	31-Oct-2009	6
88101	Pm2.5 - Local	18	019	0008	1	NULL	38.3938	-85.6642	01-Jul-2008	31-Oct-2009	1
88101	Pm2.5 - Local	18	035	0006	1	NULL	40.2011	-85.3881	15-Oct-1999	31-Oct-2009	10
88101	Pm2.5 - Local	18	037	2001	1	Jasper PC	38.3914	-86.9292	01-Jan-2000	31-Oct-2009	10
88101	Pm2.5 - Local	18	039	0008	1	NULL	41.6569	-85.9684	01-Jan-2008	31-Oct-2009	2
88101	Pm2.5 - Local	18	043	1004	2	NULL	38.3081	-85.8342	01-Jan-1999	28-Oct-2009	11
88101	Pm2.5 - Local	18	043	1004	1	NULL	38.3081	-85.8342	01-Jan-1999	31-Oct-2009	11
88101	Pm2.5 - Local	18	051	0012	1	NULL	38.3229	-87.3188	17-Jan-2008	31-Oct-2009	2
88101	Pm2.5 - Local	18	065	0003	1	SHENANI	40.0117	-85.5236	26-Sep-2000	31-Oct-2009	9
88101	Pm2.5 - Local	18	067	0003	1	SITE LOC	NULL	NULL	11-Jun-1999	31-Oct-2009	10
88101	Pm2.5 - Local	18	083	0004	1	NULL	38.7408	-87.4847	01-Jan-2000	31-Oct-2009	10
88101	Pm2.5 - Local	18	089	0006	1	Franklin S	41.6361	-87.4408	27-Jan-1999	31-Oct-2009	11
88101	Pm2.5 - Local	18	089	0022	1	LOCATED	41.6067	-87.3047	04-Mar-1999	31-Oct-2009	11
88101	Pm2.5 - Local	18	089	0026	1	25TH & B	NULL	NULL	12-Feb-2000	31-Oct-2009	10
88101	Pm2.5 - Local	18	089	0027	1	READY E	NULL	NULL	18-Feb-2000	31-Oct-2009	10
88101	Pm2.5 - Local	18	089	0031	2	GARY WA	41.5985	-87.343	01-Jul-2005	28-Oct-2009	4
88101	Pm2.5 - Local	18	089	0031	1	GARY WA	41.5985	-87.343	01-Jul-2005	31-Oct-2009	4
88101	Pm2.5 - Local	18	089	2004	1	NULL	NULL	NULL	11-Feb-1999	31-Oct-2009	11
88101	Pm2.5 - Local	18	089	2010	1	NULL	41.6783	-87.5083	27-Jan-1999	31-Oct-2009	11
88101	Pm2.5 - Local	18	091	0011	1	MARSH E	NULL	NULL	17-Dec-1999	31-Oct-2009	10
88101	Pm2.5 - Local	18	095	0009	1	NULL	40.1119	-85.68	19-Mar-1999	31-Oct-2009	11
88101	Pm2.5 - Local	18	097	0043	1	NULL	39.745	-86.1665	24-Jan-1999	31-Oct-2009	11
88101	Pm2.5 - Local	18	097	0066	1	NULL	39.7604	-86.1088	24-Jan-1999	15-Feb-2009	10

88101	Pm2.5 - Local	18	097	0078	1	IN PARKI	39.8111	-86.1145	07-Mar-1999	31-Oct-2009	11
88101	Pm2.5 - Local	18	097	0081	2	SCHOOL	39.7889	-86.2146	11-Feb-1999	28-Oct-2009	11
88101	Pm2.5 - Local	18	097	0081	1	SCHOOL	39.7889	-86.2146	22-Jan-1999	31-Oct-2009	11
88101	Pm2.5 - Local	18	097	0083	1	ON ROOF	39.7749	-86.1221	22-Jan-1999	31-Oct-2009	11
88101	Pm2.5 - Local	18	097	0084	1	NULL	39.7589	-86.1154	15-Feb-2009	31-Oct-2009	1
88101	Pm2.5 - Local	18	105	0003	1	NULL	39.1594	-86.5048	01-Apr-2009	31-Oct-2009	1
88101	Pm2.5 - Local	18	127	0024	1	NULL	41.6175	-87.1992	27-Jan-1999	31-Oct-2009	11
88101	Pm2.5 - Local	18	141	0014	1	NUNER E	NULL	NULL	20-Nov-1999	31-Oct-2009	10
88101	Pm2.5 - Local	18	141	0015	3	SOUTH B	41.6967	-86.2147	15-Oct-2008	30-Sep-2009	1
88101	Pm2.5 - Local	18	141	0015	2	SOUTH B	41.6967	-86.2147	01-Jun-2006	28-Oct-2009	3
88101	Pm2.5 - Local	18	141	0015	1	SOUTH B	41.6967	-86.2147	01-Jun-2006	31-Oct-2009	3
88101	Pm2.5 - Local	18	147	0009	1	DAVID T	NULL	NULL	01-Feb-2000	31-Oct-2009	10
88101	Pm2.5 - Local	18	157	0008	2	NULL	40.4316	-86.8525	01-Oct-2002	28-Oct-2009	7
88101	Pm2.5 - Local	18	157	0008	1	NULL	40.4316	-86.8525	01-Oct-2002	31-Oct-2009	7
88101	Pm2.5 - Local	18	163	0006	1	Evansville	37.9717	-87.5672	15-Apr-1999	08-Mar-2009	10
88101	Pm2.5 - Local	18	163	0006	2	Evansville	37.9717	-87.5672	15-Apr-1999	08-Mar-2009	10
88101	Pm2.5 - Local	18	163	0012	1	NULL	38.0217	-87.5694	15-Apr-1999	09-Jul-2009	10
88101	Pm2.5 - Local	18	163	0016	1	SITE IS L	NULL	NULL	05-Jun-1999	31-Oct-2009	10
88101	Pm2.5 - Local	18	163	0020	2	NULL	37.9752	-87.5678	10-Mar-2009	28-Oct-2009	1
88101	Pm2.5 - Local	18	163	0020	1	NULL	37.9752	-87.5678	10-Mar-2009	31-Oct-2009	1
88101	Pm2.5 - Local	18	163	0021	1	NULL	38.0132	-87.5779	08-Jul-2009	31-Oct-2009	0
88101	Pm2.5 - Local	18	167	0018	1	TERRE H	39.4861	-87.4014	19-Mar-1999	31-Oct-2009	11
88101	Pm2.5 - Local	18	167	0023	1	SITE LOC	NULL	NULL	06-Dec-1999	31-Oct-2009	10
88101	Pm2.5 - Local	26	005	0003	1	NULL	42.7678	-86.1486	31-Oct-1998	28-Sep-2009	11
88101	Pm2.5 - Local	26	017	0014	1	JENISON	43.5714	-83.8908	24-Aug-2000	25-Sep-2009	9
88101	Pm2.5 - Local	26	021	0014	1	NULL	42.1978	-86.3097	07-Nov-1998	28-Sep-2009	11
88101	Pm2.5 - Local	26	049	0021	1	NULL	43.0472	-83.6703	16-Dec-1998	28-Sep-2009	11
88101	Pm2.5 - Local	26	065	0012	1	NULL	42.7386	-84.5347	07-Nov-1998	28-Sep-2009	11
88101	Pm2.5 - Local	26	077	0008	1	KALAMAZ	42.2781	-85.5419	19-Nov-1998	28-Sep-2009	11
88101	Pm2.5 - Local	26	077	0008	2	KALAMAZ	42.2781	-85.5419	19-Nov-1998	28-Sep-2009	11
88101	Pm2.5 - Local	26	081	0007	1	NULL	42.9561	-85.6792	03-Jan-2007	25-Sep-2009	3
88101	Pm2.5 - Local	26	081	0020	2	NULL	42.9842	-85.6714	23-Oct-1998	28-Sep-2009	11
88101	Pm2.5 - Local	26	081	0020	1	NULL	42.9842	-85.6714	23-Oct-1998	28-Sep-2009	11
88101	Pm2.5 - Local	26	091	0007	1	6792 RAI	41.9956	-83.9467	03-Apr-2008	28-Sep-2009	1
88101	Pm2.5 - Local	26	099	0009	1	NULL	42.7314	-82.7936	22-Dec-1998	28-Sep-2009	11
88101	Pm2.5 - Local	26	101	0922	1	NULL	44.307	-86.2427	02-Apr-2006	28-Sep-2009	3
88101	Pm2.5 - Local	26	113	0001	1	LOCATED	44.3106	-84.8919	08-Feb-2003	28-Sep-2009	7
88101	Pm2.5 - Local	26	115	0005	1	DEAN RC	41.7639	-83.4719	17-Dec-1999	28-Sep-2009	10
88101	Pm2.5 - Local	26	121	0040	1	APPLE A	43.2331	-86.2386	18-Dec-1998	28-Sep-2009	11
88101	Pm2.5 - Local	26	125	0001	1	NULL	42.4631	-83.1833	25-Dec-1998	28-Sep-2009	11
88101	Pm2.5 - Local	26	139	0005	1	NULL	42.8944	-85.8528	07-Nov-1998	28-Sep-2009	11
88101	Pm2.5 - Local	26	147	0005	1	NULL	42.9533	-82.4564	03-Jan-1999	25-Sep-2009	11
88101	Pm2.5 - Local	26	161	0008	1	TOWNER	42.2406	-83.5997	04-Aug-1999	28-Sep-2009	10
88101	Pm2.5 - Local	26	161	0008	2	TOWNER	42.2406	-83.5997	04-Aug-1999	28-Sep-2009	10
88101	Pm2.5 - Local	26	163	0001	2	NULL	42.2286	-83.2083	12-May-1999	28-Sep-2009	10
88101	Pm2.5 - Local	26	163	0001	1	NULL	42.2286	-83.2083	12-May-1999	30-Sep-2009	10
88101	Pm2.5 - Local	26	163	0015	1	NULL	42.3028	-83.1067	26-Feb-1999	28-Sep-2009	11
88101	Pm2.5 - Local	26	163	0016	1	NULL	42.3578	-83.0962	12-May-1999	28-Sep-2009	10
88101	Pm2.5 - Local	26	163	0019	1	NULL	42.4308	-83.0003	30-Apr-2000	28-Sep-2009	9
88101	Pm2.5 - Local	26	163	0025	1	SCHOOL	42.4231	-83.4264	22-Aug-1999	28-Sep-2009	10
88101	Pm2.5 - Local	26	163	0033	1	PROPER	42.3067	-83.1489	05-Feb-1999	28-Sep-2009	11
88101	Pm2.5 - Local	26	163	0036	1	92 FEET	42.1873	-83.154	20-Feb-1999	28-Sep-2009	11
88101	Pm2.5 - Local	26	163	0038	1	NULL	42.335	-83.1097	26-Dec-2004	28-Sep-2009	5
88101	Pm2.5 - Local	26	163	0039	1	NULL	42.3233	-83.0686	26-Aug-2005	28-Sep-2009	4
88101	Pm2.5 - Local	27	163	0446	1	Point Rd.	45.028	-92.7742	17-May-2007	29-Aug-2009	2
88101	Pm2.5 - Local	27	037	0470	1	Apple Val	44.7385	-93.2373	03-Oct-2000	29-Aug-2009	9
88101	Pm2.5 - Local	27	139	0505	1	Shakopee	44.7914	-93.5125	01-Jan-2000	29-Aug-2009	10
88101	Pm2.5 - Local	27	123	0866	1	Red Rock	44.8993	-93.0171	01-Apr-1999	29-Aug-2009	10
88101	Pm2.5 - Local	27	123	0866	2	Red Rock	44.8993	-93.0171	12-Jul-1999	29-Aug-2009	10

88101	Pm2.5 - Local	27	123	0868	1	Ramsey H	44.9507	-93.0983	31-Mar-1999	29-Aug-2009	10
88101	Pm2.5 - Local	27	123	0871	2	HARDING	44.9594	-93.0359	27-Apr-2001	29-Aug-2009	8
88101	Pm2.5 - Local	27	123	0871	1	HARDING	44.9594	-93.0359	24-Apr-1999	29-Aug-2009	10
88101	Pm2.5 - Local	27	053	0961	1	RICHFIEL	44.8755	-93.2589	12-Apr-1999	29-Aug-2009	10
88101	Pm2.5 - Local	27	053	0963	1	HC Ander	44.9537	-93.2582	07-Jan-2001	29-Aug-2009	9
88101	Pm2.5 - Local	27	053	1007	1	Humboldt	45.0397	-93.2987	24-Apr-1999	29-Aug-2009	10
88101	Pm2.5 - Local	27	053	2006	1	St. Louis	44.9481	-93.3432	24-Apr-1999	29-Aug-2009	10
88101	Pm2.5 - Local	27	095	3051	1	Mille Lacs	46.2053	-93.7595	06-Dec-1999	29-Aug-2009	10
88101	Pm2.5 - Local	27	145	3052	1	Talahi Sci	45.5498	-94.1335	20-Dec-1999	29-Aug-2009	10
88101	Pm2.5 - Local	27	109	5008	1	Ben Frank	43.9969	-92.4504	07-Jan-2000	29-Aug-2009	10
88101	Pm2.5 - Local	27	137	7001	1	Virginia	47.5234	-92.5363	30-May-1999	29-Aug-2009	10
88101	Pm2.5 - Local	27	137	7550	1	WDSE	46.8183	-92.0894	06-May-1999	29-Aug-2009	10
88101	Pm2.5 - Local	27	137	7550	2	WDSE	46.8183	-92.0894	05-Jun-1999	29-Aug-2009	10
88101	Pm2.5 - Local	27	137	7551	1	Lincoln Pa	46.7664	-92.1335	01-Jan-2000	29-Aug-2009	10
88101	Pm2.5 - Local	39	009	0003	1	NULL	39.4425	-81.9086	03-Jan-1999	28-Sep-2009	11
88101	Pm2.5 - Local	39	017	0003	2	VERITY H	39.4936	-84.3539	01-Jan-2007	28-Sep-2009	3
88101	Pm2.5 - Local	39	017	0003	2	VERITY H	39.4936	-84.3539	01-Mar-2003	28-Sep-2009	7
88101	Pm2.5 - Local	39	017	0003	1	VERITY H	39.4936	-84.3539	01-Jan-1999	28-Sep-2009	11
88101	Pm2.5 - Local	39	017	0016	1	SACRED	39.3383	-84.5664	03-Oct-2000	28-Sep-2009	9
88101	Pm2.5 - Local	39	023	0005	1	ON THE F	39.9289	-83.8097	26-Jul-2000	31-Oct-2009	9
88101	Pm2.5 - Local	39	025	0022	1	CLERMO	39.0823	-84.1442	01-Jan-2005	28-Sep-2009	5
88101	Pm2.5 - Local	39	035	0027	1	P. L. DUN	41.4775	-81.7031	08-Jan-1999	06-Jul-2009	10
88101	Pm2.5 - Local	39	035	0034	1	6TH DIST	41.555	-81.575	11-Jul-2000	28-Sep-2009	9
88101	Pm2.5 - Local	39	035	0038	2	ST. THEC	41.4769	-81.6819	01-Jan-2008	22-Sep-2009	2
88101	Pm2.5 - Local	39	035	0038	1	ST. THEC	41.4769	-81.6819	08-Jan-1999	28-Sep-2009	11
88101	Pm2.5 - Local	39	035	0045	1	F.S. NO. 7	41.4717	-81.6572	14-Dec-1999	28-Sep-2009	10
88101	Pm2.5 - Local	39	035	0060	2	GT CRAIG	41.494	-81.6785	01-Jan-2007	18-Feb-2009	2
88101	Pm2.5 - Local	39	035	0060	2	GT CRAIG	41.494	-81.6785	01-Jan-2008	18-Feb-2009	1
88101	Pm2.5 - Local	39	035	0060	1	GT CRAIG	41.494	-81.6785	08-Jan-1999	28-Sep-2009	11
88101	Pm2.5 - Local	39	035	0060	1	GT CRAIG	41.494	-81.6785	01-Aug-2009	28-Sep-2009	0
88101	Pm2.5 - Local	39	035	0065	1	LOCATED	41.4464	-81.6619	29-Jan-1999	28-Sep-2009	11
88101	Pm2.5 - Local	39	035	1002	1	BROOKP	41.3956	-81.8181	08-Jan-1999	28-Sep-2009	11
88101	Pm2.5 - Local	39	049	0024	1	FAIRGRC	39.9983	-82.9931	01-Jan-1999	28-Sep-2009	11
88101	Pm2.5 - Local	39	049	0025	1	WOODRC	39.9281	-82.9811	01-Jan-1999	28-Sep-2009	11
88101	Pm2.5 - Local	39	049	0025	2	WOODRC	39.9281	-82.9811	01-Aug-2000	28-Sep-2009	9
88101	Pm2.5 - Local	39	049	0081	1	MAPLE C	40.0878	-82.9597	01-Jan-1999	28-Sep-2009	11
88101	Pm2.5 - Local	39	057	0005	1	SITE ATC	39.8081	-83.8869	03-Oct-2003	31-Oct-2009	6
88101	Pm2.5 - Local	39	061	0006	1	HAMILTO	39.2785	-84.366	01-Jan-2005	28-Sep-2009	5
88101	Pm2.5 - Local	39	061	0014	2	CARTHAQ	39.1942	-84.4789	01-Jan-2007	28-Sep-2009	3
88101	Pm2.5 - Local	39	061	0014	2	CARTHAQ	39.1942	-84.4789	01-Jan-2001	28-Sep-2009	9
88101	Pm2.5 - Local	39	061	0014	1	CARTHAQ	39.1942	-84.4789	01-Jan-1999	30-Sep-2009	11
88101	Pm2.5 - Local	39	061	0040	1	HC-DOES	39.1286	-84.5042	03-Apr-1999	28-Sep-2009	10
88101	Pm2.5 - Local	39	061	0042	1	F.S. NO. 7	39.105	-84.5511	03-Oct-2000	28-Sep-2009	9
88101	Pm2.5 - Local	39	061	7001	1	NORWOC	39.16	-84.4578	30-Jan-1999	28-Sep-2009	11
88101	Pm2.5 - Local	39	061	8001	1	NULL	39.1803	-84.4919	25-Mar-1999	28-Sep-2009	11
88101	Pm2.5 - Local	39	081	0017	1	NULL	40.3661	-80.615	01-Nov-2003	28-Sep-2009	6
88101	Pm2.5 - Local	39	081	1001	2	NULL	40.3219	-80.6064	01-Jan-2007	28-Sep-2009	3
88101	Pm2.5 - Local	39	081	1001	1	NULL	40.3219	-80.6064	11-Feb-1999	28-Sep-2009	11
88101	Pm2.5 - Local	39	085	0007	2	NULL	41.7268	-81.2422	01-Jan-2009	28-Sep-2009	1
88101	Pm2.5 - Local	39	085	0007	1	NULL	41.7268	-81.2422	01-Jan-2009	28-Sep-2009	1
88101	Pm2.5 - Local	39	087	0012	1	NULL	38.5081	-82.6593	12-Feb-2008	28-Sep-2009	2
88101	Pm2.5 - Local	39	093	3002	2	NULL	41.4631	-82.1144	27-May-2003	28-Sep-2009	6
88101	Pm2.5 - Local	39	093	3002	1	NULL	41.4631	-82.1144	05-Jan-2002	28-Sep-2009	8
88101	Pm2.5 - Local	39	095	0024	2	THIS SITE	41.6442	-83.5467	01-Jan-2007	28-Sep-2009	3
88101	Pm2.5 - Local	39	095	0024	1	THIS SITE	41.6442	-83.5467	11-Feb-1999	28-Sep-2009	11
88101	Pm2.5 - Local	39	095	0026	1	NEW PM2	41.6206	-83.6414	29-May-1999	28-Sep-2009	10
88101	Pm2.5 - Local	39	095	0028	1	NULL	41.6623	-83.478	24-Oct-2008	28-Sep-2009	1
88101	Pm2.5 - Local	39	099	0005	1	NULL	41.1111	-80.6453	01-Jan-1999	28-Sep-2009	11
88101	Pm2.5 - Local	39	099	0005	2	NULL	41.1111	-80.6453	01-Feb-2001	28-Sep-2009	9

88101	Pm2.5 - Local	39	099	0005	2	NULL	41.1111	-80.6453	01-Jan-2008	28-Sep-2009	2
88101	Pm2.5 - Local	39	099	0014	1	NULL	41.0959	-80.6584	05-Oct-2002	28-Sep-2009	7
88101	Pm2.5 - Local	39	103	0003	1	NULL	41.1028	-81.9117	01-Apr-2005	28-Sep-2009	4
88101	Pm2.5 - Local	39	113	0032	2	PM2.5 MC	39.7603	-84.1878	01-Aug-2001	28-Oct-2009	8
88101	Pm2.5 - Local	39	113	0032	1	PM2.5 MC	39.7603	-84.1878	01-Aug-2001	31-Oct-2009	8
88101	Pm2.5 - Local	39	133	0002	1	ROOF OF	41.1642	-81.235	30-Jan-1999	28-Sep-2009	11
88101	Pm2.5 - Local	39	135	1001	1	NULL	39.8356	-84.7208	21-Jan-1999	31-Oct-2009	11
88101	Pm2.5 - Local	39	145	0013	2	NULL	38.7542	-82.9175	01-Jan-2008	28-Sep-2009	2
88101	Pm2.5 - Local	39	145	0013	1	NULL	38.7542	-82.9175	15-Jan-1999	28-Sep-2009	11
88101	Pm2.5 - Local	39	151	0017	2	FIRE STA	40.7867	-81.3944	12-Jun-2001	28-Sep-2009	8
88101	Pm2.5 - Local	39	151	0017	1	FIRE STA	40.7867	-81.3944	03-Jan-1999	30-Sep-2009	11
88101	Pm2.5 - Local	39	151	0020	1	CANTON	40.8006	-81.3733	03-Jan-1999	28-Sep-2009	11
88101	Pm2.5 - Local	39	153	0017	2	NULL	41.0633	-81.4686	13-Mar-2000	25-Sep-2009	10
88101	Pm2.5 - Local	39	153	0017	1	NULL	41.0633	-81.4686	01-Jan-1999	30-Sep-2009	11
88101	Pm2.5 - Local	39	153	0023	1	ROOF OF	41.0881	-81.5417	01-Jan-1999	28-Sep-2009	11
88101	Pm2.5 - Local	39	165	0007	1	NULL	39.4278	-84.2022	01-Jan-2007	28-Sep-2009	3
88101	Pm2.5 - Local	55	003	0010	2	BAD RIVE	46.6146	-90.6987	01-Apr-2004	30-Sep-2009	5
88101	Pm2.5 - Local	55	003	0010	1	BAD RIVE	46.6146	-90.6987	25-Jul-2002	30-Sep-2009	7
88101	Pm2.5 - Local	55	009	0005	2	NULL	44.507	-87.993	01-Apr-2004	22-Sep-2009	5
88101	Pm2.5 - Local	55	009	0005	1	NULL	44.507	-87.993	01-Jan-1999	30-Sep-2009	11
88101	Pm2.5 - Local	55	025	0047	1	ON ROOF	43.0733	-89.4358	03-Jan-1999	30-Sep-2009	11
88101	Pm2.5 - Local	55	027	0007	1	MAYVILL	43.435	-88.5278	06-Jan-1999	28-Sep-2009	11
88101	Pm2.5 - Local	55	035	0100	1	NULL	44.812	-91.496	17-Mar-2009	28-Sep-2009	1
88101	Pm2.5 - Local	55	041	0007	1	NULL	45.565	-88.8086	01-Feb-2004	28-Sep-2009	6
88101	Pm2.5 - Local	55	041	0007	2	NULL	45.565	-88.8086	01-Oct-2005	28-Sep-2009	4
88101	Pm2.5 - Local	55	043	0009	1	PLATFOR	42.6922	-90.6864	06-Jan-1999	28-Sep-2009	11
88101	Pm2.5 - Local	55	059	0019	1	CHIWAUH	42.5047	-87.8093	25-Dec-1998	28-Sep-2009	11
88101	Pm2.5 - Local	55	059	0019	1	CHIWAUH	42.5047	-87.8093	04-Apr-1997	28-Sep-2009	12
88101	Pm2.5 - Local	55	063	0012	1	NULL	43.778	-91.225	07-Dec-2005	28-Sep-2009	4
88101	Pm2.5 - Local	55	071	0007	1	MANITOV	44.1386	-87.6161	01-Jan-1999	28-Sep-2009	11
88101	Pm2.5 - Local	55	079	0010	2	HEALTH C	43.0167	-87.9333	01-Jan-1999	28-Sep-2009	11
88101	Pm2.5 - Local	55	079	0026	2	DNR SER	43.0611	-87.9125	01-Apr-2004	22-Sep-2009	5
88101	Pm2.5 - Local	55	079	0026	1	DNR SER	43.0611	-87.9125	01-Jan-1999	28-Sep-2009	11
88101	Pm2.5 - Local	55	079	0043	1	STAND O	43.0264	-87.9111	12-Jan-1999	28-Sep-2009	11
88101	Pm2.5 - Local	55	079	0059	2	FENCED-	42.955	-87.9342	25-Dec-1998	28-Sep-2009	11
88101	Pm2.5 - Local	55	079	0059	2	FENCED-	42.955	-87.9342	01-Apr-2003	28-Sep-2009	6
88101	Pm2.5 - Local	55	079	0099	1	ON ROOF	43.0397	-87.9206	05-Feb-1999	28-Sep-2009	11
88101	Pm2.5 - Local	55	087	0009	1	MOBILE S	44.3069	-88.3956	01-Jan-1999	30-Sep-2009	11
88101	Pm2.5 - Local	55	089	0009	1	COORDIN	43.4981	-87.81	23-Jun-2003	28-Sep-2009	6
88101	Pm2.5 - Local	55	109	1002	1	SHELTER	45.1244	-92.6625	01-Sep-2004	28-Sep-2009	5
88101	Pm2.5 - Local	55	109	1002	1	SHELTER	45.1244	-92.6625	01-Jan-1999	28-Sep-2009	11
88101	Pm2.5 - Local	55	111	0007	2	DEVILS L	43.4356	-89.6803	01-Apr-2004	22-Sep-2009	5
88101	Pm2.5 - Local	55	111	0007	1	DEVILS L	43.4356	-89.6803	09-May-2003	28-Sep-2009	6
88101	Pm2.5 - Local	55	119	8001	1	NULL	45.2039	-90.6	03-May-2003	28-Sep-2009	6
88101	Pm2.5 - Local	55	125	0001	1	TROUT L	46.0481	-89.6536	01-Jan-1999	28-Sep-2009	11
88101	Pm2.5 - Local	55	133	0027	2	CLEVELA	43.0203	-88.215	01-Jan-1999	28-Sep-2009	11

IMPROVE									
Site	Code	Dataset	State	StateFIPS	County	CountyFIPS	StartDate	EndDate	Years
Bondville	BOND1	IMPFSPED	IL	17	Champaign	019	03/05/2001		8
Chicago	CHIC1	IMPFSPED	IL	17			11/11/2003		6
Livonia	LIVO1	IMPFSPED	IN	18	Washington	175	03/06/2001		8
Seney	SENE1	IMPFSPED	MI	26	Schoolcraft	153	11/16/1999		10
Isle Royale	ISLE1	IMPFSPED	MI	26	Keweenaw	083	11/16/1999		10
Isle Royale	ISRO1	IMPFSPED	MI	26	Keweenaw	083	06/01/1988	07/27/1991	3
Detroit	DETR1	IMPFSPED	MI	26			11/08/2003		6
Quaker City	QUCI1	IMPFSPED	OH	39	Guernsey	059	05/02/2001		8
Boundary View	BOWA1	IMPFSPED	MN	27	Cook County	031	08/14/1991		18
Voyageurs	VOYA1	IMPFSPED	MN	27	St. Louis Co	137	03/02/1988	09/28/1996	8
Great River	GRR11	IMPFSPED	MN	27			07/25/2002		7
Blue Mountain	BLMO1	IMPFSPED	MN	27			07/25/2002		7
Voyageurs	VOYA2	IMPFSPED	MN	27	St. Louis Co	137	11/16/1999		10
CSN									
Site	Code	Dataset	State	StateFIPS	County	CountyFIPS	StartDate	EndDate	Years
1700 ANNE	171192009	EPAPM25S	IL	17	Madison Co	119	10/16/2001	9/3/2007	6
750 DUNDI	170314201	EPAPM25S	IL	17	Cook County	031	10/11/2002		7
103RD AN	170310050	EPAPM25S	IL	17	Cook County	031	2/9/2000	1/22/2001	1
2200 N. 22	171150013	EPAPM25S	IL	17	Macon Cou	115	1/9/2003	12/26/2007	4
1745 N. SP	170310057	EPAPM25S	IL	17	Cook County	031	3/26/2001		8
7801 LAW	170310076	EPAPM25S	IL	17	Cook County	031	5/22/2001		8
400 S. EAG	170434002	EPAPM25S	IL	17	DuPage Co	043	1/16/2004		5
2100 MAD	171190024	EPAPM25S	IL	17	Madison Co	119	10/3/2007		2
1000 E. AN	181411008	EPAPM25S	IN	18	St. Joseph	141	1/4/2004	12/29/2004	0
425 WEST	181630012	EPAPM25S	IN	18	Vanderbur	163	10/5/2002		7
201 MISSI	180890022	EPAPM25S	IN	18	Lake Count	089	4/3/2003		6
3120 E. 30	180970078	EPAPM25S	IN	18	Marion Cou	097	12/20/2000		9
2022 NORT	180030004	EPAPM25S	IN	18	Allen Coun	003	4/3/2003	12/29/2004	1
7354 W. U	180650003	EPAPM25S	IN	18	Henry Cou	065	2/1/2002		7
PURDUE U	180892004	EPAPM25S	IN	18	Lake Count	089	1/4/2004		5
200 W 6TH	180372001	EPAPM25S	IN	18	Dubois Cou	037	1/4/2005		4
PIERRE MC	180390003	EPAPM25S	IN	18	Elkhart Cou	039	1/4/2005	12/26/2007	2
555 TOWN	261610008	EPAPM25S	MI	26	Washtenav	161	6/26/2003	6/17/2008	5
14700 GO	261630001	EPAPM25S	MI	26	Wayne Cou	163	12/14/2000		9
1769 S JEFF	261130001	EPAPM25S	MI	26	Missaukee	113	1/11/2002		7
3229 EAST	261150005	EPAPM25S	MI	26	Monroe Co	115	5/2/2002		7
27542 NOR	261250010	EPAPM25S	MI	26	Oakland Co	125	3/2/2001	4/26/2002	1
2842 WYO	261630033	EPAPM25S	MI	26	Wayne Cou	163	5/2/2002		7
966 W 32N	260050003	EPAPM25S	MI	26	Allegan Cou	005	2/8/2003	4/5/2006	3
1179 MON	260810020	EPAPM25S	MI	26	Kent Count	081	6/1/2002		7
11600 EAS	261630019	EPAPM25S	MI	26	Wayne Cou	163	12/14/2000	4/26/2002	2
FAIRGROU	260770008	EPAPM25S	MI	26	Kalamazoo	077	2/8/2003	6/17/2008	5
LK SUPERIO	260330901	EPAPM25S	MI	26	Chippewa	033	8/17/2001	4/29/2006	5
SENEY NAT	261530001	EPAPM25S	MI	26	Schoolcraft	153	01/01/2001	1/31/2003	2
1540 EAST	271230871	EPAPM25S	MN	27	Ramsey Co	123	9/22/2001	3/29/2005	4
2727 10th	270530963	EPAPM25S	MN	27	Hennepin	053	1/31/2001		8
HCR 67 BO	270953051	EPAPM25S	MN	27	Mille Lacs	095	9/8/2002	7/30/2005	3

1801 9th A	271095008	EPAPM25S	MN	27	Olmsted Co	109	9/22/2001		8
420 MARK	391510020	EPAPM25S	OH	39	Stark Coun	151	2/13/2002	7/29/2008	6
660 W. EXC	391530023	EPAPM25S	OH	39	Summit Co	153	11/21/2001		8
1330 DUEB	391510017	EPAPM25S	OH	39	Stark Coun	151	1/6/2005		4
4208 AIRPO	390950026	EPAPM25S	OH	39	Lucas Coun	095	2/1/2002		7
5750 MAPL	390490081	EPAPM25S	OH	39	Franklin Co	049	2/1/2002		7
2128 S. 9TH	390870010	EPAPM25S	OH	39	Lawrence Co	087	2/13/2002	2/6/2008	6
2547 ST TH	390350038	EPAPM25S	OH	39	Cuyahoga Co	035	1/8/2002		7
2180 LAKE	390933002	EPAPM25S	OH	39	Lorain Cou	093	2/1/2002		7
E. 14TH & C	390350060	EPAPM25S	OH	39	Cuyahoga Co	035	12/26/2000		9
214 E. 34TH	390930016	EPAPM25S	OH	39	Lorain Cou	093	1/4/2005	12/24/2005	0
1361 HUFF	391130031	EPAPM25S	OH	39	Montgome	113	10/16/2001	12/31/2006	5
HOOK FIEL	390171004	EPAPM25S	OH	39	Butler Cou	017	11/21/2001		8
250 WM. H	390610040	EPAPM25S	OH	39	Hamilton Co	061	11/21/2001		8
2101 W. 8TH	390610042	EPAPM25S	OH	39	Hamilton Co	061	8/6/2002	11/29/2003	1
8323 STAT	390530003	EPAPM25S	OH	39	Gallia Cour	053	02/01/2002	7/20/2004	2
345 OAKHI	390990014	EPAPM25S	OH	39	Mahoning	099	2/13/2002		7
618 LOGAN	390810017	EPAPM25S	OH	39	Jefferson Co	081	8/1/2004	4/24/2007	3
MAYVILLE,	550270007	EPAPM25S	WI	55	Dodge Cou	027	9/22/2001		8
CHIWAUKEE	550590019	EPAPM25S	WI	55	Kenosha Co	059	2/1/2002	1/5/2006	4
MANITOW	550710007	EPAPM25S	WI	55	Manitowoc	071	1/3/2002	1/22/2005	3
DNR SER H	550790026	EPAPM25S	WI	55	Milwaukee	079	12/14/2000		9
1 MI E. PER	551198001	EPAPM25S	WI	55	Taylor Cou	119	12/15/2001		8
1310 CLEVI	551330027	EPAPM25S	WI	55	Waukesha	133	1/8/2002		7