



Building Blocks for the National Air Toxics Trends System –

Chicago Workshop May 13



Introduction

- Planning and Design
- Implementation
- Maintenance



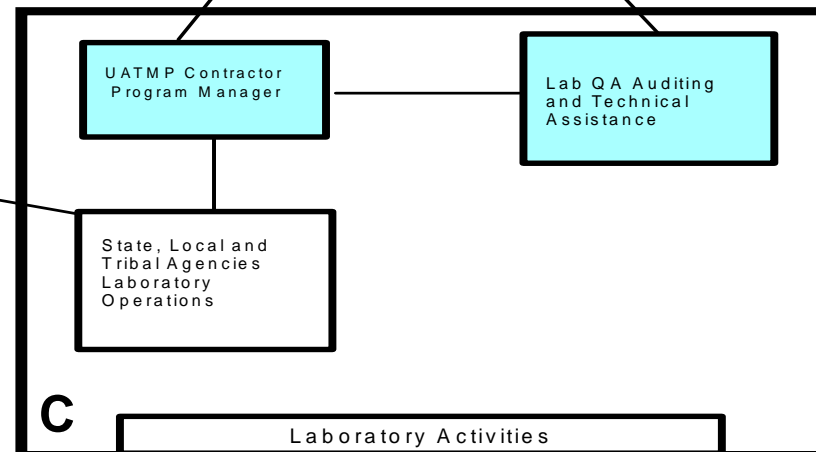
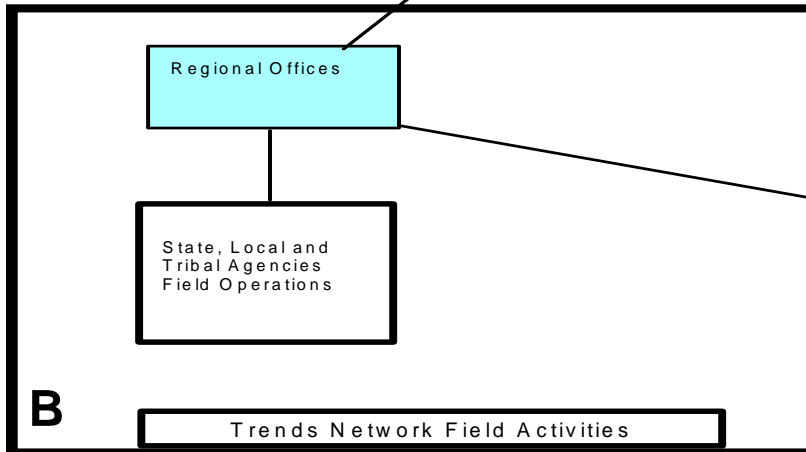
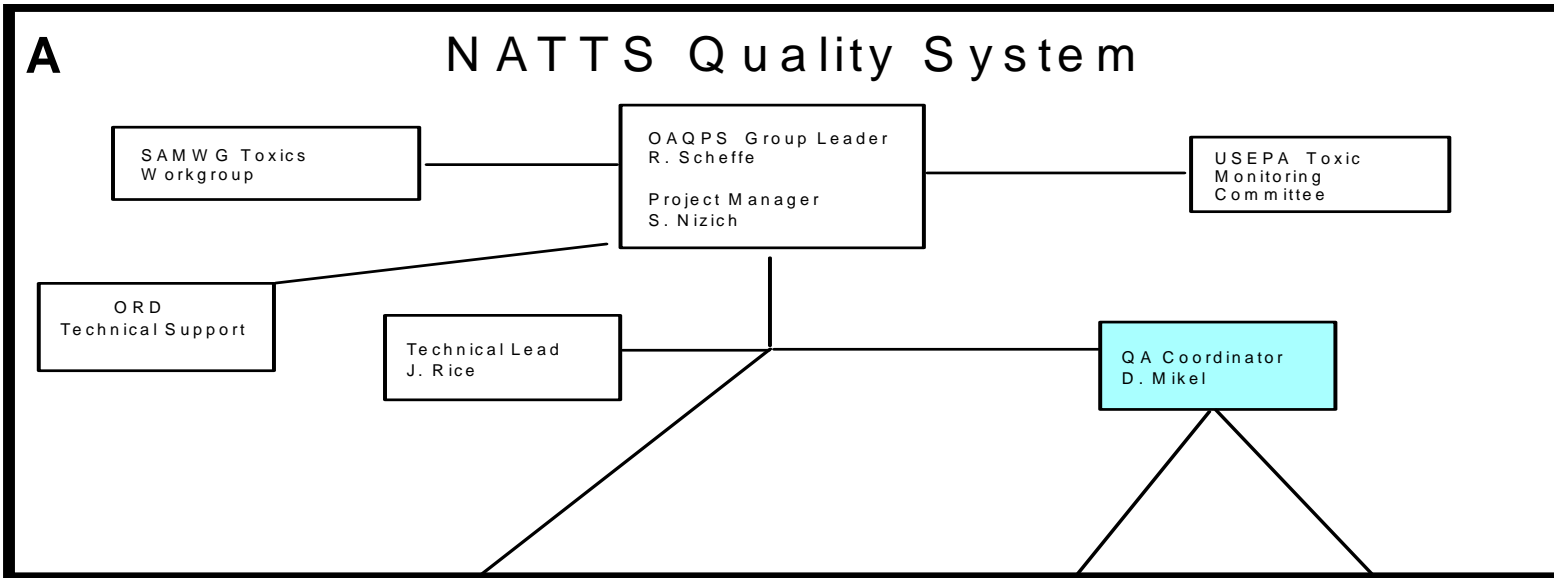
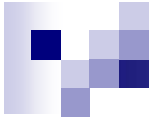
Planning and Design


- Monitor for 6 NATA risk drivers
 - Benzene, acrolein, formaldehyde, chromium
 - Two added this year due to national concern: 1-3 butadiene and arsenic.
- Develop a Technical Assistance Document for new network (final Fall 2003)
- National ongoing training for data input to Air Quality System – quarterly reporting.
- Develop a national QA program –



Quality Assurance System - NATTS

- Roll out – FY 2004
- Integrated approach – S/L/T agencies, Regions, UATMP contractor and Support Lab/Contractor
- Plan calls for annual (?) PE and “Round Robin” samples to all labs to estimate lab accuracy and bias.
- Precision by collocation and replicate sampling



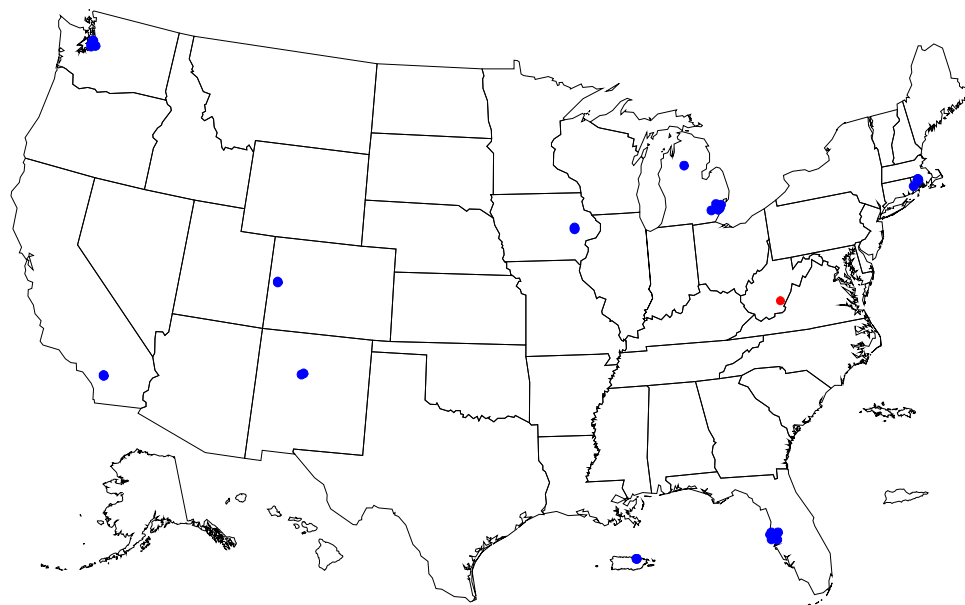


Quality Assurance System – NATTS- DRAFT ESTIMATES:

- Annual Costs (Sec. 103 Tap) – (Technical System Audits) -- \$132K
- Annual Costs (Sec. 103 Tap) PE and round robins sampling -- \$43K
- OAQPS check of national lab with annual QA report -- \$35k
- Please see QA System description summary for details
- Contact Dennis Mikel – QA Coordinator

Mikel.dennisk@epa.gov, 919-541-5511

Toxics Monitoring Locations



Pilot Sites

38 sites in 10 cities

- Barcelenta/San Juan, PR
- Providence, RI
- Keeney Knob, WV *no data
- Tampa, FL
- Detroit, MI
- Rio Rancho, NM
- Cedar Rapids, IA
- San Jacinto, CA
- Grand Junction, CO
- Seattle, WA

NATTS Sites

22 'areas':

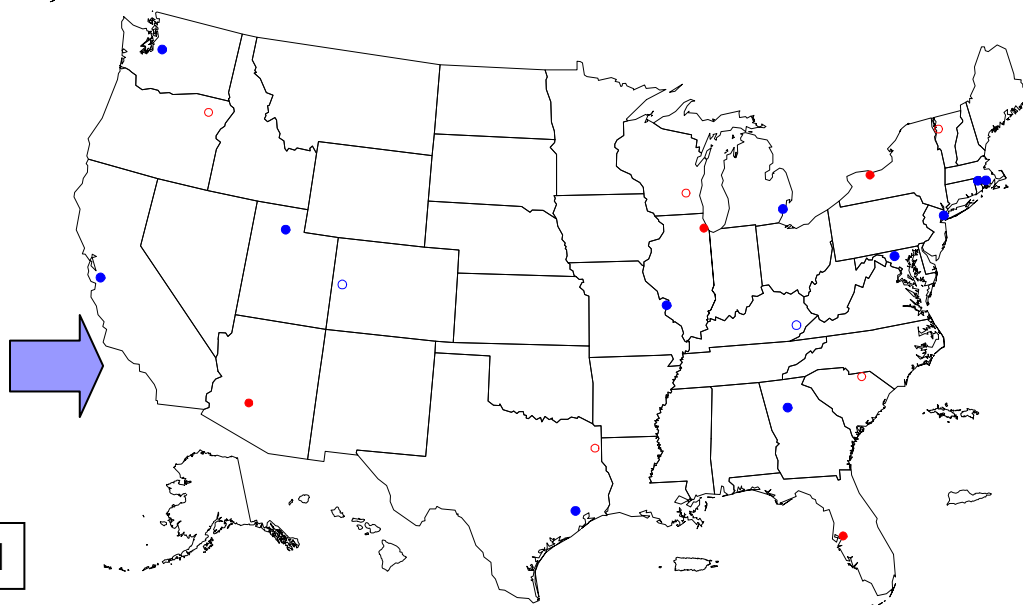
Jan/03 Startup (13)

- Providence RI
- Roxbury MA
- NY, NY
- Washington DC
- Decatur (Atlanta), GA
- Hazard, KY (Rural)
- Detroit, MI
- Deer Park (Houston), TX
- St. Louis MO
- Bountiful UT
- Grand Junction, CO (Rural)
- San Jose CA
- Seattle WA

Jan/04 Startup (9)

- Chittenden County, VT (Rural)
- Rochester, NY
- Tampa, FL
- Chesterfield, SC (Rural)
- Chicago, IL
- Mayville WI
- Harrison County TX (Rural)
- Phoenix AZ
- La Grande, OR (Rural)

● Urban ○ Rural





Implementation

- Provide improved methods through Office of Research and Development
- Training, manuals, workgroups
- Data analysis workshop on lessons learned (annual event?)
- Expand NATTS community
 - grants, methods experts,
 - lab and field managers
 - community-level projects-leveraging resources
 - tribal



Maintenance

- \$100,000 per year, per site granted
- New methods tested (DNSH, passive samplers, mobile units)
- National QA program-PE program
- Data Analysis/model evaluation – 10 percent spent per year minimum.
- Expand network/sampling frequencies/community projects as resources allow.



Next Steps

■ FY03 Activities

- This workshop- CD distributed by Battelle-
- Expand data analysis –model to monitor work
- Region 5 Community Scale Project
 - Use passive samplers, other techniques.
 - Source apportionment at city-level
 - Develop plan to extrapolate program to other communities
- Methods Workshop
- Development/Support of 22 NATTS sites
- Website to provide states/EPA standard analysis products.



Next Steps – cont'd

■ FY04 Activities

- Continued base for 22 NATTS sites and ongoing data analysis.
- \$7 million allocated for possible other activities:
 - Comprehensive model-to-monitor analyses and QA program,
 - More trends and community assessment sites,
 - Adding more pollutants and possible mercury monitoring,
 - Exploring risk and exposure assessments,
- Need to balance large projects with reality of funding.



Need Your Input

- Send comments on Fy2004 grant guidance via email by May 30 to:

Sharon Nizich

nizich.sharon@epa.gov

919/541-2825