

Ozone Update 2007

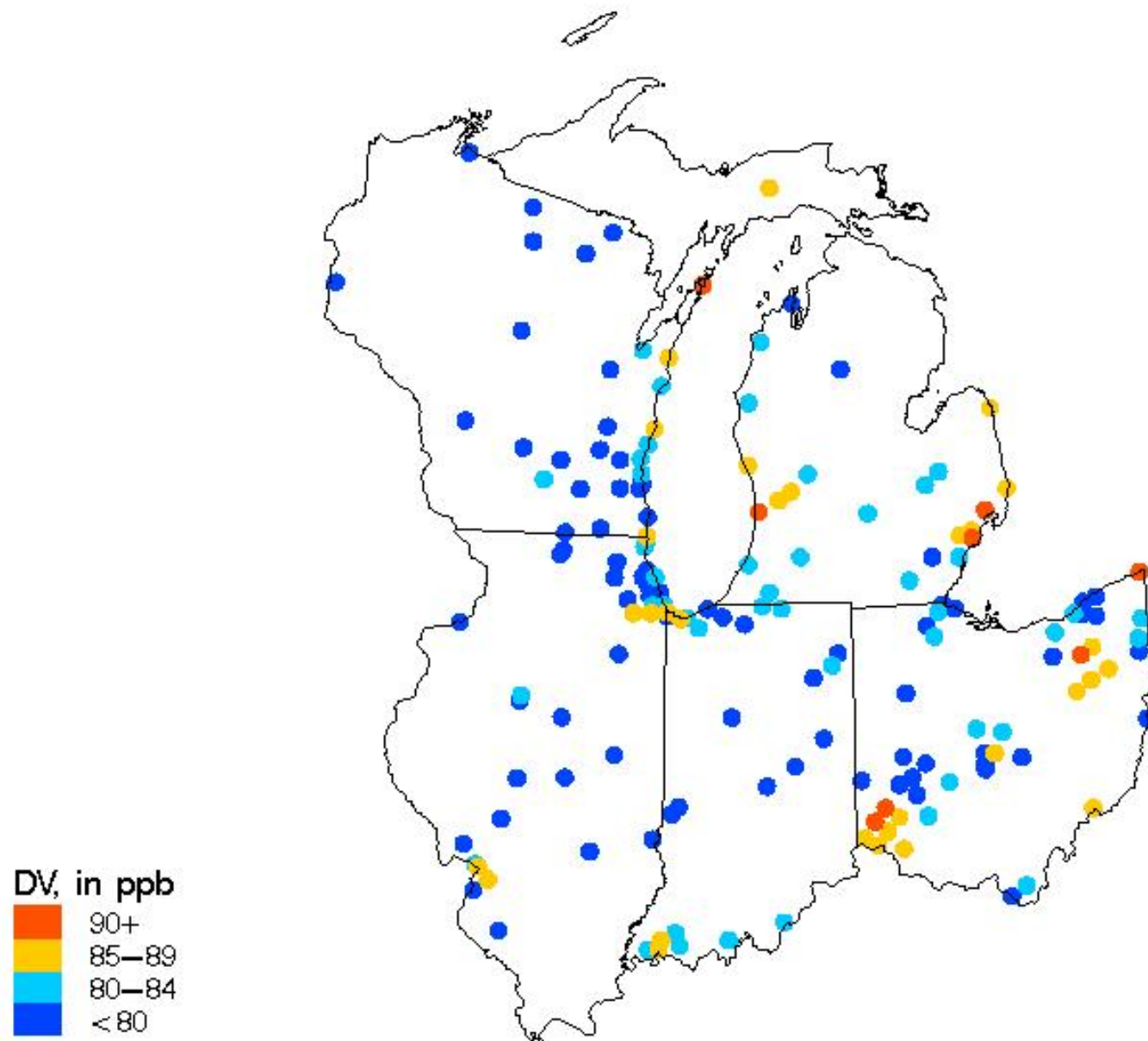
Caveats: data thru 9/30/07 only; not a complete ozone or met year.
Ozone and met data are preliminary, not final QA'ed version. Not all
ozone sites included in 2007

Donna Kenski

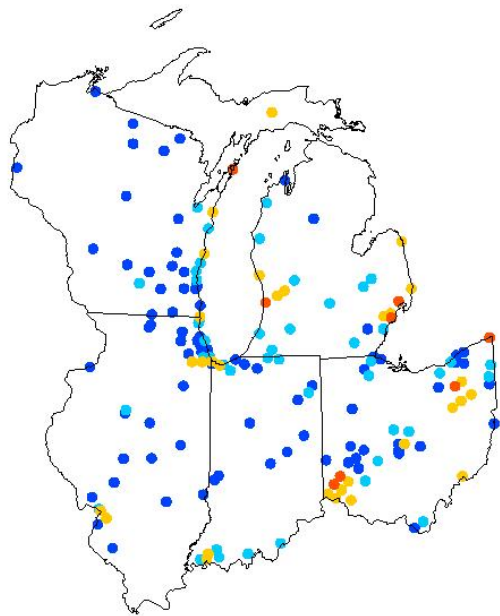
Oct 10 2007

Regional Air Quality Meeting

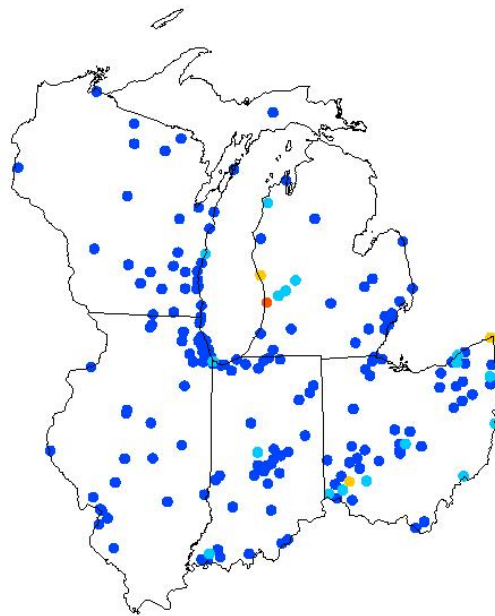
Ozone Fourth High Values, 2007



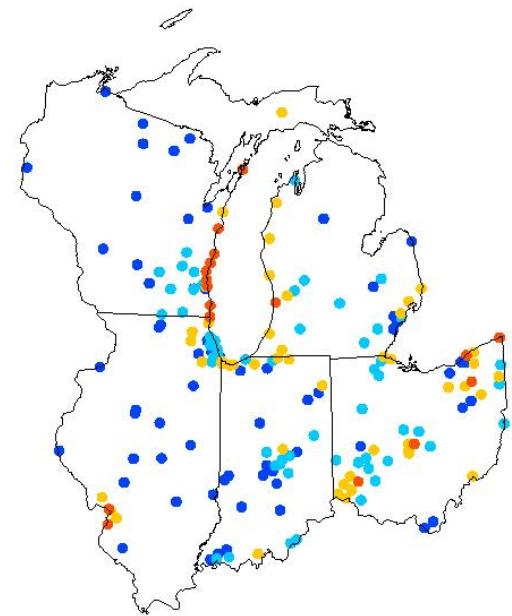
Ozone Fourth High Values, 2007



Ozone Fourth High Values, 2006

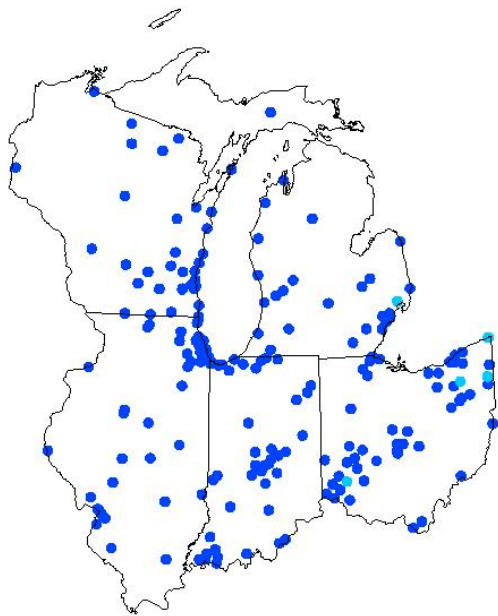


Ozone Fourth High Values, 2005

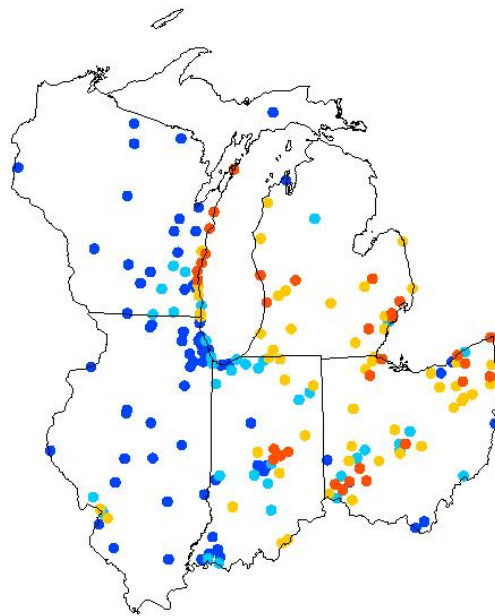


DV, in ppb
90+
85-89
80-84
<80

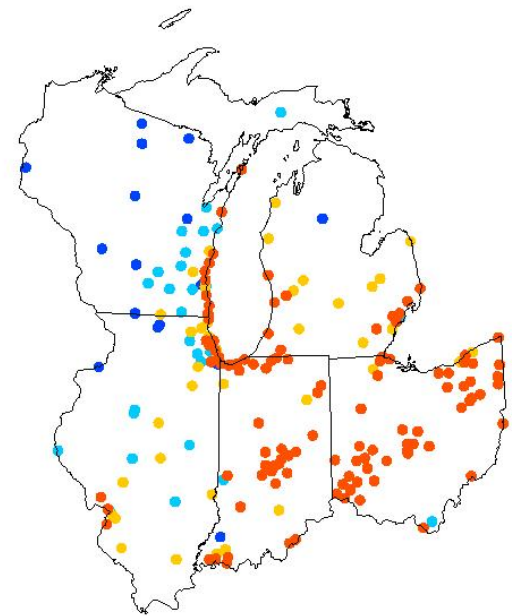
Ozone Fourth High Values, 2004



Ozone Fourth High Values, 2003

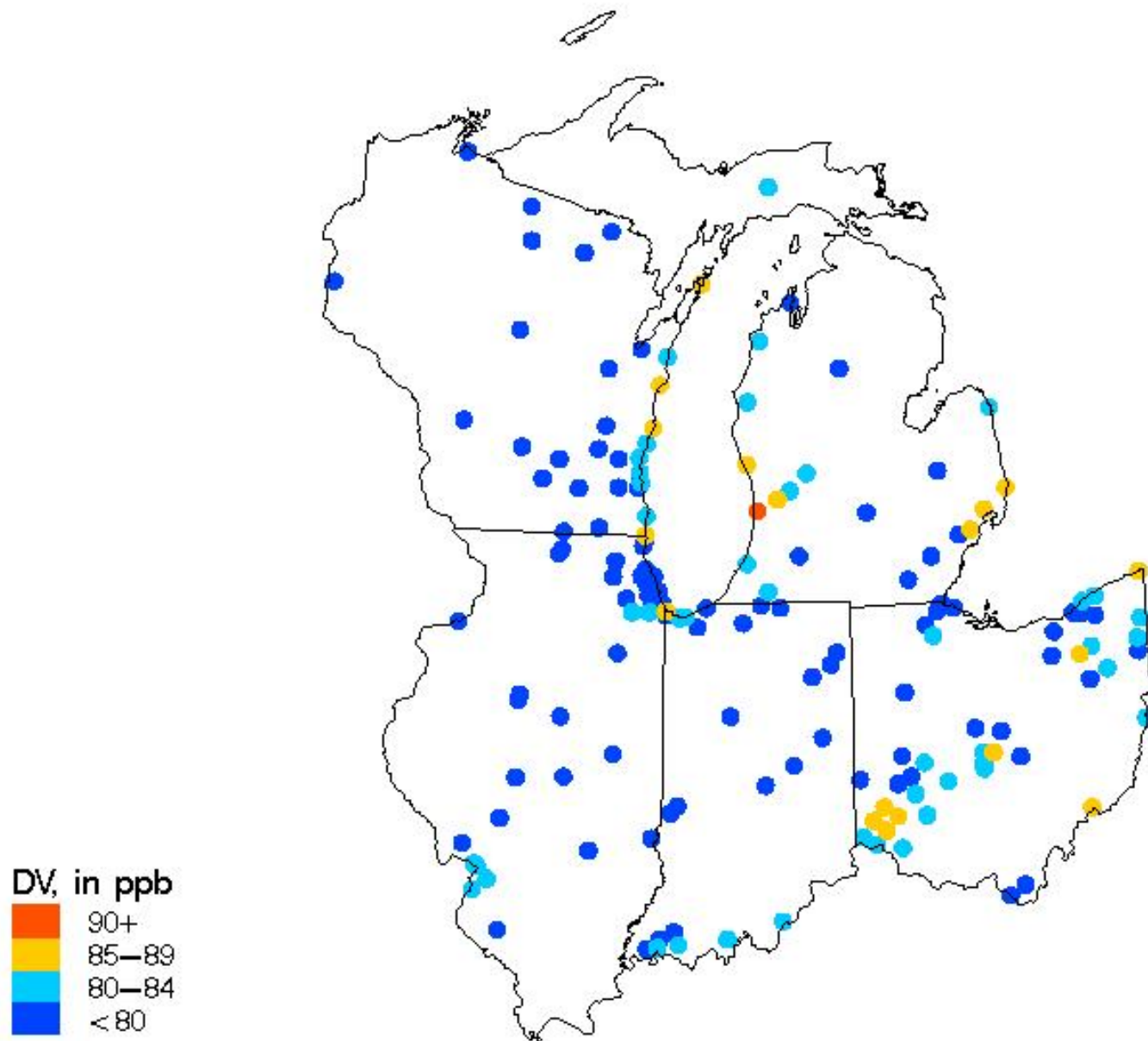


Ozone Fourth High Values, 2002

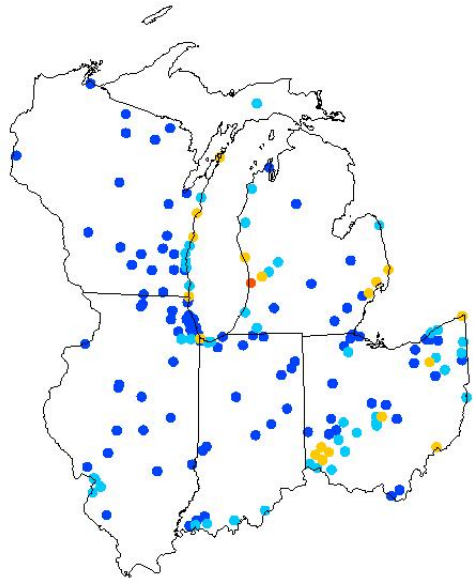


DV, in ppb
90+
85-89
80-84
<80

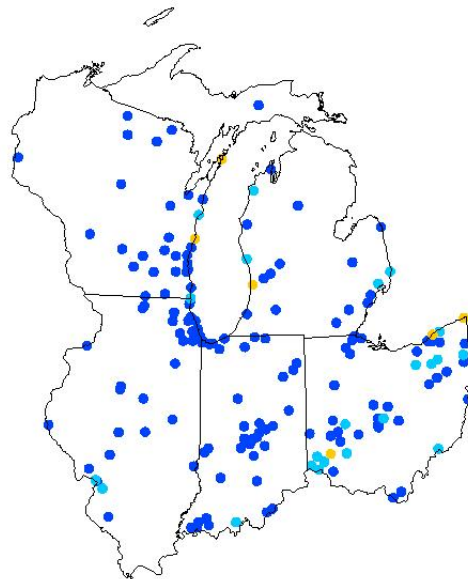
Ozone Design Values, 2005_2007



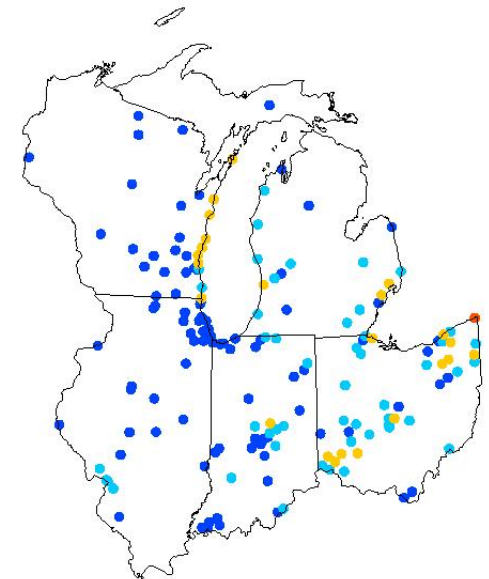
Ozone Design Values, 2005_2007



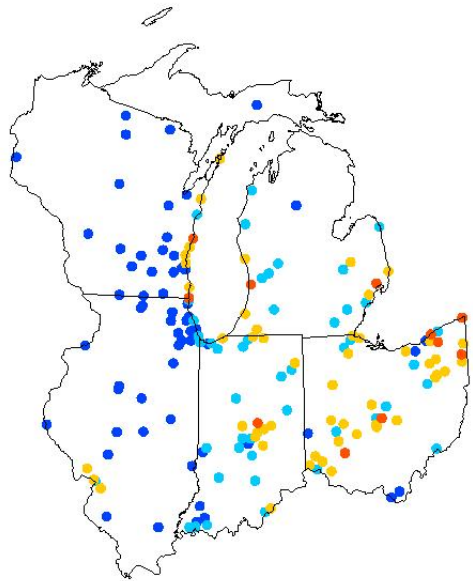
Ozone Design Values, 2004_2006



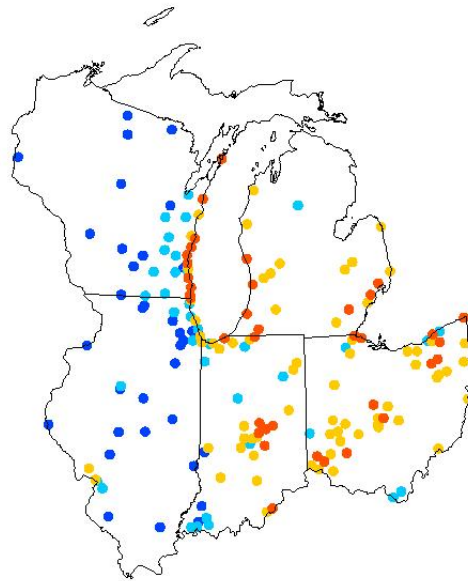
Ozone Design Values, 2003_2005



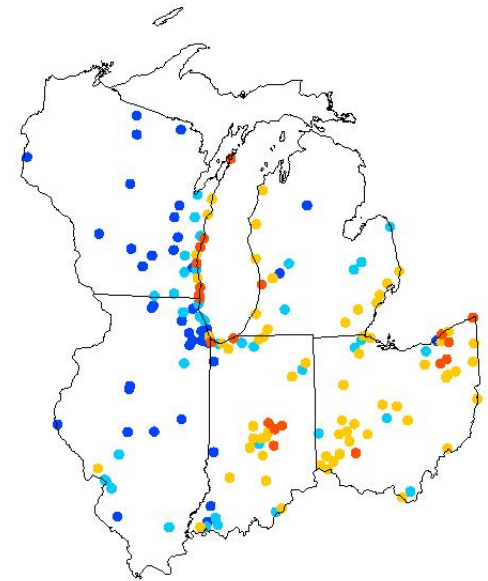
Ozone Design Values, 2002_2004



Ozone Design Values, 2001_2003



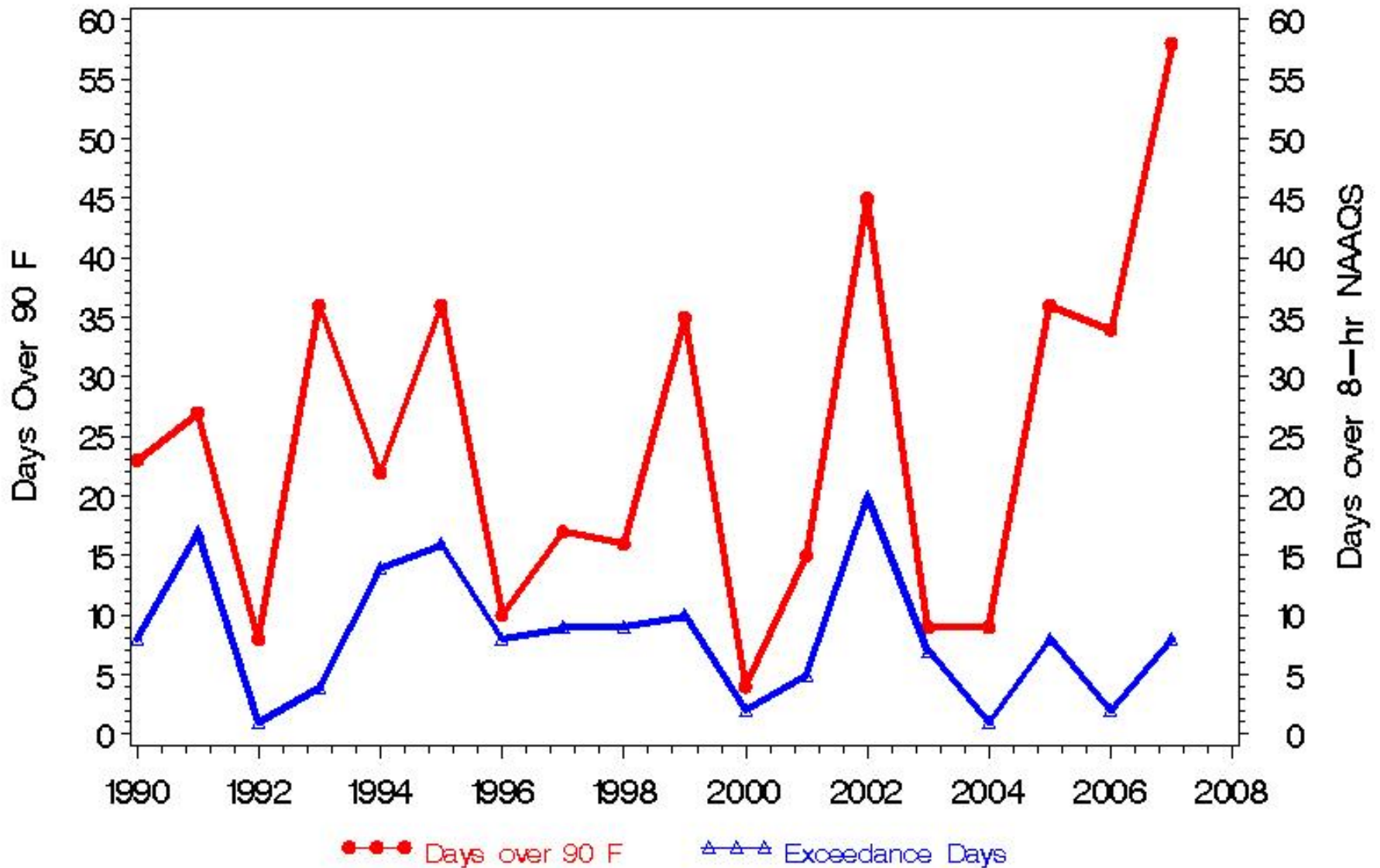
Ozone Design Values, 2000_2002



DV, in ppb
90+
85-89
80-84
< 80

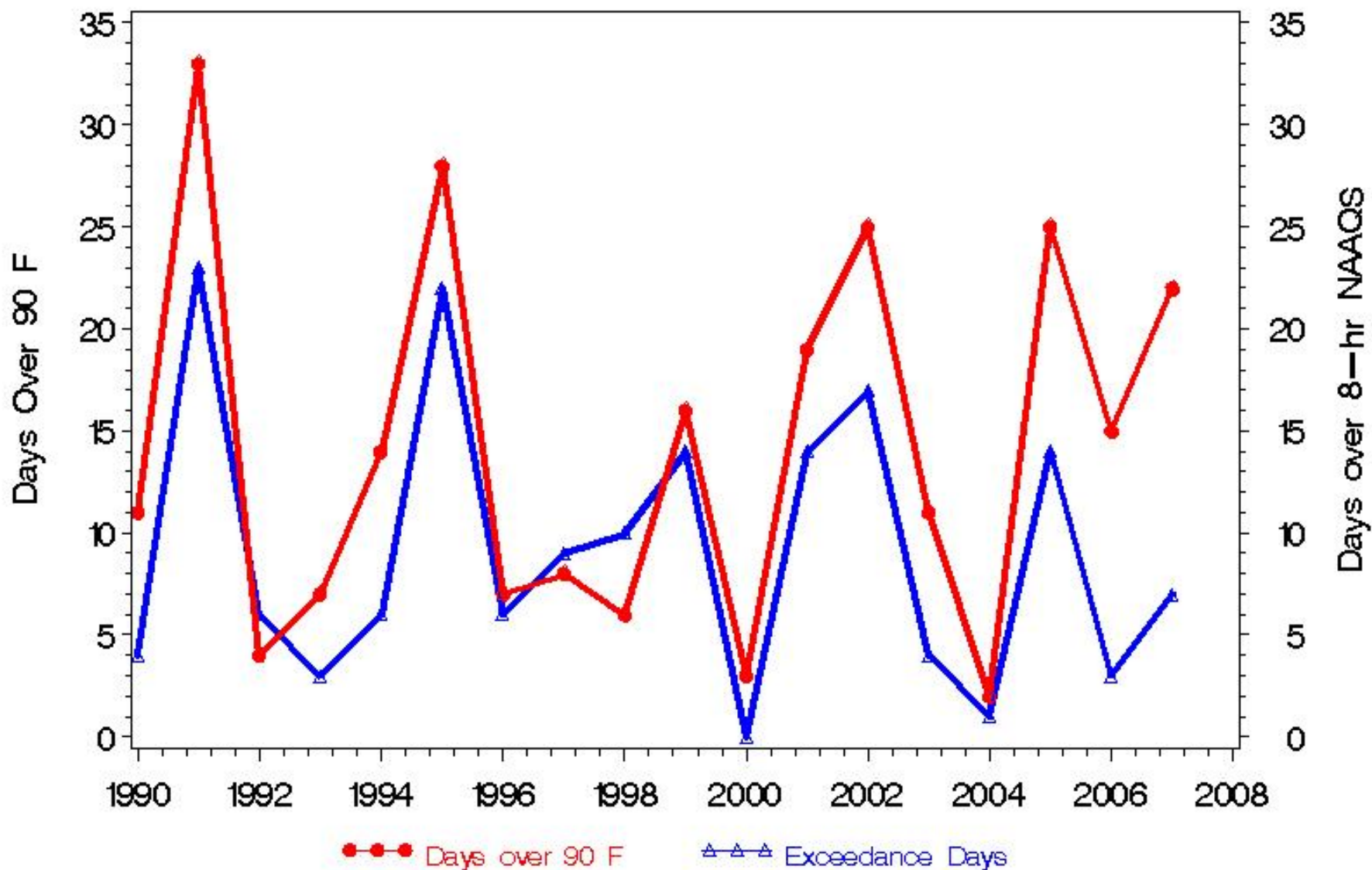
DV, in ppb
90+
85-89
80-84
< 80

Cincinnati Area Sites



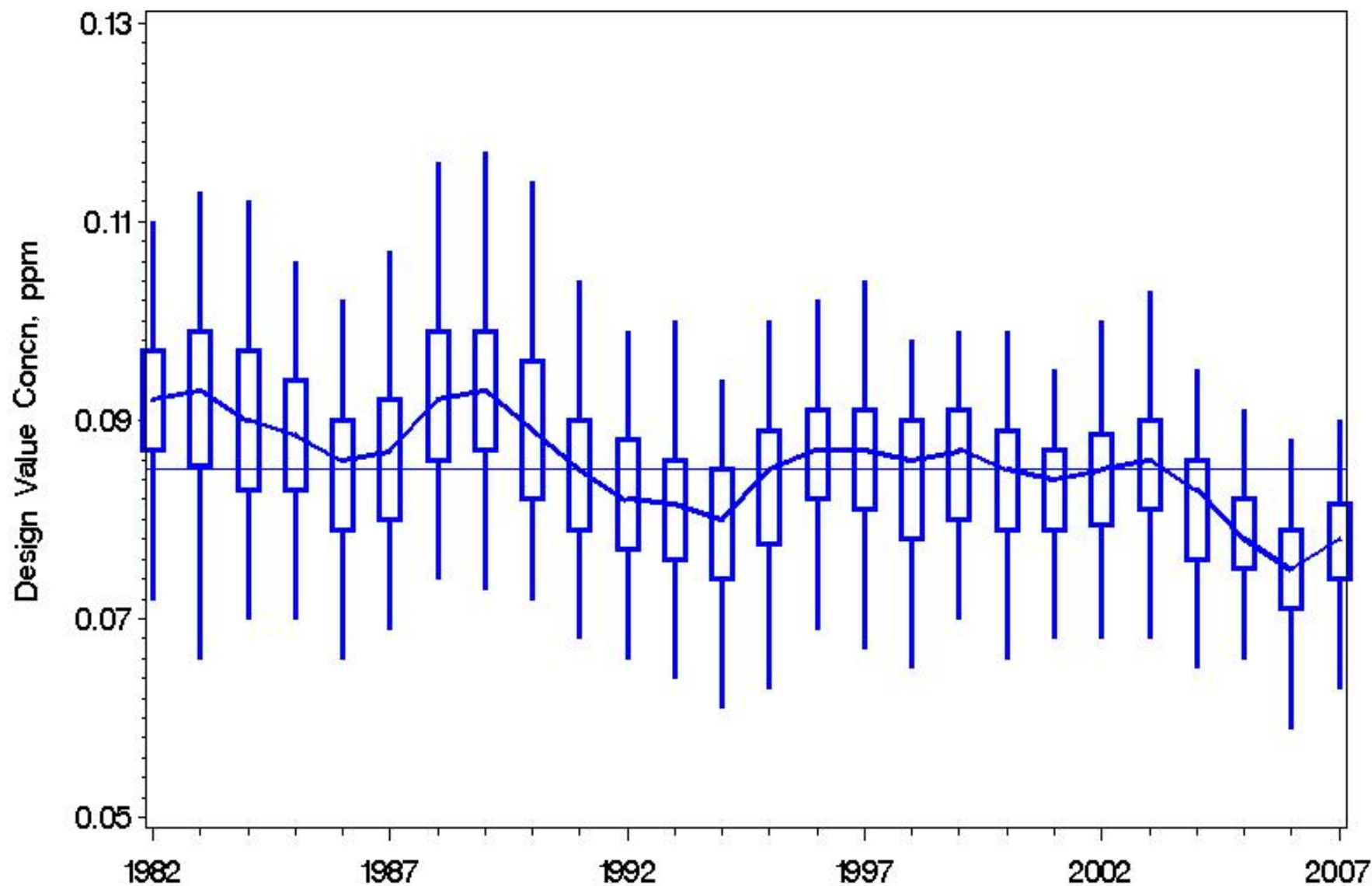
Weather data for Lunken Airport. Exceedance days are total unique days for monitors with 1990–2007 data.

Chicago Area Sites



Weather data for O'Hare International Airport. Exceedance days are total unique days for monitors with 1990–2007 data.

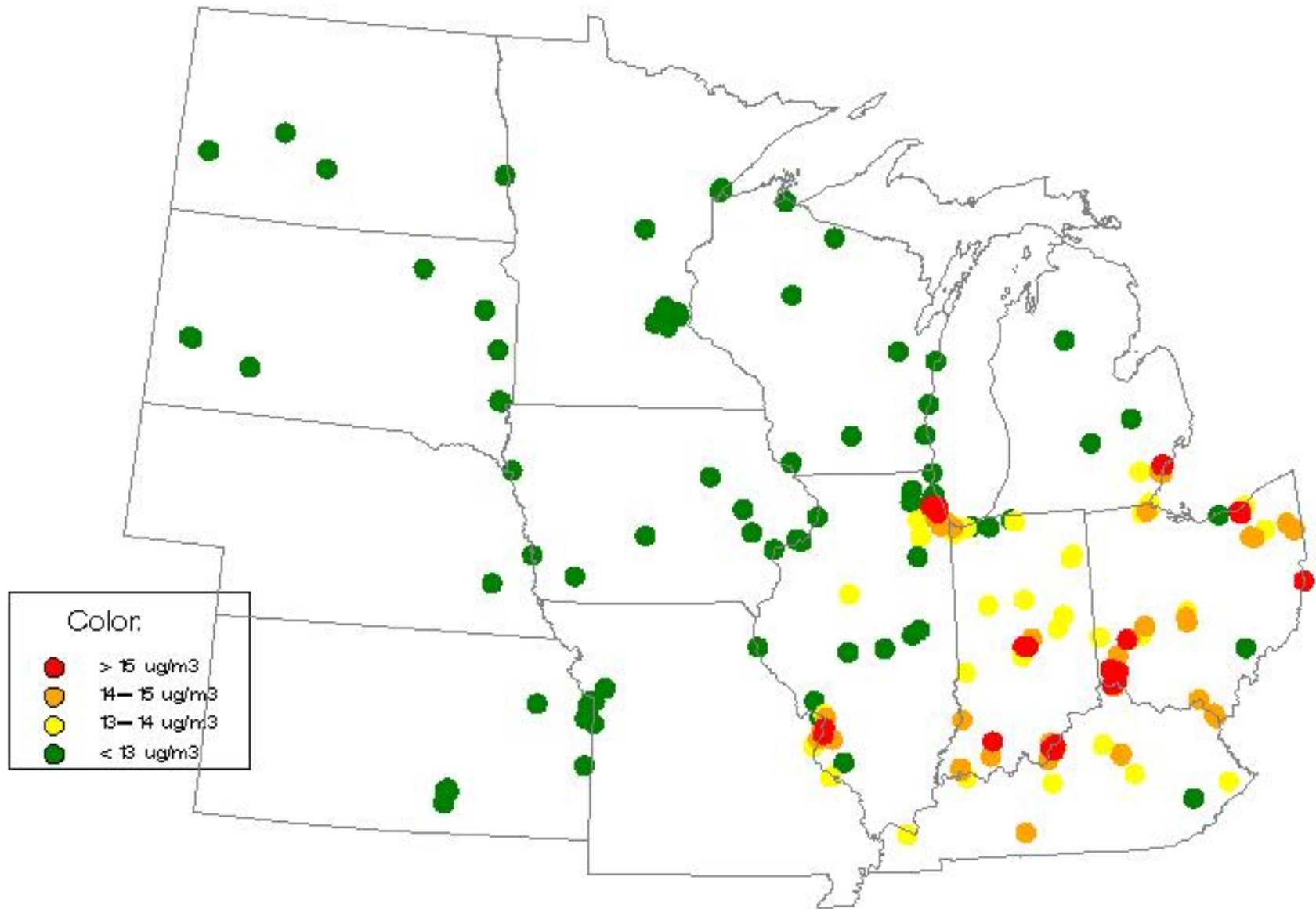
Design Value Trends, LADCO States



Design value plotted by end year of 3-year period. 2007 data are preliminary.

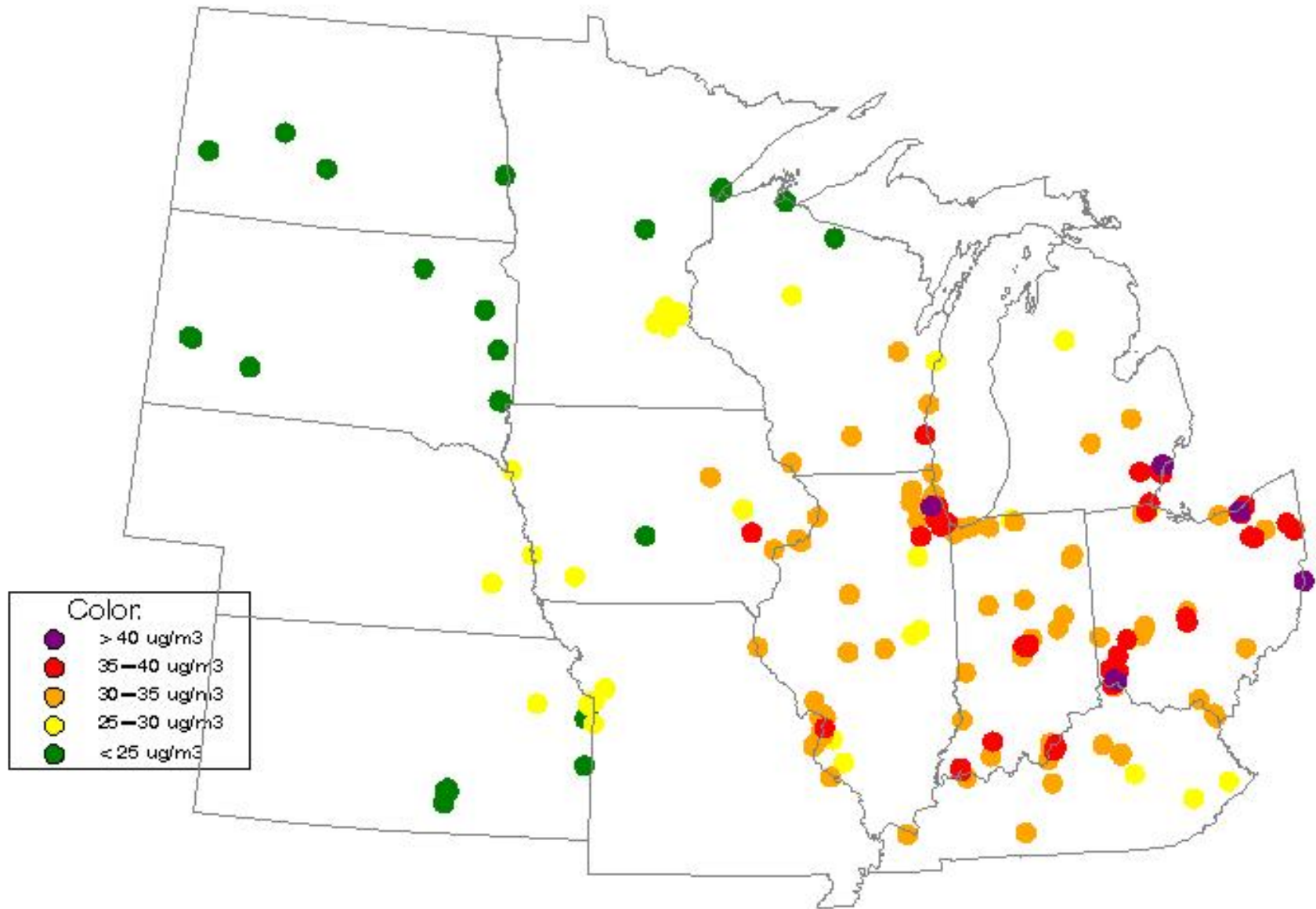
PM2.5 FRM Mean Concentration, 2004–2006

Preliminary Data -- Not Official!
Includes some sites with incomplete data

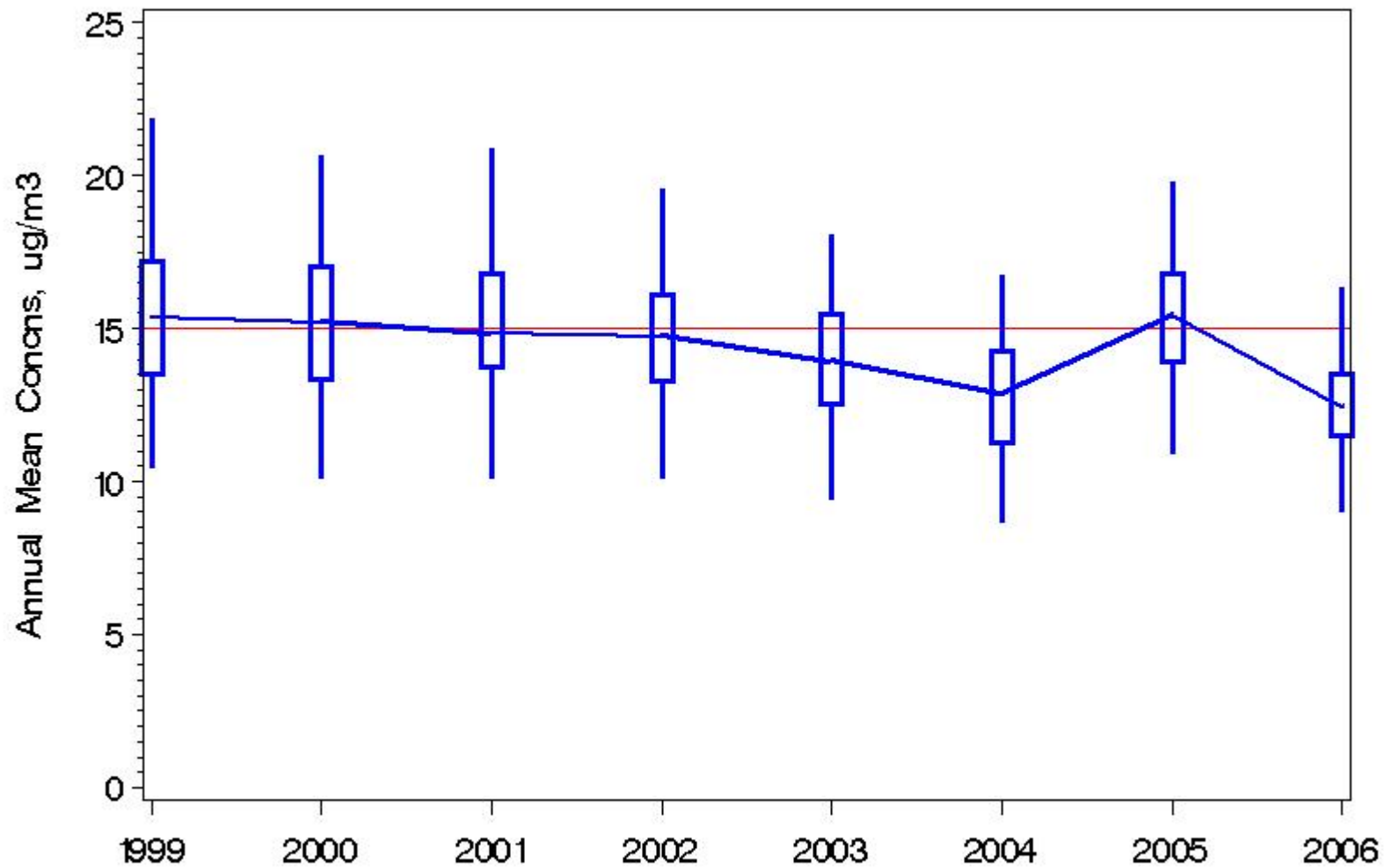


PM2.5 FRM 98th Percentile Concentration, 2004–2006

Preliminary Data — Not Official!
Includes some sites with incomplete data

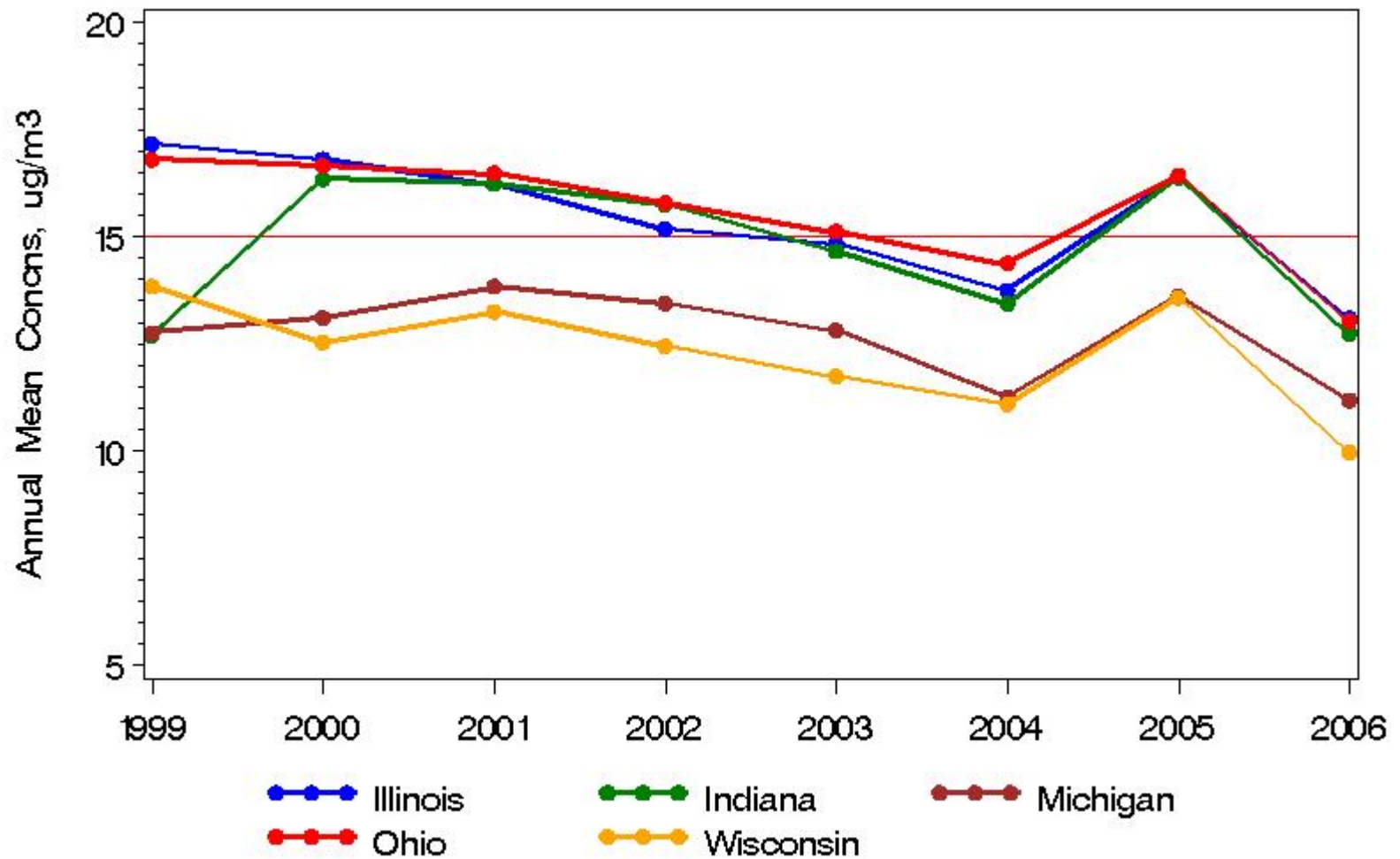


PM2.5 Annual Mean Trends, Midwest States, 1999—2006



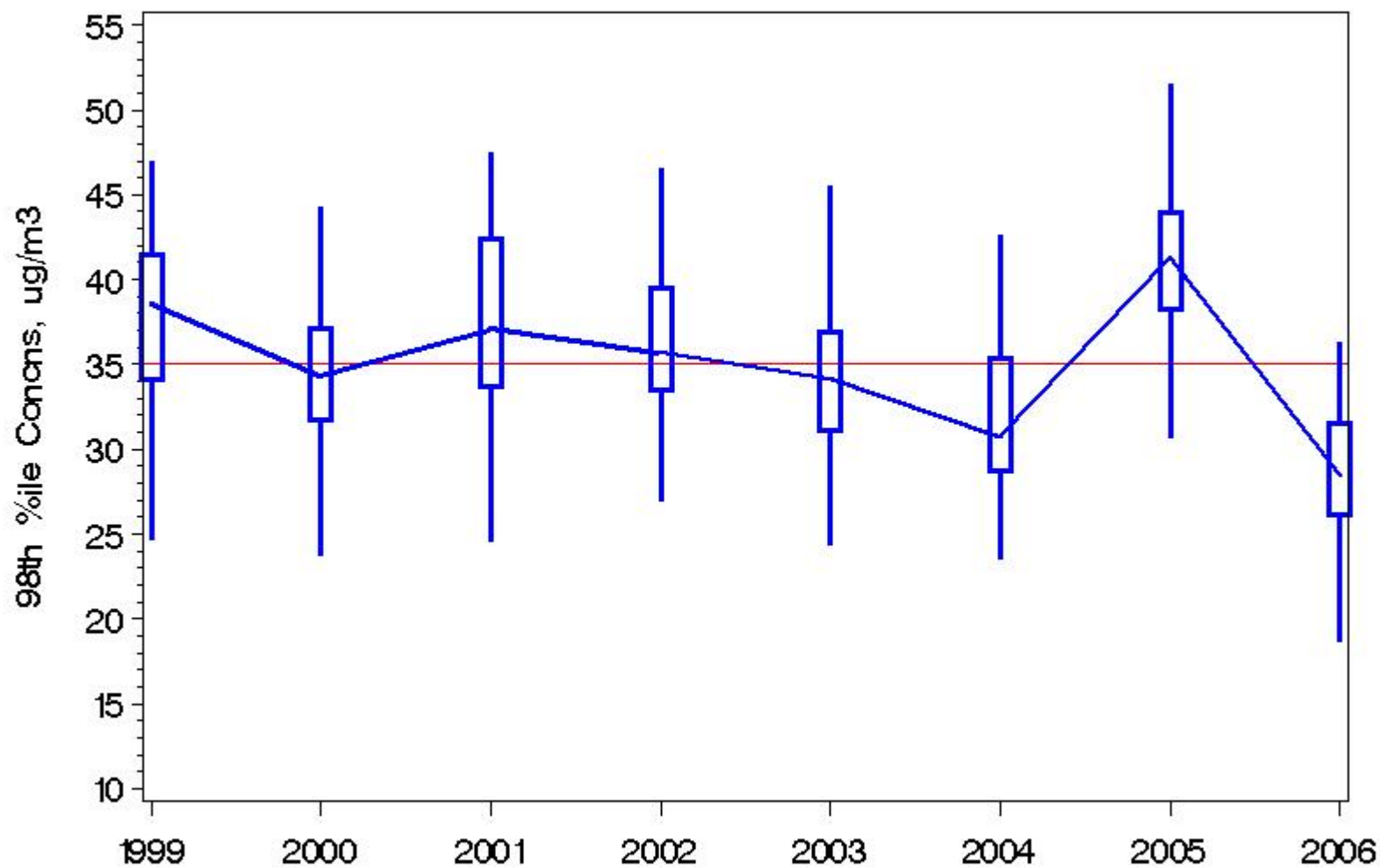
Preliminary data for 2006; trends for monitors with at least 7 years of data

PM2.5 Annual Mean Trends, LADCO States, 1999–2006



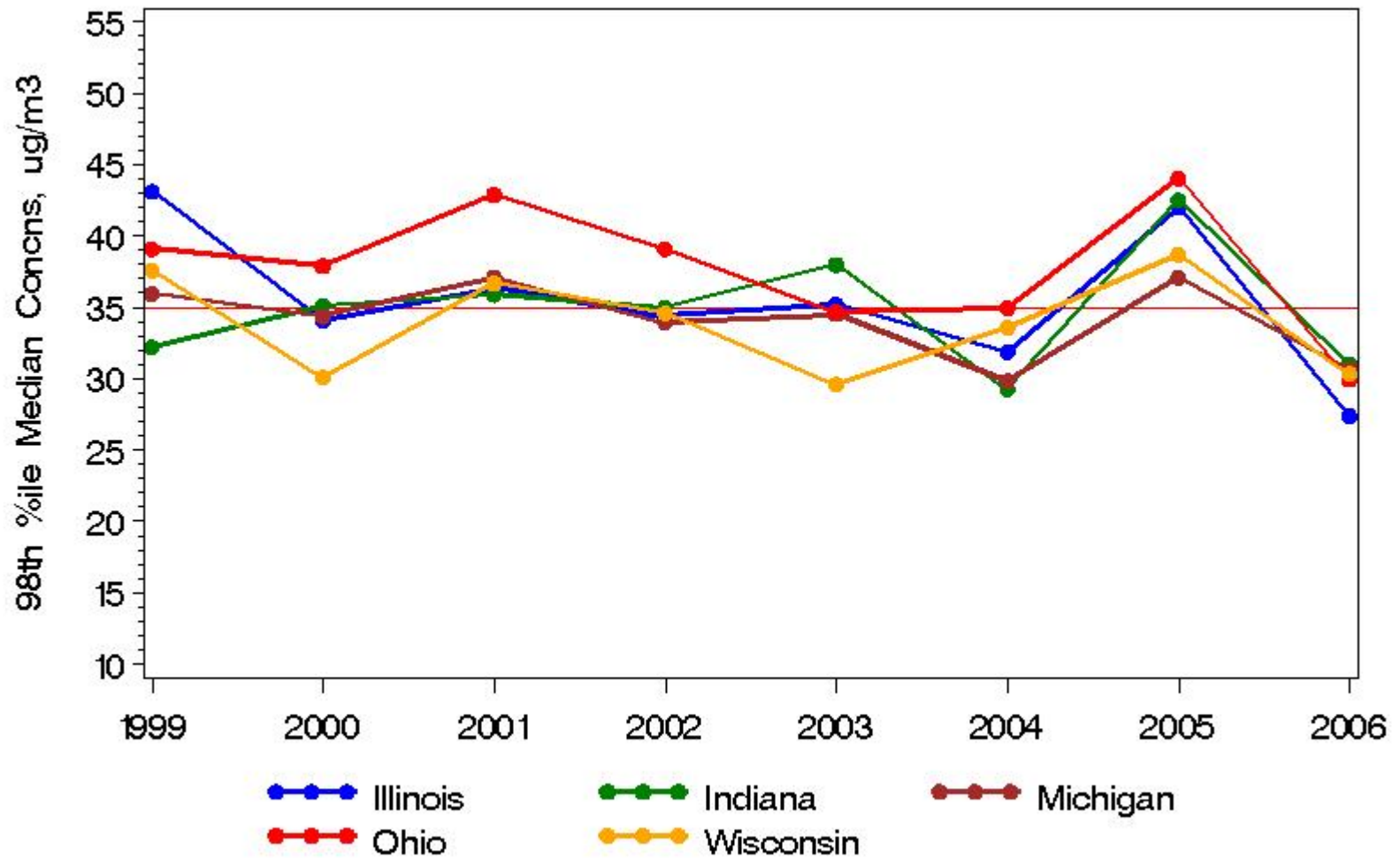
Preliminary data for 2006; trends for monitors with at least 7 years of data

PM2.5 98%ile Trends, Midwest States, 1999–2006



Preliminary data for 2006; trends for monitors with at least 7 years of data

PM2.5 98%ile Trends, LADCO States, 1999–2006



Preliminary data for 2006; trends for monitors with at least 7 years of data