



Air Quality & Transportation Challenges in Southeast Michigan

Midwest Transportation Air Quality Summit
Grafton, IL
October 27, 2009

Joan Weidner
Southeast Michigan Council of Governments

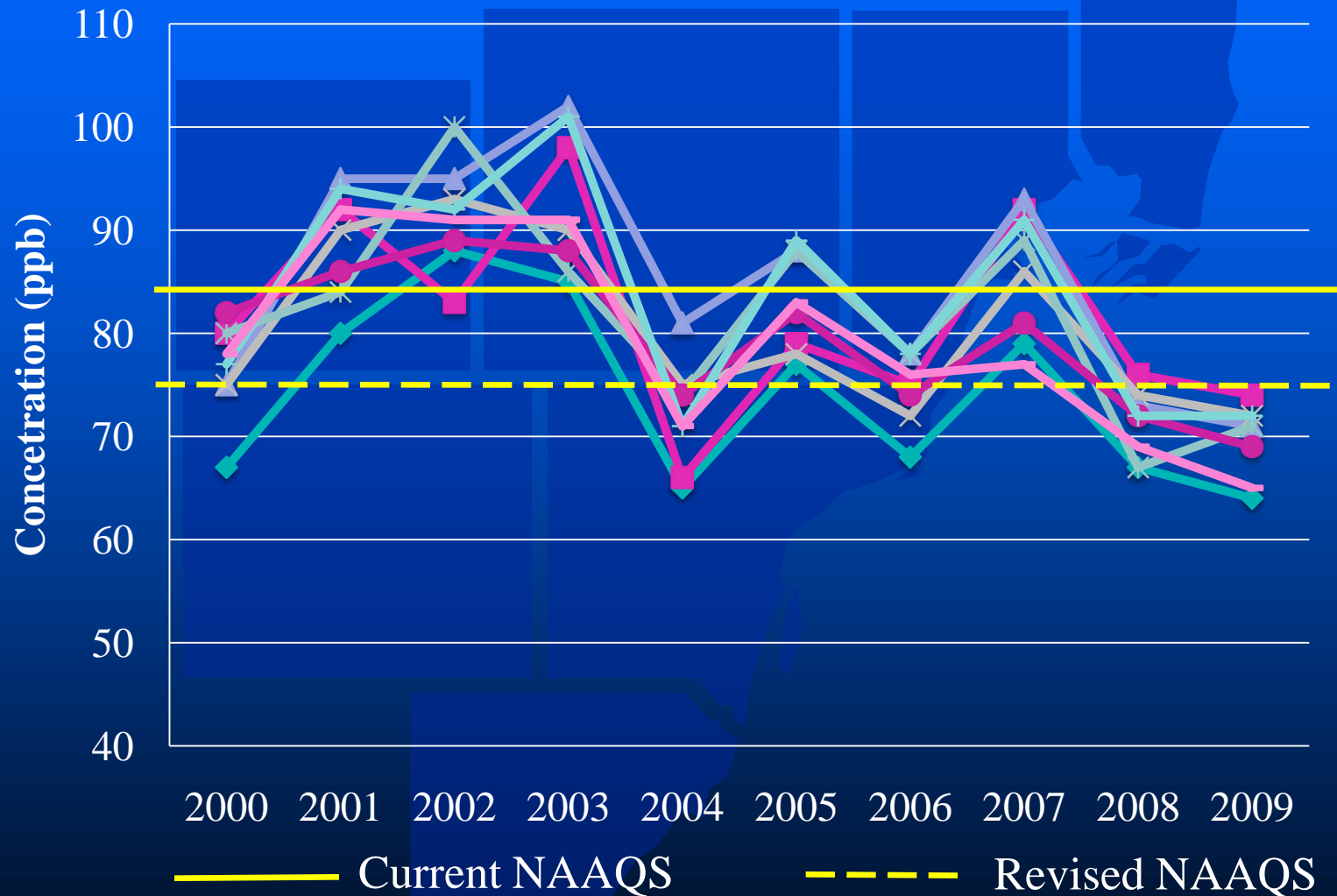
Seven-County SEMCOG Planning Area



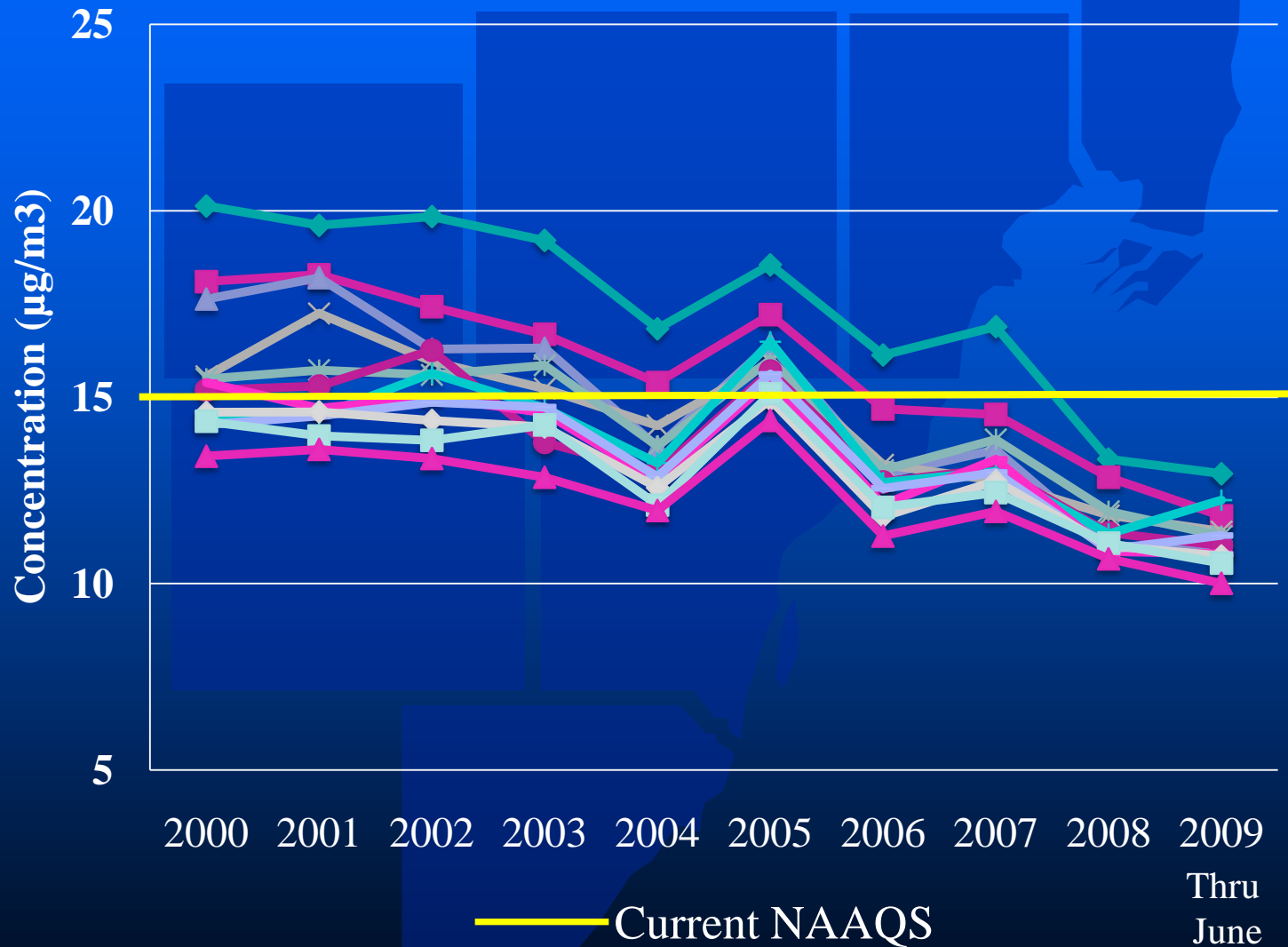


Air Quality Steadily Improving

Southeast Michigan Ozone 4th Highest Concentration



Southeast Michigan Annual PM2.5



Southeast Michigan 98th Percentile 24-Hour PM_{2.5}

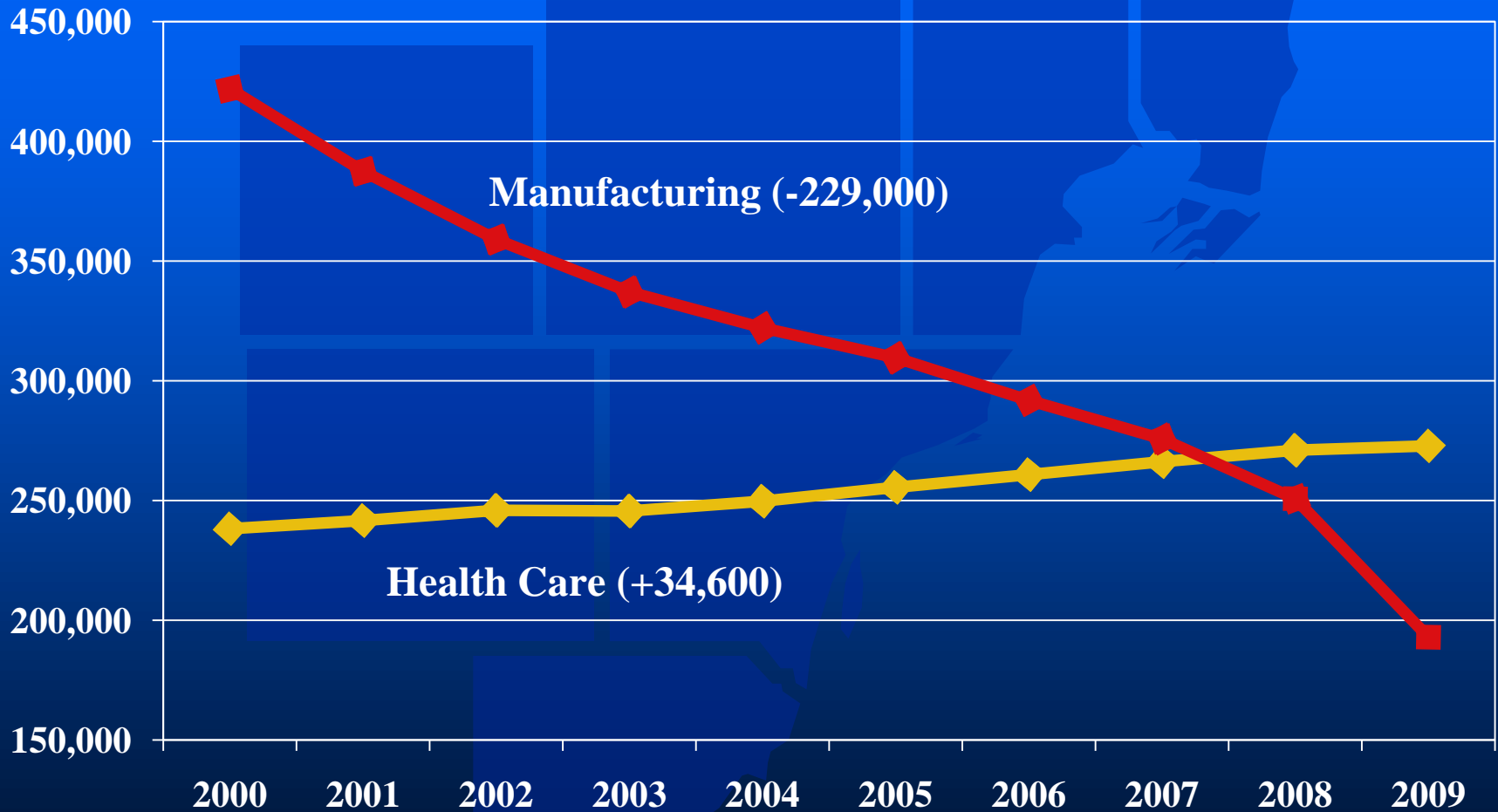




**Economics of region
dramatically changing**

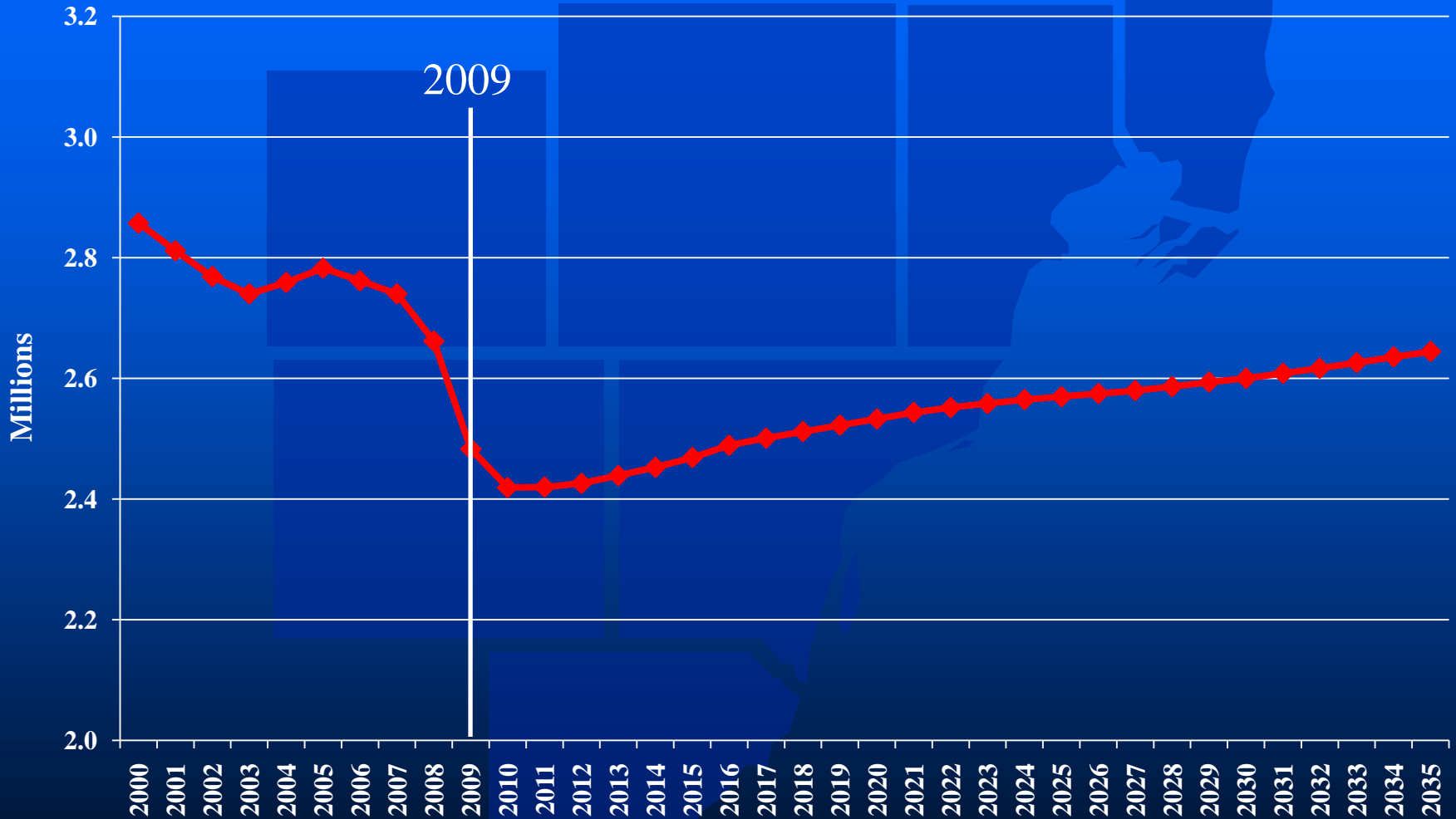
Manufacturing vs. Health Care Jobs

Southeast Michigan, 2000-2009



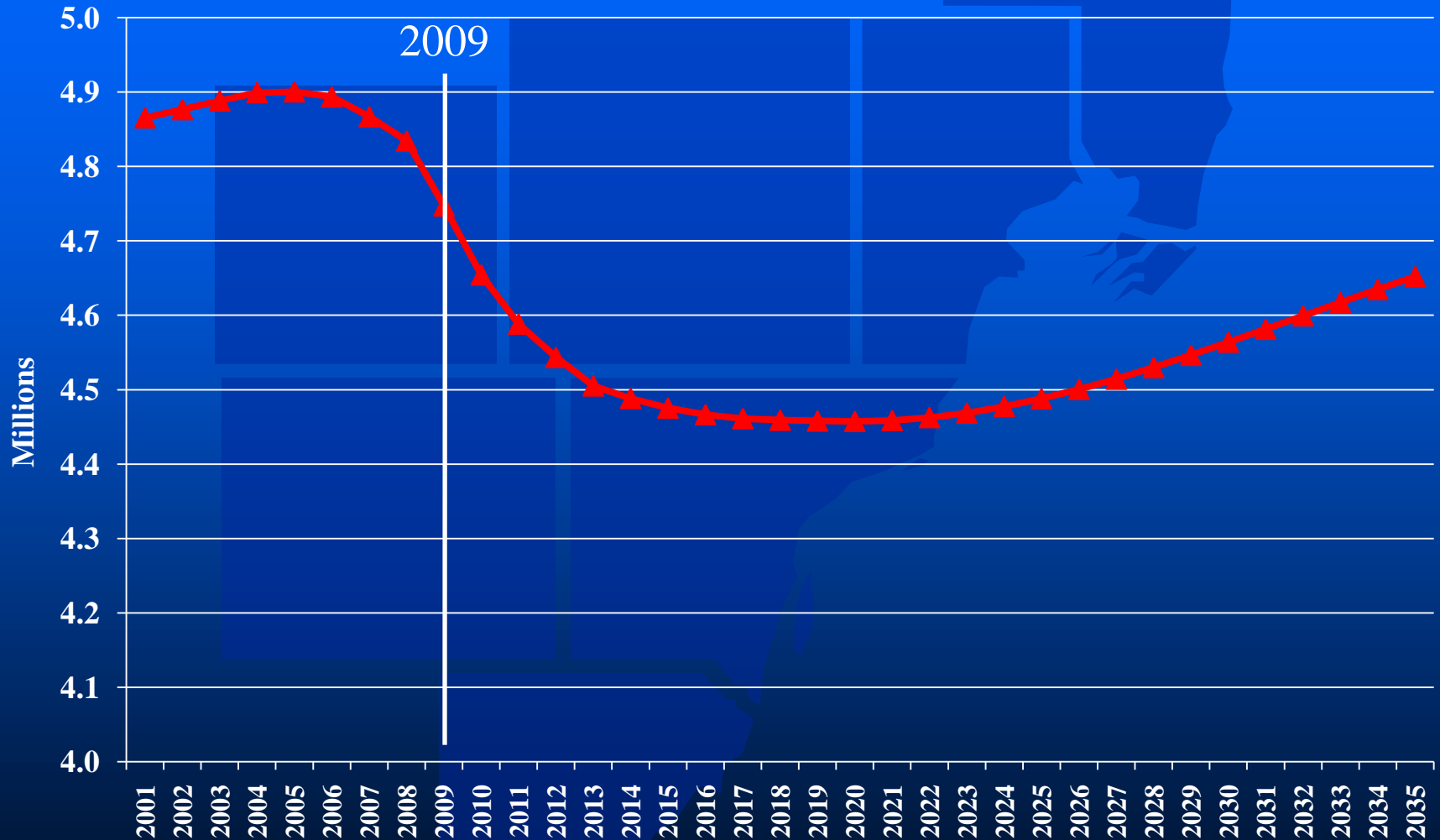
Total Employment*

Southeast Michigan, 2000-2035

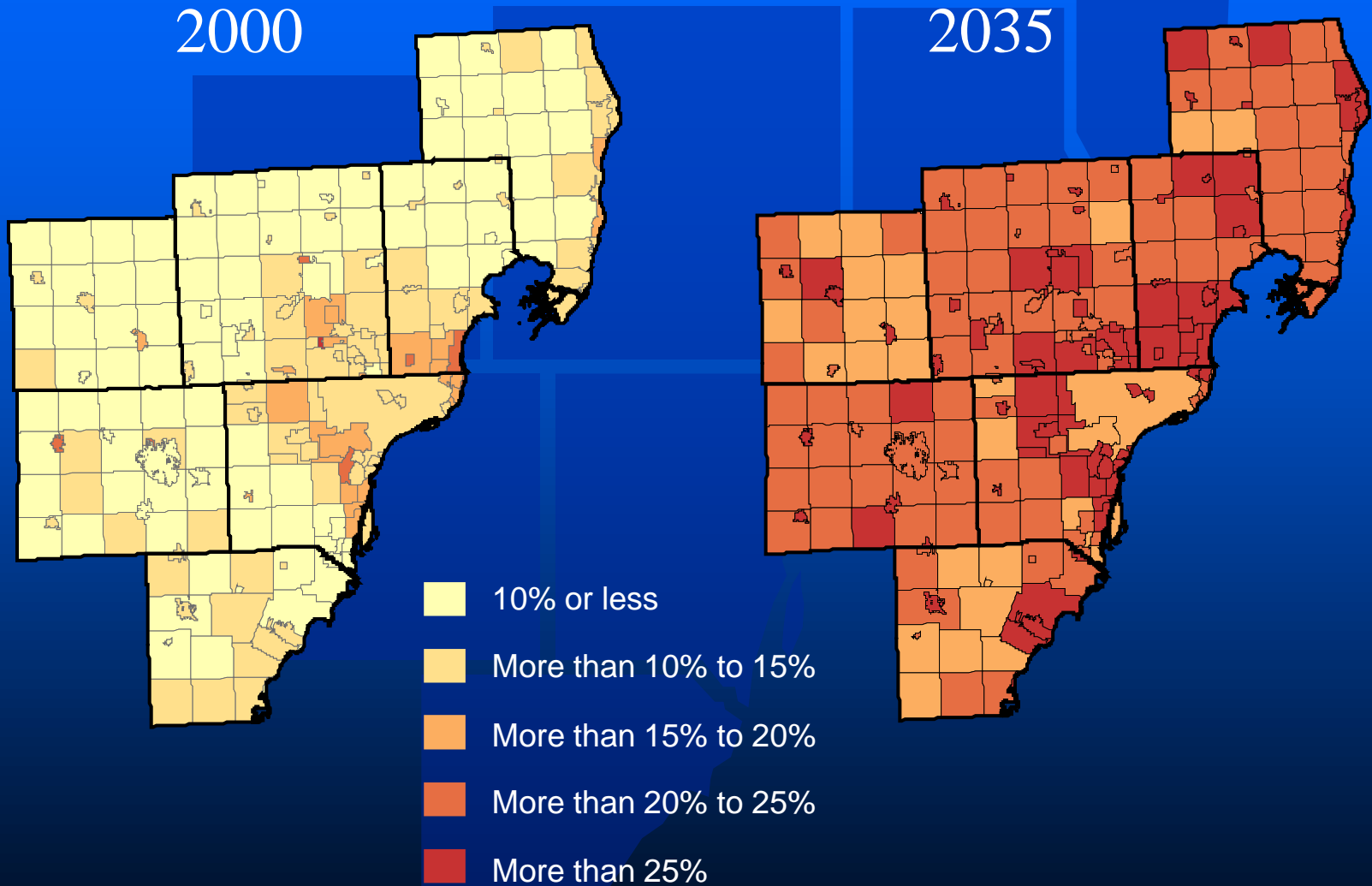


Population Forecast

Southeast Michigan, 2001-2035



Percent Population 65+



Home Price and Taxable Value

Annual Percent Change in SE Michigan



Vehicle Miles of Travel

Southeast Michigan, 2002-2008



Implications

- A smaller region for a long time
- Loss of buying power and revenue base
- Reassessing goals and needs
- Redefining success
 - not focusing on growth but right sizing
 - wise investment in infrastructure
 - building desirable communities
 - improving quality of life

Transportation & Air Quality Challenges

- Understand impact of economic changes
 - On NAAQS compliance
 - On transportation needs & priorities
- Balance/integrate regional goals
 - Stemming economic decline
 - Maintaining infrastructure
 - Maintaining/improving air quality
 - Addressing climate change
 - Creating a livable, sustainable region

Federal Policy Conflicts

- Single pollutant NAAQS approach
- Reduced flexibility
- Focused on controlling growth not stemming decline
- Unfunded mandates
- Mixed messages
(e.g. increase fuel economy, decrease VMT)

Moving Forward



- Region is changing dramatically
- We have to change with it
- New goals
- New approaches
- On our own

A stylized map of Michigan in shades of blue, with county boundaries indicated by thin white lines. The map is centered in the background.

SEMCOG

Southeast Michigan Council of Governments