

Current Air Quality and Transportation Issues The St. Louis Perspective

Midwest Transportation Air Quality
Summit

October 27, 2009



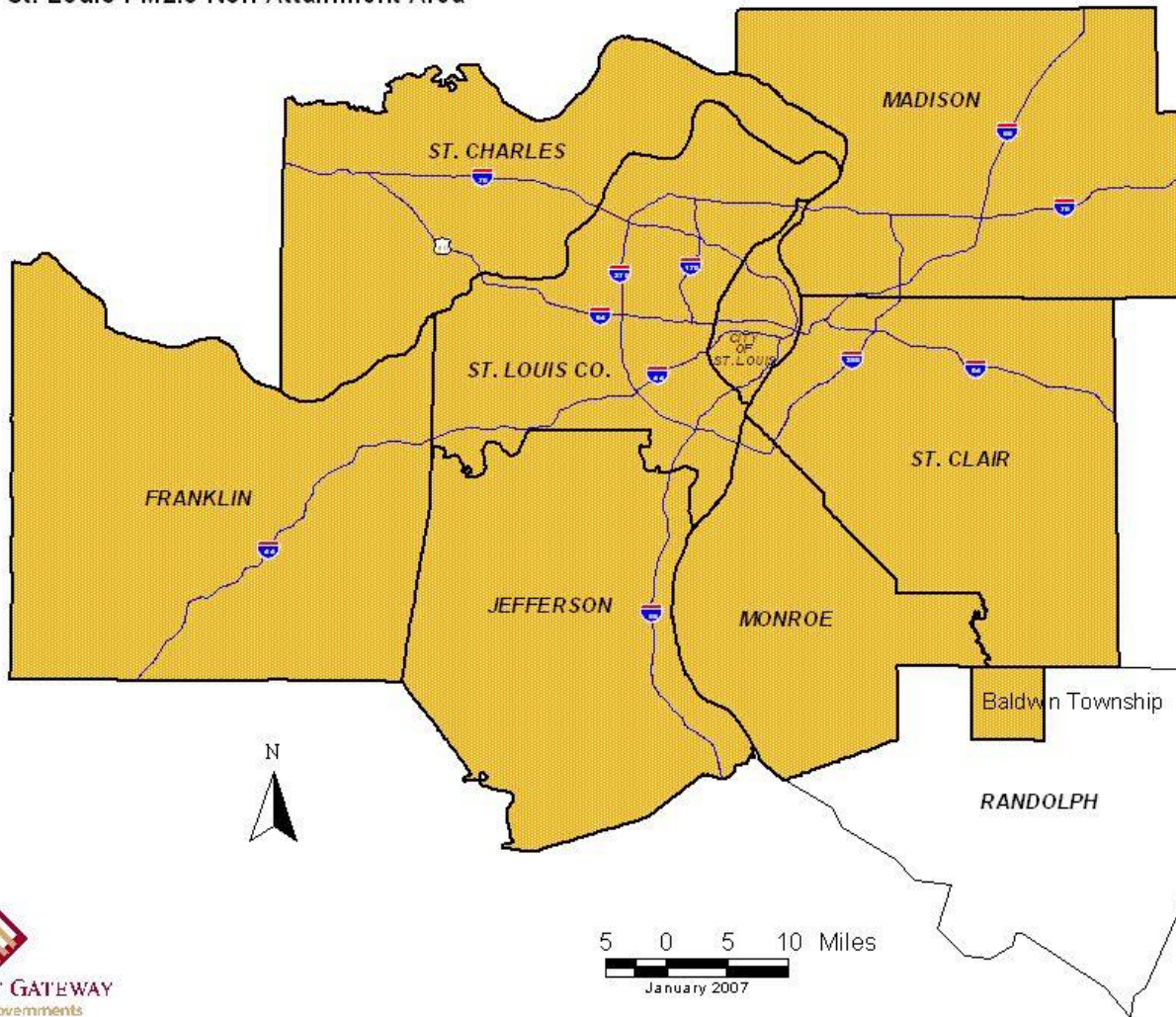
EAST-WEST GATEWAY
Council of Governments

Creating Solutions Across Jurisdictional Boundaries



Welcome to Pere Marquette State Park
Part of the St. Louis 8-Hour Ozone
Non-Attainment Area

Figure 2
St. Louis PM2.5 Non-Attainment Area



Background

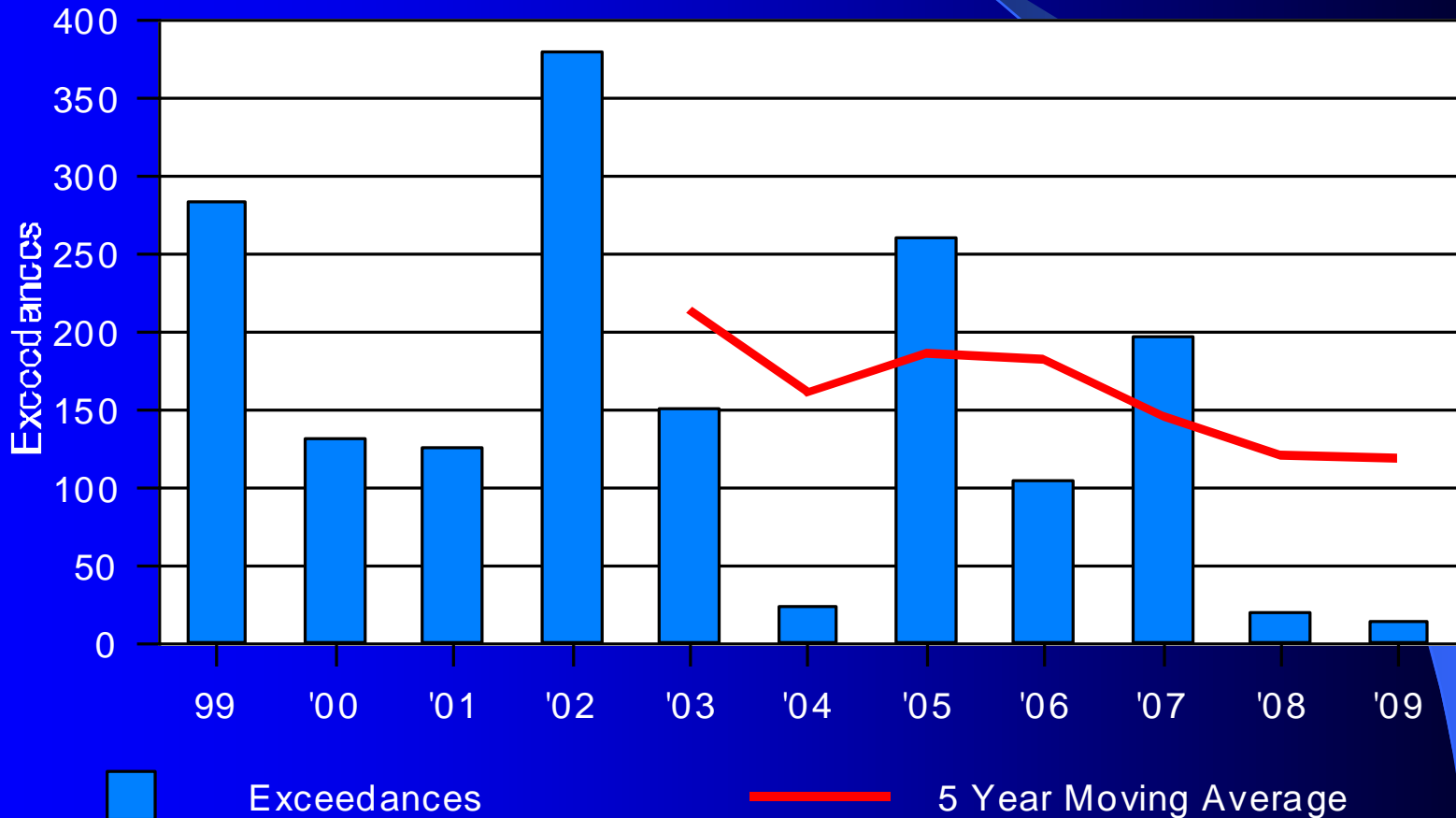
- East-West Gateway Council of Governments is the MPO for St. Louis (MO-IL) Metropolitan Region
 - 3 Counties in Illinois
 - 4 Counties and the City of St. Louis in Missouri
- 2 Federal Regions



Gateway's Air Quality Planning Activities

- Facilitate SIP process for ozone and PM_{2.5}
 - Coordinate the Air Quality Advisory Committee
- Prepare air quality conformity determination
 - Coordinate the Inter Agency Consultation Group
- Ozone data sharing project
- St. Louis Air Quality Management Plan Pilot Project (AQMP3)
- Special projects

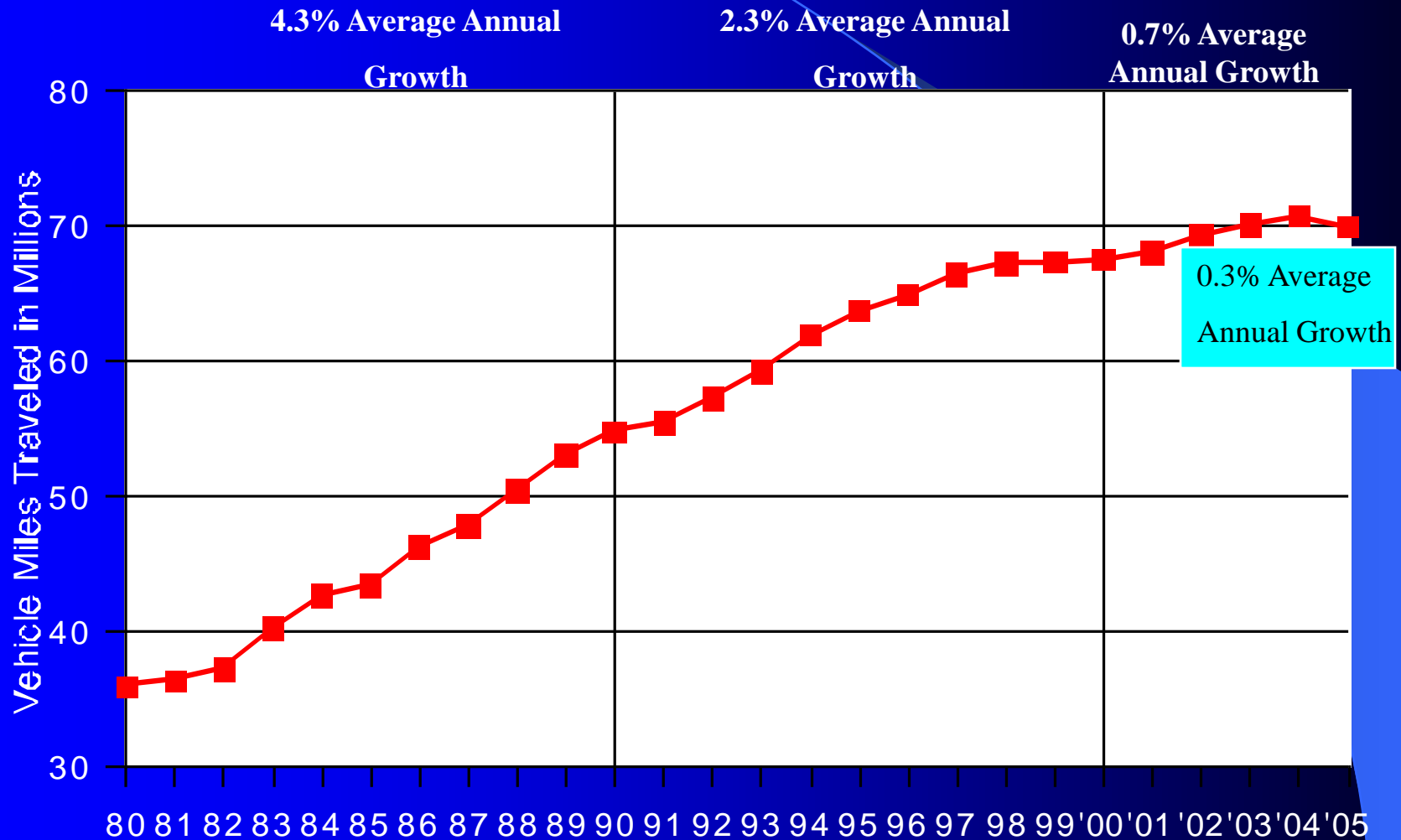
Yearly 8-hour Ozone Exceedances (2008 standard)



Transportation Air Quality Conformity Steps

- Regional Emissions Analysis components
- Mobile 6.2 emissions model
 - Ozone, PM_{2.5} input files
 - Run model
 - Spreadsheets
- Evaluate TIP project applications
 - Identify RSP
 - Identify CMAQ projects
- Identify status of previous CMAQ projects
- Review and update population and employment estimates used in TDM
- Build networks and review TDM components
- Run TDM and prepare VMT estimates by County
- Develop emissions estimates
- Perform Regional Emissions Analysis for Ozone and PM_{2.5}
- TCM completion evaluation
- Conformity Determination and Documentation
 - Overview & 9 Appendices
- 30-day comment period
- Adoption by East-West Gateway Board of Directors

Average Annual Daily Vehicle Miles Traveled East-West Gateway Region



Source - Trends in Regional Traffic Volumes: Signs of Change?, EWGCOG, Feb 2008

VMT Analysis

- Several demographic trends suggest that VMT growth will be slow to flat going forward:
 - Female labor force
 - Working age population
 - Two-parent households with children
 - Auto ownership rates
 - Gasoline prices

Challenges

- VMT holding constant/declining
- Impact on the Highway Trust Fund
- Emphasis GHG/Energy bills on reducing VMT
- Use Conformity process to track GHG emissions
- Tools and resources

For Additional Information

- Michael Coulson, PE
 - Manager, Environmental Services
 - East-West Gateway Council of Government
- On-line Air Quality Resource Center
 - www.ewgateway.org/environmental.aq/aq.htm